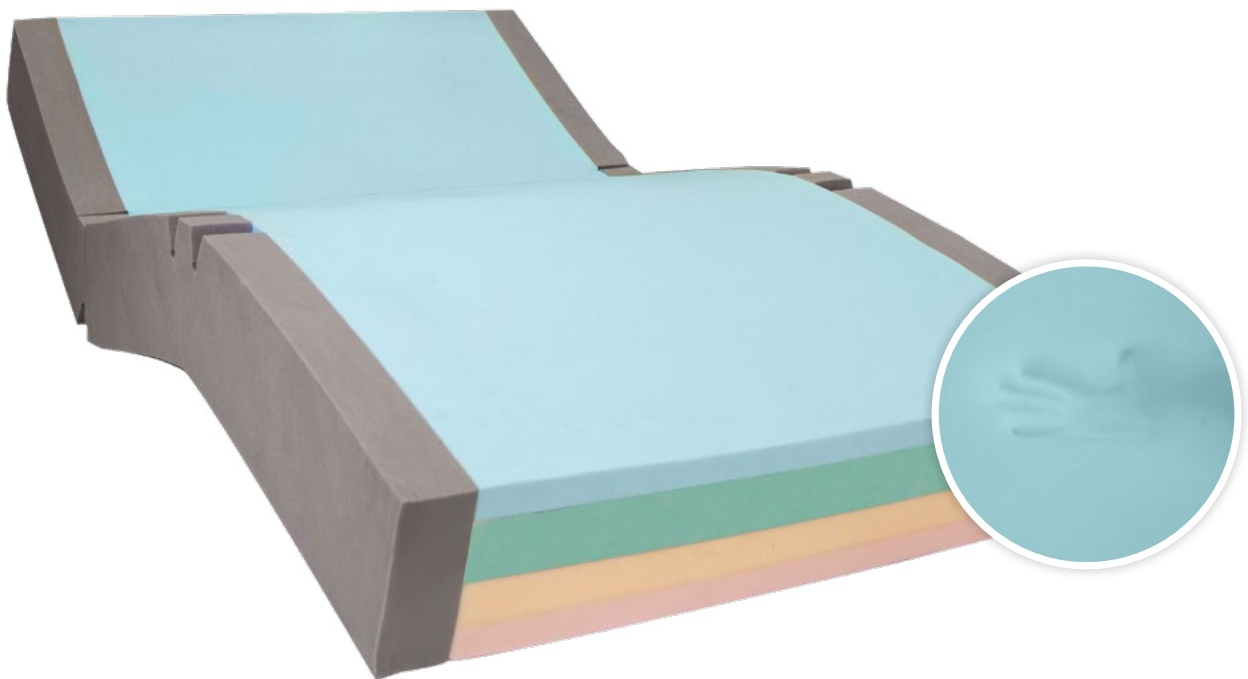


Forté Healthcare



# Icon Maxx IM1000 Bariatric Care, Static Support Surface Range



# Icon Maxx IM1000

Bariatric Care, Static Support Surface Range

EVERY PRODUCT  
CUSTOM MADE

Low - Moderate Risk Bariatric Care: Up to 500kg ESL

The IM1000 Icon Maxx Bariatric support surface range provides care, pressure relief and comfort for bariatric patients weighing up to 500kg. Through the use of proven foam combinations, unique construction methods and high performance cover materials, the Icon Maxx range is the fitting choice for clinicians and facilities looking to achieve comfort, longevity and effective patient care. An extensive variety of configurations are available providing for a wide range of patient needs and requirements including custom sizing for precision fitting to the bed base used within the care setting.



## APPLICATIONS

- ✓ Hospital Ward Usage
- ✓ Aged Care Facilities
- ✓ Home Care

## Icon Maxx 350kg

CODE	SIZE (MM)	
IM1000	1980x1050x180	King Single
IM1004	2030x1050x180	
IM1001	1980x1150x180	Extra-Wide
IM1005	2030x1150x180	
IM1002	1980x1350x180	Double
IM1006	2030x1350x180	
IM1003	1980x1530x180	Queen
IM1007	2030x1530x180	
150-350KG	EFFECTIVE WEIGHT CAPACITY*	
WARRANTY** 5-YEAR FOAM CORE		



### 4-LAYERED GRADED PRESSURE CARE CORE

- ✓ High specification foam for longevity and performance
- ✓ Provides graded postural support and patient comfort
- ✓ Foam conforms to AS/NZS 4088.1 (Int):1993 and FMVSS302 & SAE T2002
- ✓ Anti-microbial treatment applied to foam maximises longevity and core micro-climate
- ✓ Conforms to EPUAP, NPUAP & PPIA Guidelines for quality and comfort



### PREMIUM VISCO-GRADE, UPPER IMMERSION LAYER

- ✓ Visco-elastic cell structure provides low-shear surface, effective immersion and interface pressure relief
- ✓ Provides exceptional comfort
- ✓ Delivers postural support for patient repositioning and transfer



### PREMIUM POSTURAL SUPPORT SECONDARY LAYER

- ✓ Graded support and patient comfort in supine, prone, lateral and fowler positions
- ✓ Excellent core stability to encourage centralised patient positioning to minimise falls risk, entrapment and enhance pressure relief



### LAYERED FIRM BASE

- ✓ Provides protection against 'bottoming-out' during transfer, repositioning and whilst in the inclined/fowler position
- ✓ Graded for ultimate patient support



### TRIPLE SECTION, SPLIT BASE

- ✓ Enhances profiling with adjustable bed surface positions minimising excess strain on bed mechanisms

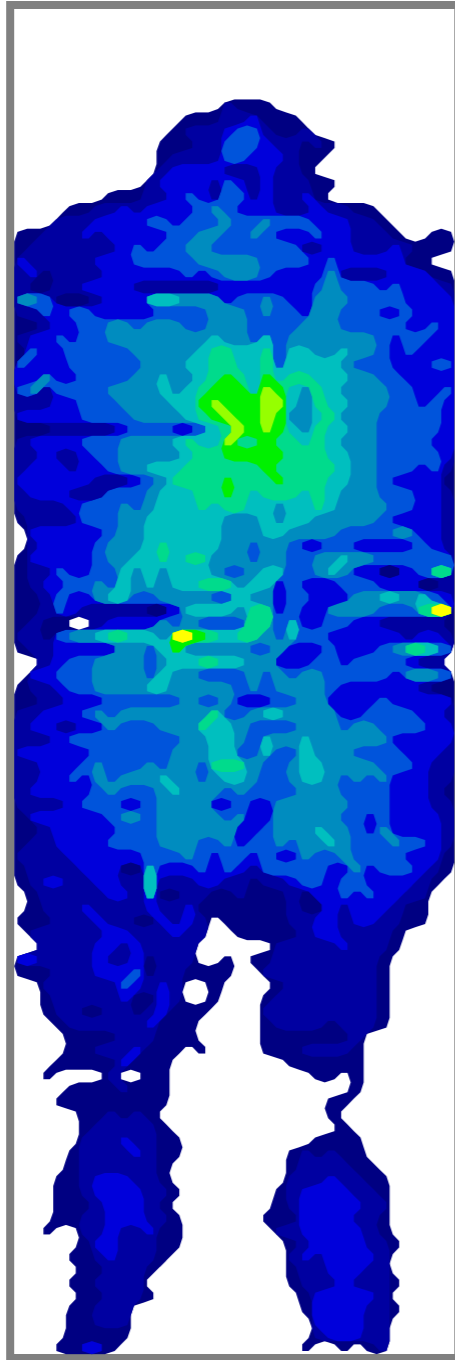


### PROFILE STABILISING SIDES

- ✓ Enables ease of primary patient care
- ✓ Facilitates patient transfers
- ✓ Unique hinge points allow mattress to easily conform to varied bed positions
- ✓ Encourages central patient positioning

# CLINICAL PRESSURE ANALYSIS

## SUPINE POSITION



### NOTES

Subject: 214kg Male  
Height: 176cm

Ambient Temperature: 30°C  
Average Peak Interface Pressure: 39mmHg

Sensor Type: Tekscan BPMS, Type 5400D

Bed: Icare Medical King Single



# Forté Combination Pressure Care Covers

Excellent high quality beds, comfortable medical fabrics

EVERY PRODUCT  
CUSTOM MADE

The Forté Combination Pressure Care Covers are a tried and proven medical grade Pressure Relieving Cover. Utilising premium quality medical grade fabrics, Forté Combination Covers are the standard covering option across much of the Forté Support Surface range. Belgium made polyurethane coated upper and heavy duty PVC Base ensures that Forté Combination Covers deliver consistent care, comfort and durability.



## APPLICATIONS

- ✓ Hospitals
- ✓ Aged Care
- ✓ Home Care

## POLYURETHANE COATED PRESSURE CARE UPPER

- ✓ 4-Way Stretch for shear protection
- ✓ Vapour permeable and breathable
- ✓ Flexible and gentle to the skin
- ✓ Fire retardant, meets BS 6807 ignition source 5 and BS 7175 ignition source 5 standards
- ✓ Anti-microbial protection, resistant to patient body fluids

## HEAVY DUTY PVC BASE

- ✓ Durable
- ✓ Protects foam core against the bed base
- ✓ Provides exceptional conformity and profiling to medical bed surfaces
- ✓ Reduces shearing forces by sliding against bed base as the bed profiles
- ✓ Meets fire retardant specifications: ASTM D6413 PASS, AS1441.13-1973 - PASS, AS1530.3-1999 - 14,0,0,5

WARRANTY\*\* 2-YEAR WARRANTY



## INTEGRATED ZIPPER

- ✓ Allows easy cover removal
- ✓ Robust and durable

## WATERFALL ZIPPER PROTECTION FLAP

- ✓ Protects against fluid ingress at point of zipper
- ✓ Meets infection control guidelines

## CUSTOM DIGITAL INDELIBLE LABELING

- ✓ Includes cleaning and care guidelines
- ✓ Available with printing of choice with options such as ward location, asset number, date of supply, facility/group name
- ✓ Full colour
- ✓ Indelible and non-removable



## HIGH FREQUENCY SEALED AND WELDED SEAMS

- ✓ Electromagnetically fused seams protecting against risk of penetration of fluid
- ✓ Meets and exceeds infection control requirements
- ✓ Reinforced with additional heavy duty stitching at stress points
- ✓ 100% sealed to prevent ingress of fluid or infection

## CLEANING AND CARE

- ✓ 1000ppm disinfection chemical suitability
- ✓ Wipe clean



## OPTIONAL - FULLY SEALED AND ENCLOSED

- ✓ Ultimate core durability and protection, protects foam core against willful damage
- ✓ 100% waterproof seams to prevent ingress of fluid and infection
- ✓ High frequency sealed and welded seams



## PRESSURE CARE FABRIC COLOUR OPTIONS

- ✓ Blue (standard colour)
- ✓ Maroon
- ✓ Green
- ✓ Beige
- ✓ Dark Blue
- ✓ Grey

## INTEGRATED PRESSURE RELIEF SYSTEM

- ✓ Fitted standard to fully sealed and enclosed covers
- ✓ Relieves internal strain on cover seams
- ✓ High frequency welded to cover fabric
- ✓ Positioned unobtrusively for patient comfort



# PU1100 Medical Pressure Care Fabric - Technical Specifications

## Typical Applications

General Medical Mattress Cover  
Aged Cared Mattress Covers  
General Hospital Ward Mattress Covers

## Features & Benefits

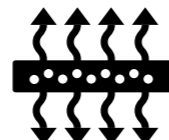
Excellent Stretch	Reduces 'Hammocking' and material tension, Lowers interface pressure
Breathable/Vapour Permeable	Wicks away moisture from patients skin and reduces heat providing for improved skin micro-climate conditions.
Excellent HF Welding Compatibility	Allows covers to be sealed against fluid ingress at seams
Barrier Fabric	Allows care staff to 'Wipe-Clean', prevents ingress of body fluids*
95° High Wash Temperature	Enhances infection control



High durability



Excellent stretch



Breathable/  
vapour permeable



Anti-Microbial  
protection



Barrier Fabric



Excellent HF  
welding capacity



95° High Wash  
Temperature



Fire retardant

Total Weight	175 [+/-10] g/m <sup>2</sup>	ISO 3801/5 1977
Weight of Fabric [PA]	85 [+/-5] g/m <sup>2</sup>	ISO 3801/5 1977
Weight of Coating [PU]	90 [+/-5] g/m <sup>2</sup>	ISO 3801/5 1977
Breaking Strength Warp	300 N/5cm	ISO 13934 1999
Breaking Strength Weft	160 N/5cm	ISO13934 1999
Breaking Extension Warp	90%	ISO13934 1999
Breaking Extension Weft	220%	ISO13934 1999
Tear Strength Warp	35 N	ISO 4674A1 1977
Tear Strength Weft	30 N	ISO 4674A1 1977
Adhesion Warp	18 N/22mm	DIN 53357 1982
Adhesion Weft	20 N/22mm	DIN 53357 1982
Waterproofness before washing	OK: 2000 G M D mm	ISO 811:1981
Waterproofness after washing	OK 2000 G M D mm	ISO 811:1981
Shrinkage After Washing Warp [95°C]	0 [+/-6] %	ISO 5077 1984
Shrinkage After Washing Weft [95°C]	0 [+/-3] %	ISO 5077 1984
Flammability	OK: Crib 5	BS 7175 (1989)
Breathability 37°C / 65% R.H	600 g/m <sup>2</sup> /24h	INVERTED CUP
Mold and fungal resistance	OK:	
Cleaning and care:	Machine washable at 95°C. Do not bleach. Tumble dry low. Do not iron. Dry cleanable.	

# FORTE PREMIFLEX™ PFPU1200 DOUBLE COATED VAPOUR PERMEABLE FABRIC

## Typical Applications

Acute Care & ICU Covers  
 Mattress Base Covers  
 Mental Health Mattress Cover  
 Homecare Mattress Base Covers  
 Aged Care Mattress Base Covers  
 General Hospital Ward Mattress Base Covers  
 Stretcher Mattress Covers

## Features & Benefits

High Durability	Excellent for Mattress Base Covers
High Resistance to Cleaning Agents, 10000ppm Active Chlorine resistance	Provides highest available infection control
Breathable/Vapour Permeable	When used as a base cover, promotes optimal mattress core micro-climate
Excellent HF Welding Compatibility	Allows covers to be sealed against fluid ingress at seams
Barrier Fabric	Allows care staff to 'Wipe-Clean', prevents ingress of body fluids*
95° High Wash Temperature	Meets hospital and medical facility requirements



High durability



Fire retardant



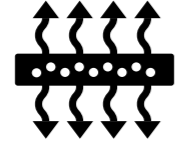
Excellent HF welding capacity



Anti-Microbial protection



Barrier Fabric



Breathable/vapour permeable



95° High Wash Temperature



Resistance to cleaning agents

Feature/Characteristic	Result	Test Method
Description	Weft knitted polyamide with a PU Transfer coating	N/A
Composition	Polyamide / Polyurethane	N/A
Weight	310 g/m <sup>2</sup> (+/-20) g/m <sup>2</sup>	ISO3801/5: 1977
Width	2100-2150mm	
Breaking Strength Warp	1000 N/5cm	ISO13934: 1999
Breaking Strength Weft	350 N/5cm	ISO13934: 1999
Breaking Extension Warp	90%	ISO13934: 1999
Breaking Extension Weft	Weft: 300%	ISO13934: 1999
Tear Strength Warp	80N	ISO 4674A1 1977
Tear Strength Weft	80N	ISO 4674A1 1977
Adhesion Warp	15 N/22mm	DIN 53357 1982
Adhesion Weft	15 N/22mm	DIN 53357 1982
Waterproofness before washing	OK: 2000 G M D mm	ISO 811:1981
Waterproofness after washing	OK 2000 G M D	ISO 811:1981
Water Vapour Permeability	500 g/m <sup>2</sup> /24H 37°C/65% R.H	Inverted Cup
Shrinkage After Washing Warp	0 [+/-5] %	ISO 5077 1984
Shrinkage After Washing Weft	0 [+/-2] %	ISO 5077 1984
Flammability	OK: Crib 5	BS 7175 (1989)
Maximum Wash Temperature	95°C	N/A
Cleaning and care:	Wipe with mild detergent. Wash or dry-clean using detergent up to 75°C. For disinfection use sodium hypo-chlorite at no more than 10,000 parts per million of active chlorine. Do not use biological or phenol-based cleaners. Wash and dry completely before storage. Some surface wrinkling may occur.	

# MEDICAL MATTRESS EXPERTS



P. 1300 73 11 63  
W. [Fortéhealthcare.com.au](http://Fortéhealthcare.com.au)  
E. [sales@Fortéhealthcare.com.au](mailto:sales@Fortéhealthcare.com.au)