



**forté**  
HEALTHCARE

# AIRMONTE ALTERNATING AIR SYSTEMS

AIRMONTE A8 | AIRMONTE A5

# AIRMONTE A8

Full Replacement Alternating Air System



## SPECIFICATIONS

Code	Size	Dimensions (L x W x D mm)	COVER
<b>A8000</b>	Single	1980x870x200	Standard
<b>A8000AC</b>			Advantiflex Classic (Upgrade)
<b>A8SL000</b>	Single, Long	2030x880x215	Advantiflex Classic
<b>A8KS1000</b>	King Single	1980x1050x215	AdvantiflexClassic
<b>A8KSL1000</b>	King Single, Long	2030x1050x215	AdvantiflexClassic
<b>A8EW1000</b>	Extra-Wide	1980x1150x215	AdvantiflexClassic
<b>A8EWL1000</b>	Extra-Wide, Long	2030x1150x215	AdvantiflexClassic
<b>A8D1000</b>	Double	1980x1350x215	AdvantiflexClassic
<b>A8DL1000</b>	Double, Long	2030x1350x215	AdvantiflexClassic
<b>A8Q1000</b>	Queen	1980x1530x215	AdvantiflexClassic
<b>A8QL1000</b>	Queen, Long	2030x1530x215	AdvantiflexClassic
<b>A8K1000</b>	King	1980x1850x215	AdvantiflexClassic
<b>A8KL1000</b>	King, Long	2030x1850x215	AdvantiflexClassic
		Customisable	Can be Made to suit Any Bed
		THERAPEUTIC WEIGHT RANGE*	30-200KG

APPLICATIONS

AGED CARE, HOME CARE

### Warranty

Foam: 5 Years  
 Cover: 12 Months (Standard)  
 Cover: 2 Years (Advantiflex Classic)  
 Air System & Pump: 12 Months



## SUPPORT FOR CARERS

The Airmonte A8 Mattress Range embodies elevated levels in powered patient pressure care. Used and trusted in care facilities across Australia, the Airmonte provides a high standard and consistency of care, with a flawless, easy to operate advanced design at excellent value. Key clinical requirements including adjustable cell pressure, alternating/static modes, adjustable comfort level, low air loss, quick-release CPR valves, quality componentry, effortless operation and easy maintenance ensures effectiveness and comfort for patients and support for carers. Select the Airmonte Pressure Care Mattresses and achieve unsurpassed reliability and exceptional care.

# AIRMONTE A8

Full Replacement Alternating Air System



## FEATURES

### QUALITY, ERGONOMIC PUMP UNIT

- » Styling is compact and efficient, ergonomically designed with an easy to operate panel
- » Quality componentry
- » Very quiet pump operation.

### PUMP CONTROL PANEL FUNCTIONS

- » Cell pressure auto-adjusts to exactly suit patient, providing specialised pressure care
- » Cycle time variable – 10, 15, 20, 25 minutes
- » Comfort level adjustable and auto-firm inflation
- » Alternating/static option
- » Auto-adjust seat function for stability when patients are sitting or changing
- » Automatically controls mattress low air-loss feature, removing internal heat entrapment and patient perspiration
- » Low pressure indication & power failure alert
- » Panel lock facility.



## FEATURES

### ALTERNATING CELL CONSTRUCTION

- » 17 interchangeable alternating cells providing excellent pressure re-distribution
- » Patient is supported constantly, simultaneously allowing oxygen flow to all critical areas, preventing and/or healing pressure sores
- » Height of mattress (20.3cm) allows maximum patient immersion for effectiveness and comfort
- » Strengthened flexible TPU construction maintains mattress integrity for longevity and consistency of patient care
- » Light overall weight (9kg) allows ease of set-up and transportation.

### VENTILATED CELLS

- » 6 ventilated cells in center region optimize micro-climate conditions at the patient interface, reducing excessive heat and moisture.

### FIRM FOUNDATION LAYER & SIDE FOAM

- » To extend the alternating air system to a width & length greater than the standard single, we encase the air system in a firm foam foundation and sides.
- » Provides protection to air system from bed base
- » Enhances overall mattress stability
- » Provides patient protection should a prolonged power outage occur

### POWER CORD SAFETY RETENTION SYSTEM

- » Integrated loops enable the power cord to be fastened to the side of the mattress
- » Prevents trip hazards and power cord entrapment by adjustable bed surface
- » Press-stud closure allows easy fitment.

### 360° INTEGRATED ZIPPER

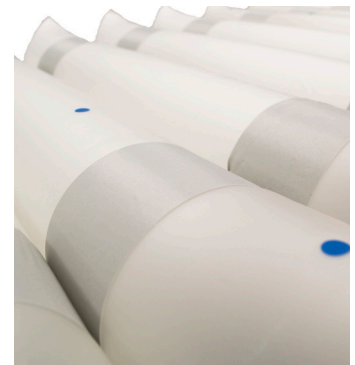
- » Allows full removal of upper cover Facilitates washing/laundrying.

### MODULAR DESIGN

- » Every component is modular and replaceable for low ongoing operational costs
- » 360° Access Zipper for ease of maintenance.

### EASY TO ACCESS CPR

- » Positioned on air supply tubes
- » Access is not impeded by bed linen or side rails.

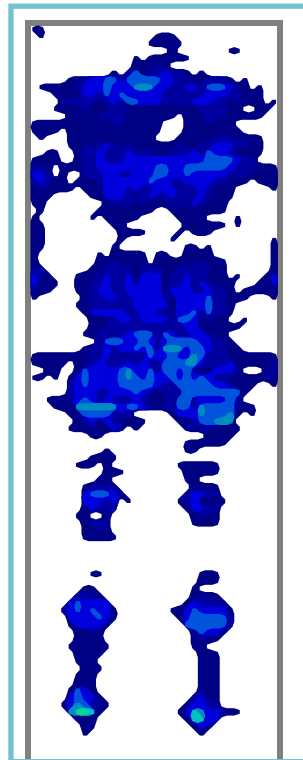


# AIRMONTE A8

Full Replacement Alternating Air System

## PRESSURE MAPPING

SUPINE



Tekscan Pressure Measurement System 7.20C SENSOR  
TYPE 5400D  
ROWS 104  
COLS 34  
SENSEL\_AREA 2.89008 cm2  
SECONDS\_PER\_FRAME 0.010319  
MICRO\_SECONDS 0  
UNITS mmHg

### NOTES

#### PRESSURE MAPPING PARAMETERS

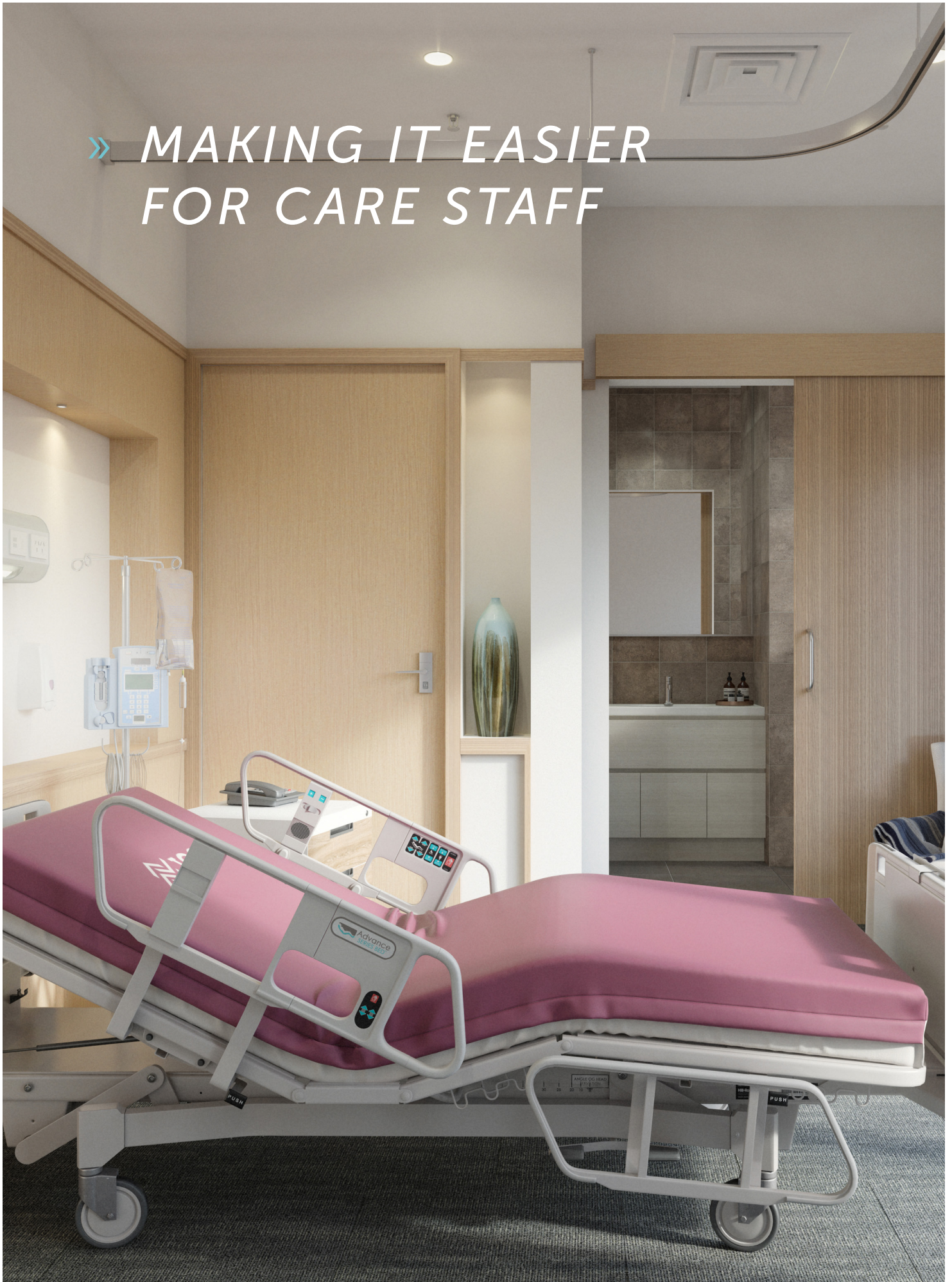
**Bed Surface:** Alrick, 5 Function Electric Hospital/Homecare Bed

**Ambient Temperature:** 21°C

**Duration:** Pressure Mapping was captured after 6 hours of subject laying upon support surface

**Subject:** 98kg, Male, Height: 188cm

» *MAKING IT EASIER  
FOR CARE STAFF*



# AIRMONTE A5

Alternating Air Overlay



## SPECIFICATIONS

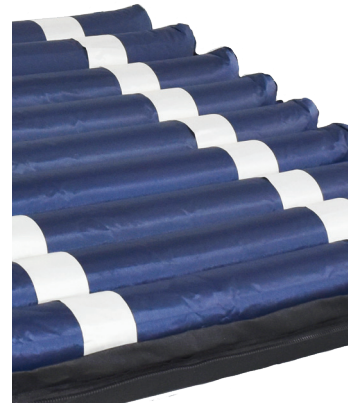
Code	Size	Dimensions (L x W x D mm)	COVER
<b>A5000</b>	Single	1960x860x125	Standard
<b>A5000AC</b>			Advantiflex Classic (Upgrade)
		Customisable	Can be Made to suit Any Bed
THERAPEUTIC WEIGHT RANGE*		30-150KG	
APPLICATIONS		AGED CARE, HOME CARE	
<b>Warranty</b>		Cover: 12 Months (Standard) Cover: 2 Years (Advantiflex Classic) Air System & Pump: 12 Months	



## FEATURES

### ALTERNATING CELL CONSTRUCTION

- » 24 Interchangeable alternating cells providing excellent pressure re-distribution
- » Patient is supported constantly, simultaneously allowing oxygen flow to all critical areas, preventing and/or healing pressure sores
- » Height of mattress (125mm) allows maximum patient immersion for effectiveness and comfort
- » Strengthened flexible nylon/TPU construction maintains mattress integrity for longevity and consistency of patient care
- » Light overall weight (7kg) allows ease of set-up and transportation



### 360° INTEGRATED ZIPPER

- » Allows full removal of upper cover
- » Facilitates washing / laundering.



### COMPATIBLE WITH CPR FUNCTION

- » Custom made to provide access to the CPR function  
Note - the access style differs by air mattress brand
- » Cover print ensures visibility for training and in-service purposes.



### AIR SUPPLY PROTECTION SHEATH

- » Protects against fluid ingress into the cover
- » Easy to clean and manage infection control risks.

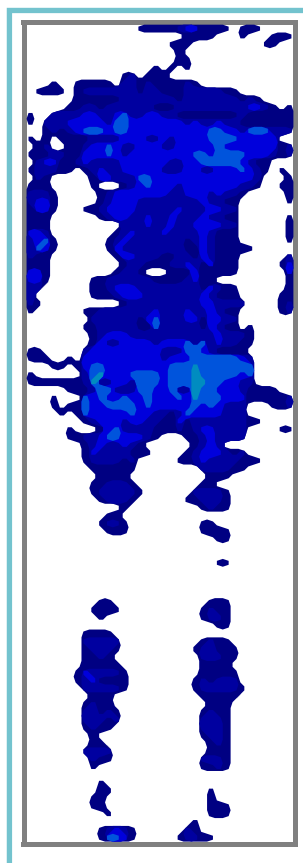


# AIRMONTE A5

Alternating Air Overlay

## PRESSURE MAPPING

SUPINE



Tekscan Pressure Measurement System 7.20C SENSOR  
TYPE 5400D  
ROWS 104  
COLS 34  
SENSEL\_AREA 2.89008 cm<sup>2</sup>  
SECONDS\_PER\_FRAME 0.010319  
MICRO\_SECOND 0  
UNITS mmHg

### NOTES

#### PRESSURE MAPPING PARAMETERS

**Bed Surface:** Alrick, 5 Function Electric Hospital/Homecare Bed

**Ambient Temperature:** 21°C

**Duration:** Pressure Mapping was captured after 6 hours of subject laying upon support surface

**Subject:** 98kg, Male, Height: 188cm



# PRESSURE RELIEVING AIR

The Airmonte A5 is an intuitive, advanced alternating air overlay. Trusted within facilities across Australia, the Airmonte A5 delivers a high standard and consistency of care, with a flawless, easy to operate advanced design at excellent value. The Airmonte A5 is fitted with key clinical requirements such as adjustable cell pressure, alternating/static modes, quick-

release CPR valve and quality componentry, ensuring effectiveness and comfort for patients, and support for carers. Select the Airmonte alternating air mattress systems and achieve unsurpassed reliability and exceptional care.

# STANDARD COVER

---



## Cover: Basic Pressure Care Cover

- 4-Way Stretcher Upper Material
- Nylon Base Material
- Moisture vapour permeable
- 360° Zipper
- Easy Access to CPR
- Power cord safety retention system

# UPGRADE COVER - ADVANTIFLEX CLASSIC

---

Advantiflex covers are a tried and proven medical grade pressure care cover range suited for use in all healthcare settings. Utilising raw materials unique to Forté Healthcare produced in Belgium, the Advantiflex range offers excellent value, compliance, infection control, performance, and patient care. Pressure injury prevention is delivered through bi-directional stretch qualities and moisture vapour permeability. Standard features include High frequency sealed and welded seams, soft-touch polyurethane upper and heavy duty PVC base and the option of an integrated zipper or fully sealed and enclosed.





#### **ADVANTIFLEX PU1100 POLYURETHANE PRESSURE CARE UPPER MATERIAL**

- ✓ High Performance, Single Sided Polyurethane
- ✓ 4-Way/Bi-Directional stretch for shear protection, immersion & envelopment
- ✓ Vapour permeable and breathable
- ✓ Resistant to patient body fluids
- ✓ Flexible and gentle to the skin
- ✓ Standard Colour: Blue

#### **HEAVY DUTY PVC1100 BASE MATERIAL**

- ✓ 100% Waterproof
- ✓ Heavy Duty, Robust & Hardwearing
- ✓ Protects foam core against the bed base
- ✓ Provides exceptional conformity and profiling to medical bed surfaces
- ✓ Reduces shearing forces by sliding against bed base as the bed base profiles
- ✓ Superior resistance to cleaning agents
- ✓ Standard Colour: Grey



#### **CLEANING AND CARE**

- ✓ 1,000ppm disinfection chemical suitability
- ✓ Wipe clean
- ✓ Stain Resistant
- ✓ Anti-microbial protected

#### **COMPLIANCE**

- ✓ Fire retardant, meets BS 6807 ignition source 5 and BS 7175 ignition source 5 standards
- ✓ Anti-microbial protected
- ✓ All seams high frequency welded, no exposed sewn seams
- ✓ Meets and Exceeds Facility Requirement
- ✓ Materials manufactured in Belgium, to Forté specification



#### **CONSTRUCTION**

- ✓ All seams high frequency sealed & welded
- ✓ 360° / four-sided integrated zipper
- ✓ Waterfall Fluid Penetration Flap
- ✓ TGA Compliant Product Labelling
- ✓ Access to CPR Release and Air Pump



#### **INTEGRATED ZIPPER**

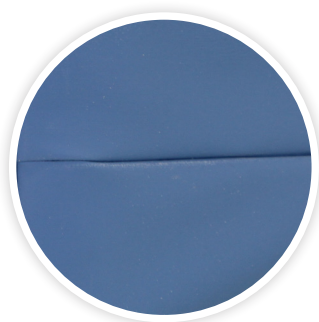
- ✓ 360° / Four-Sided Zipper
- ✓ Allows full removal of upper cover for easy maintenance, and to facilitate washing/laundry
- ✓ Robust and durable
- ✓ High frequency welded attachment for optimal protection against fluid ingress

#### **WATERFALL ZIPPER PROTECTION FLAP**

- ✓ Provides additional protection against fluid ingress through zipper
- ✓ Meets infection control guidelines

#### **HIGH FREQUENCY SEALED AND WELDED SEAMS**

- ✓ Electromagnetically fused seams protecting against risk of penetration of fluid
- ✓ Meets and exceeds infection control requirements
- ✓ Reinforced with additional heavy duty stitching at stress points
- ✓ 100% Sealed to prevent ingress of fluid or infection





1300 73 11 63

[fortehealthcare.com.au](http://fortehealthcare.com.au)

[sales@fortehealthcare.com.au](mailto:sales@fortehealthcare.com.au)

© Copyright 2021 Forté Healthcare