

MEDICAL MATTRESS EXPERTS



The Icon Medium Risk Pressure Care Mattress Range provides true leadership in static pressure care in a preventative setting. Tried and trusted in facilities nation-wide, the Icon range combines outstanding durability, a high standard and consistency of care and excellent value. An extensive variety of configurations are available providing for a wide range of patient needs and requirements.



# Icon Medical Mattress Characteristics

---



**EXCELLENT  
IMMERSION**



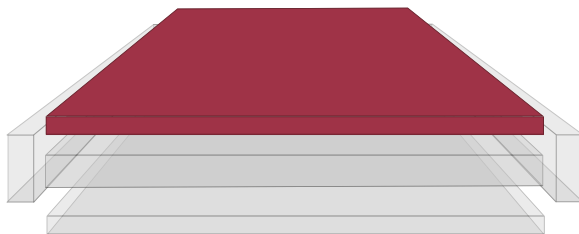
**ANATOMICAL  
SUPPORT**



**FIRM  
FOUNDATION**



**FALLS  
PROTECTION**



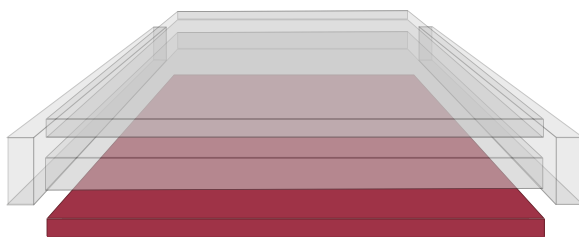
## **AIROFORM IMMERSION INTERFACE**

- ✓ Envelops 'bony prominences'
- ✓ Increases contact between surface and patient, dispersing and equalizing contact pressure
- ✓ Provides excellent conformity to individual patient body profiles



## **ANATOMICAL SUPPORT REGION**

- ✓ Provides additional immersion and envelopment
- ✓ Provides postural support for patient comfort
- ✓ Resilient to optimize function, mobility and repositioning



## **FIRM FOUNDATION AND BASE SUPPORT REGION**

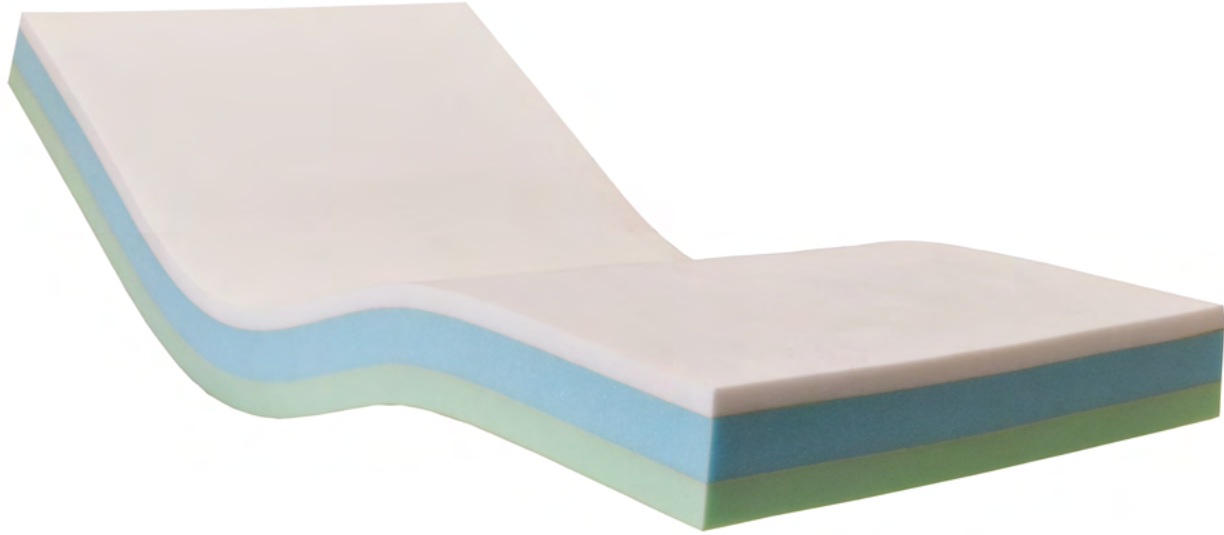
- ✓ Protects patient from 'bottoming-out' whilst in seated/semi-fowler/fowler position
- ✓ Provides enhanced support for repositioning and transfer
- ✓ Assists in primary care



## **INTEGRATED STRENGTHENED SIDES**

- ✓ Provide lateral stability and reduce falls risk
- ✓ Support patient transfer and ingress/egress
- ✓ Assist primary care, provides caregivers a firm edge for support for repositioning
- ✓ Protects patient from edge of bed surface

# Icon I2 Triple Layer Medium Risk Pressure Care Mattress



**SHEAR & FRICTION:**



**REPOSITIONING:**



**INFECTION CONTROL:**



**FIRMNESS:**



**MOISTURE & MICROCLIMATE:**



**PERFORMANCE & LONGEVITY:**



**MOBILITY & FUNCTION:**



**PRESSURE CARE RATING:**

**LOW-MEDIUM RISK**

## / Icon I2

CODE	DIMENSIONS (MM)	SIZE
I2S1000	1980x880x150	Single
I2SL1000	2030x880x150	Single, Long
I2KS1000	1980x1050x150	King Single
I2KSL1000	2030x1050x150	King Single, Long
I2EW1000	1980x1150x150	Extra-Wide
I2EWL1000	2030x1150x150	Extra-Wide, Long
I2D1000	1980x1350x150	Double
I2DL1000	2030x1350x150	Double, Long
I2Q1000	1980x1530x150	Queen
I2QL1000	2030x1530x150	Queen, Long
I2K1000	1980x1850x150	King
I2KL1000	2030x1850x150	King, Long
	Customisable	CAN BE MADE TO SUIT ANY BED
THERAPEUTIC WEIGHT RANGE*	40-150KG	
APPLICATIONS	<input checked="" type="checkbox"/> AMBULANT PATIENTS <input checked="" type="checkbox"/> AGED CARE <input checked="" type="checkbox"/> HOME CARE	
WARRANTY**	3-YEAR FOAM CORE WARRANTY 2-YEAR COVER WARRANTY	
STANDARD COVER TYPE	ADVANTIFLEX CLASSIC	

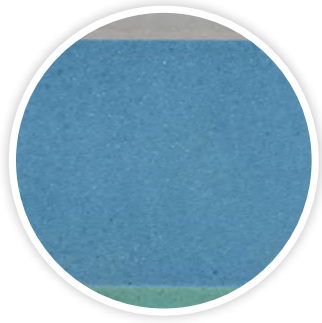
# Features

---



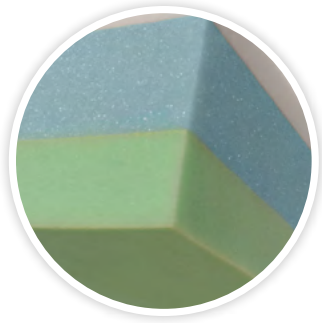
## **AIROFORM MEMORY IMMERSION INTERFACE LAYER**

- ✓ High Temperature Stability to deliver consistent immersion, performance and comfort
- ✓ Maximises Patient contact with Support Surfaces Providing Pressure Redistribution
- ✓ Alleviates localised pressure points
- ✓ Depth calibrated to maximise functionality and patient mobility
- ✓ Visco-elastic/Memory Foam cell structure provides low-shear surface
- ✓ Firmness: Soft



## **DELUXE GRADE MID-LAYER**

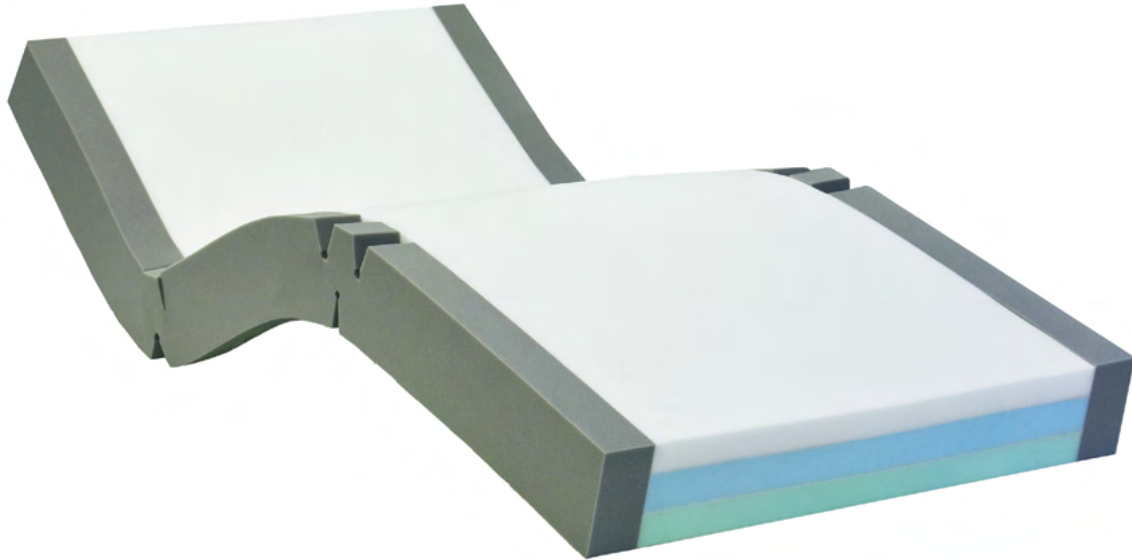
- ✓ Open cell high quality foam
- ✓ Provides exceptional comfort and postural support for repositioning and patient care



## **FIRM FOUNDATION LAYER**

- ✓ Provides protection against 'bottoming-out' during transfer, repositioning and whilst in the inclined/fowler position
- ✓ Provides exceptional comfort, support for repositioning and patient care

# Icon I3 Triple Layer Medium Risk Pressure Care Mattress



**SHEAR & FRICTION:** ✓ ✓ ✓ ✓ ✓  
**REPOSITIONING:** ✓ ✓ ✓ ✓ ✓  
**INFECTION CONTROL:** ✓ ✓ ✓ ✓ ✓  
**FIRMNESS:** ✓ ✓ ✓ ✓ ✓

**MOISTURE & MICROCLIMATE:** ✓ ✓ ✓ ✓ ✓  
**PERFORMANCE & LONGEVITY:** ✓ ✓ ✓ ✓ ✓  
**MOBILITY & FUNCTION:** ✓ ✓ ✓ ✓ ✓  
**PRESSURE CARE RATING:** **LOW-MEDIUM RISK**

## / Icon I3

CODE	DIMENSIONS (MM)	SIZE
I3S1000	1980x880x150	Single
I3SL1000	2030x880x150	Single, Long
I3KS1000	1980x1050x150	King Single
I3KSL1000	2030x1050x150	King Single, Long
I3EW1000	1980x1150x150	Extra-Wide
I3EWL1000	2030x1150x150	Extra Wide, Long
I3D1000	1980x1350x150	Double
I3DL1000	2030x1350x150	Double, Long
I3Q1000	1980x1530x150	Queen
I3QL1000	2030x1530x150	Queen, Long
I3K1000	1980x1850x150	King
I3KL1000	2030x1850x150	King, Long
	Customisable	CAN BE MADE TO SUIT ANY BED
<b>THERAPEUTIC WEIGHT RANGE*</b>	40-150KG	
<b>APPLICATIONS</b>	✓ HOSPITAL WARDS ✓ AGED CARE ✓ PALLIATIVE CARE ✓ HOME CARE	
<b>WARRANTY</b>	3-YEAR FOAM CORE WARRANTY 2-YEAR COVER WARRANTY	
<b>STANDARD COVER TYPE</b>	ADVANTIFLEX CLASSIC	

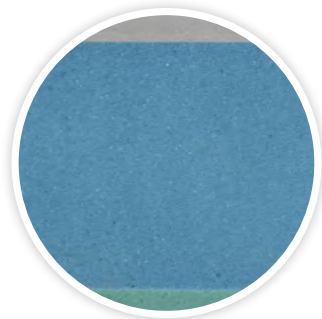
# Features

---



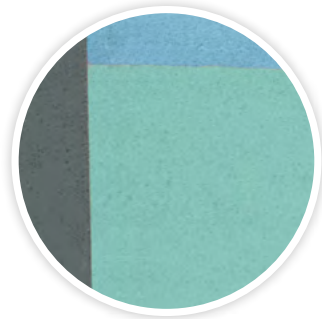
## AIROFORM MEMORY IMMERSION INTERFACE LAYER

- ✓ High Temperature Stability to deliver consistent immersion, performance and comfort
- ✓ Maximises Patient contact with Support Surfaces Providing Pressure Redistribution
- ✓ Alleviates localised pressure points
- ✓ Depth calibrated to maximise functionality and patient mobility
- ✓ Visco-elastic/Memory Foam cell structure provides low-shear surface
- ✓ Firmness: Soft



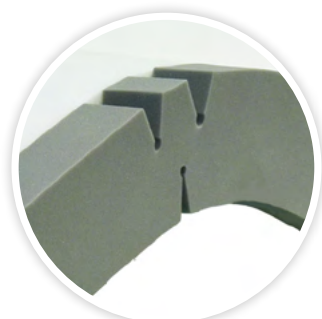
## DELUXE GRADE MID-LAYER

- ✓ Open cell high quality foam
- ✓ Provides exceptional comfort and postural support for repositioning and patient care



## FIRM FOUNDATION LAYER

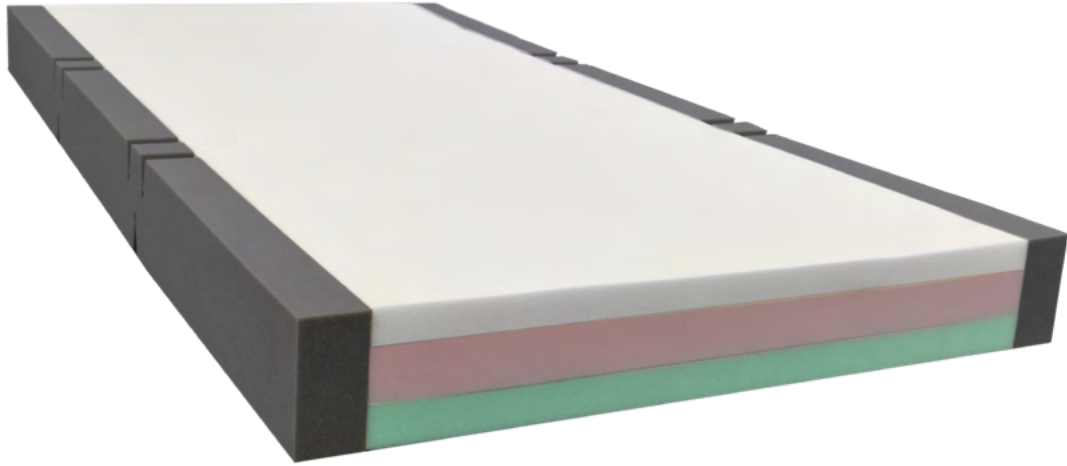
- ✓ Provides protection against 'bottoming-out' during transfer, repositioning and whilst in the inclined/fowler position
- ✓ Provides exceptional comfort, support for repositioning and patient care



## HINGED STRENGTHENED SIDES

- ✓ Increase lateral stability of support surface
- ✓ Improves patient safety and encourages central patient positioning
- ✓ Make patient transfers easier
- ✓ Unique hinge profile reduces foam fatigue and allow mattress to easily conform to varied bed positions
- ✓ Enables ease of primary patient care

# Paediatric Icon I3 Triple Layer Medium Risk Pressure Care Mattress



**SHEAR & FRICTION:** ✓ ✓ ✓ ✓ ✓  
**REPOSITIONING:** ✓ ✓ ✓ ✓ ✓  
**INFECTION CONTROL:** ✓ ✓ ✓ ✓ ✓  
**FIRMNESS:** ✓ ✓ ✓ ✓ ✓

**MOISTURE & MICROCLIMATE:** ✓ ✓ ✓ ✓ ✓  
**PERFORMANCE & LONGEVITY:** ✓ ✓ ✓ ✓ ✓  
**MOBILITY & FUNCTION:** ✓ ✓ ✓ ✓ ✓  
**PRESSURE CARE RATING:** **LOW-MEDIUM RISK**

## / Paediatric Icon I3

CODE	DIMENSIONS (MM)	SIZE
PI3S1000	1980x880x150	Single
PI3SL1000	2030x880x150	Single, Long
PI3KS1000	1980x1050x150	King Single
PI3KSL1000	2030x1050x150	King Single, Long
PI3EW1000	1980x1150x150	Extra-Wide
PI3EWL1000	2030x1150x150	Extra-Wide, Long
PI3D1000	1980x1350x150	Double
PI3DL1000	2030x1350x150	Double, Long
PI3Q1000	1980x1530x150	Queen
PI3QL1000	2030x1530x150	Queen, Long
PI3K1000	1980x1850x150	King
PI3KL1000	2030x1850x150	King, Long
	Customisable	CAN BE MADE TO SUIT ANY BED
<b>THERAPEUTIC WEIGHT RANGE*</b>	<b>10-90KG</b>	
<b>APPLICATIONS</b>	✓ HOSPITAL WARDS ✓ AGED CARE ✓ PALLIATIVE CARE ✓ HOME CARE	
<b>WARRANTY</b>	3-YEAR FOAM CORE WARRANTY 2-YEAR COVER WARRANTY	
<b>STANDARD COVER TYPE</b>	ADVANTIFLEX CLASSIC	



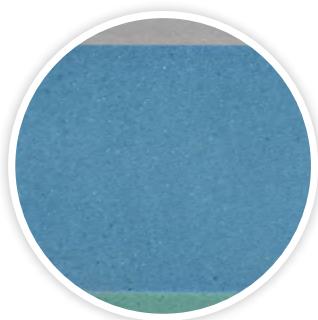
# Features

---



## AIROFORM MEMORY IMMERSION INTERFACE LAYER - EXTRA-SOFT

- ✓ High Temperature Stability to deliver consistent immersion, performance and comfort
- ✓ Maximises Patient contact with Support Surfaces Providing Pressure Redistribution
- ✓ Alleviates localised pressure points
- ✓ Depth calibrated to maximise functionality and patient mobility
- ✓ Prevents collapse, tearing and side-ways twisting of second layer to ensure patient receives full immersion benefit
- ✓ Visco-elastic/Memory Foam cell structure provides low-shear surface
- ✓ Firmness: Extra-Soft



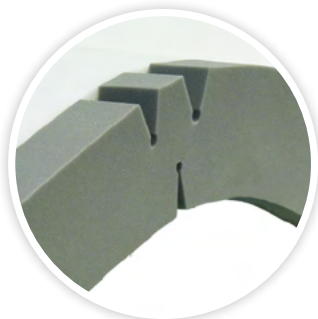
## DELUXE GRADE MID-LAYER

- ✓ Open cell high quality foam
- ✓ Provides exceptional comfort and postural support for repositioning and patient care



## FIRM FOUNDATION LAYER

- ✓ Provides protection against 'bottoming-out' during transfer, repositioning and whilst in the inclined/fowler position
- ✓ Provides exceptional comfort, support for repositioning and patient care



## HINGED STRENGTHENED SIDES

- ✓ Increase lateral stability of support surface
- ✓ Improves patient safety and encourages central patient positioning
- ✓ Make patient transfers easier
- ✓ Unique hinge profile reduces foam fatigue and allow mattress to easily conform to varied bed positions
- ✓ Enables ease of primary patient care

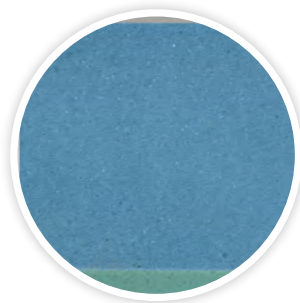
# HomeCare Icon

## Triple Layer Medium Risk Pressure Care Mattress



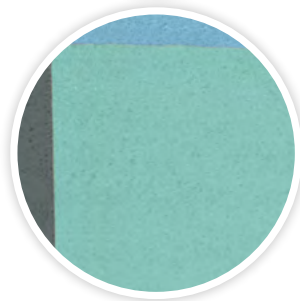
### AIROFORM MEMORY BREATHE IMMERSION INTERFACE LAYER

- ✓ High Temperature Stability to deliver consistent immersion, performance and comfort
- ✓ Maximises Patient contact with Support Surfaces Providing Pressure Redistribution
- ✓ Alleviates localised pressure points
- ✓ Depth calibrated to maximise functionality and patient mobility
- ✓ Unique Airoform Breathe ventilation system minimises heat entrapment and enhances core circulation providing a cooler sleep surface
- ✓ Visco-elastic/Memory Foam cell structure provides low-shear surface
- ✓ Firmness: Available Soft, Medium, Firm



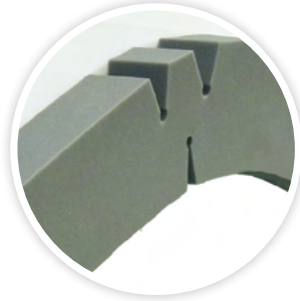
### DELUXE GRADE MID-LAYER

- ✓ Open cell high quality foam
- ✓ Provides exceptional comfort and postural support for repositioning and patient care
- ✓ Available Soft, Medium, Firm



### PREMIUM FIRM FOUNDATION LAYER

- ✓ Provides protection against 'bottoming-out' during transfer, repositioning and whilst in the inclined/fowler position
- ✓ Provides exceptional comfort, support for repositioning and patient care



### HINGED STRENGTHENED SIDES

- ✓ Increase lateral stability of support surface
- ✓ Improves patient safety and encourages central patient positioning
- ✓ Make patient transfers easier
- ✓ Unique hinge profile reduces foam fatigue and allow mattress to easily conform to varied bed positions
- ✓ Enables ease of primary patient care

# Features

CODE	DIMENSIONS (MM)	SIZE	THERAPEUTIC WEIGHT RANGE*
Icon Soft	<b>FIRMNESS:</b>		
ICONS15S	1900x900x150	Single	135 KG
ICONSL15S	2030x900x150	Single Long	135 KG
ICONKSL15S	2030x1070x150	King Single Long	135 KG
ICONDL15S	2030x1350x150	Double Long	135 KG
ICONQL15S	2030x1520x150	Queen Long	135 KG
ICONSQ15S	2030x760x150	Split Queen Long	135 KG
ICONS20S	1900x900x200	Single	185 KG
ICONSL20S	2030x900x200	Single Long	185 KG
ICONKSL20S	2030x1070x200	King Single Long	185 KG
ICONDL20S	2030x1350x200	Double Long	185 KG
ICONQL20S	2030x1520x200	Queen Long	185 KG
ICONSQ20S	2030x760x200	Split Queen Long	185 KG
Icon Medium	<b>FIRMNESS:</b>		
ICONS15M	1900x900x150	Single	165 KG
ICONSL15M	2030x900x150	Single Long	165 KG
ICONKSL15M	2030x1070x150	King Single Long	165 KG
ICONDL15M	2030x1350x150	Double Long	165 KG
ICONQL15M	2030x1520x150	Queen Long	165 KG
ICONSQ15M	2030x760x150	Split Queen Long	165 KG
ICONS20M	1900x900x200	Single	215 KG
ICONSL20M	2030x900x200	Single Long	215 KG
ICONKSL20M	2030x1070x200	King Single Long	215 KG
ICONDL20M	2030x1350x200	Double Long	215 KG
ICONQL20M	2030x1520x200	Queen Long	215 KG
ICONSQ20M	2030x760x200	Split Queen Long	215 KG
Icon Firm	<b>FIRMNESS:</b>		
ICONS15F	1900x900x150	Single	200 KG
ICONSL15F	2030x900x150	Single Long	200 KG
ICONKSL15F	2030x1070x150	King Single Long	200 KG
ICONDL15F	2030x1350x150	Double Long	200 KG
ICONQL15F	2030x1520x150	Queen Long	200 KG
ICONSQ15F	2030x760x150	Split Queen Long	200 KG
ICONS20F	1900x900x200	Single	250 KG
ICONSL20F	2030x900x200	Single Long	250 KG
ICONKSL20F	2030x1070x200	King Single Long	250 KG
ICONDL20F	2030x1350x200	Double Long	250 KG
ICONQL20F	2030x1520x200	Queen Long	250 KG
ICONSQ20F	2030x760x200	Split Queen Long	250 KG
	Customisable	CAN BE MADE TO SUIT ANY BED	
APPLICATIONS	 HOME CARE		
WARRANTY	5-YEAR FOAM CORE WARRANTY 2-YEAR COVER WARRANTY		
STANDARD COVER TYPE	LUXURY QUILTED COTTON		

# Icon I34 Premium Triple Layer Medium Risk Pressure Care Mattress



**SHEAR & FRICTION:**



**REPOSITIONING:**



**INFECTION CONTROL:**



**FIRMNESS:**



**MOISTURE & MICROCLIMATE:**



**PERFORMANCE & LONGEVITY:**



**MOBILITY & FUNCTION:**



**PRESSURE CARE RATING:**

**LOW-MEDIUM RISK**

## / Icon I34

CODE	DIMENSIONS (MM)	SIZE
I34S1000	1980x880x150	Single
I34SL1000	2030x880x150	Single, Long
I34KS1000	1980x1050x150	King Single
I34KSL1000	2030x1050x150	King Single, Long
I34EW1000	1980x1150x150	Extra-Wide
I34EWL1000	2030x1150x150	Extra-Wide, Long
I34D1000	1980x1350x150	Double
I34DL1000	2030x1350x150	Double, Long
I34Q1000	1980x1530x150	Queen
I34QL1000	2030x1530x150	Queen, Long
I34K1000	1980x1850x150	King
I34KL1000	2030x1850x150	King, Long
	Customisable	CAN BE MADE TO SUIT ANY BED
<b>THERAPEUTIC WEIGHT RANGE*</b>	40-165KG	
<b>APPLICATIONS</b>	<input checked="" type="checkbox"/> HOSPITAL WARDS <input checked="" type="checkbox"/> AGED CARE <input checked="" type="checkbox"/> PALLIATIVE CARE <input checked="" type="checkbox"/> HOME CARE	
<b>WARRANTY</b>	5-YEAR FOAM CORE WARRANTY 2-YEAR COVER WARRANTY	
<b>STANDARD COVER TYPE</b>	ADVANTIFLEX CLASSIC	

# Features

---



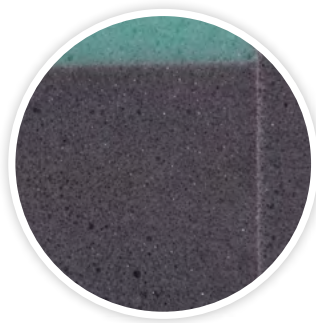
## **AIROFORM MEMORY BREATHE IMMERSION INTERFACE LAYER**

- ✓ High Temperature Stability to deliver consistent immersion, performance and comfort
- ✓ Maximises Patient contact with Support Surfaces Providing Pressure Redistribution
- ✓ Alleviates localised pressure points
- ✓ Depth calibrated to maximise functionality and patient mobility
- ✓ Unique Airoform Breathe ventilation system minimises heat entrapment and enhances core circulation providing a cooler sleep surface
- ✓ Visco-elastic/Memory Foam cell structure provides low-shear surface
- ✓ Firmness: Soft



## **PREMIUM GRADE MID-LAYER**

- ✓ Open cell high quality foam
- ✓ Provides exceptional comfort and postural support for repositioning and patient care



## **PREMIUM FIRM FOUNDATION LAYER**

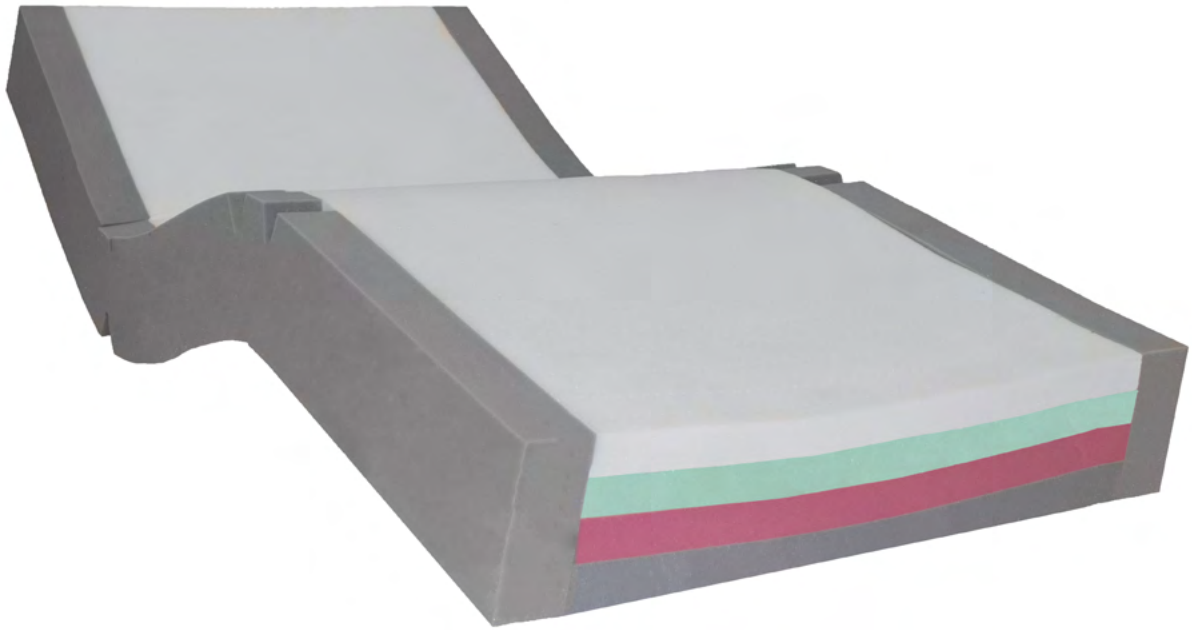
- ✓ Provides protection against 'bottoming-out' during transfer, repositioning and whilst in the inclined/fowler position
- ✓ Provides exceptional comfort, support for repositioning and patient care



## **HINGED STRENGTHENED SIDES**

- ✓ Increase lateral stability of support surface
- ✓ Improves patient safety and encourages central patient positioning
- ✓ Make patient transfers easier
- ✓ Unique hinge profile reduces foam fatigue and allow mattress to easily conform to varied bed positions
- ✓ Enables ease of primary patient care

# Icon I35 4-Layered Medium Risk Pressure Care Mattress



**SHEAR & FRICTION:**



**REPOSITIONING:**



**INFECTION CONTROL:**



**FIRMNESS:**



**MOISTURE & MICROCLIMATE:**



**PERFORMANCE & LONGEVITY:**



**MOBILITY & FUNCTION:**



**PRESSURE CARE RATING:**

**MEDIUM RISK**

## / Icon I35

CODE	DIMENSIONS (MM)	SIZE
I35S1000	1980x880x150	Single
I35SL1000	2030x880x150	Single, Long
I35KS1000	1980x1050x150	King Single
I35KSL1000	2030x1050x150	King Single, Long
I35EW1000	1980x1150x150	Extra-Wide
I35EWL1000	2030x1150x150	Extra-Wide, Long
I35D1000	1980x1350x150	Double
I35DL1000	2030x1350x150	Double, Long
I35Q1000	1980x1530x150	Queen
I35QL1000	2030x1530x150	Queen, Long
I35K1000	1980x1850x150	King
I35KL1000	2030x1850x150	King, Long
	Customisable	CAN BE MADE TO SUIT ANY BED
THERAPEUTIC WEIGHT RANGE	40-200KG	
APPLICATIONS	<input checked="" type="checkbox"/> HOSPITAL WARDS <input checked="" type="checkbox"/> AGED CARE <input checked="" type="checkbox"/> PALLIATIVE CARE <input checked="" type="checkbox"/> HOME CARE	
WARRANTY	5-YEAR FOAM CORE WARRANTY 2-YEAR COVER WARRANTY	
STANDARD COVER TYPE	ADVANTIFLEX CLASSIC	

# Features



## AIROFORM MEMORY BREATHE IMMERSION INTERFACE LAYER

- ✓ High Temperature Stability to deliver consistent immersion, performance and comfort
- ✓ Maximises Patient contact with Support Surfaces Providing Pressure Redistribution
- ✓ Alleviates localised pressure points
- ✓ Depth calibrated to maximise functionality and patient mobility
- ✓ Unique Airoform Breathe ventilation system minimises heat entrapment and enhances core circulation providing a cooler sleep surface
- ✓ Visco-elastic/Memory Foam cell structure provides low-shear surface
- ✓ Firmness: Soft



## 4-LAYERED, GRADED PRESSURE RELIEVING CORE

- ✓ High specification foam for longevity and performance
- ✓ Provides graded postural support and patient comfort
- ✓ Anti-microbial treatment applied to foam maximises longevity and core micro-climate
- ✓ Excellent core stability to encourage centralised patient positioning to minimise falls risk, entrapment and enhance pressure relief



## PREMIUM FIRM FOUNDATION LAYER

- ✓ Provides protection against 'bottoming-out' during transfer, repositioning and whilst in the inclined/fowler position
- ✓ Provides exceptional comfort, support for repositioning and patient care



## HINGED STRENGTHENED SIDES

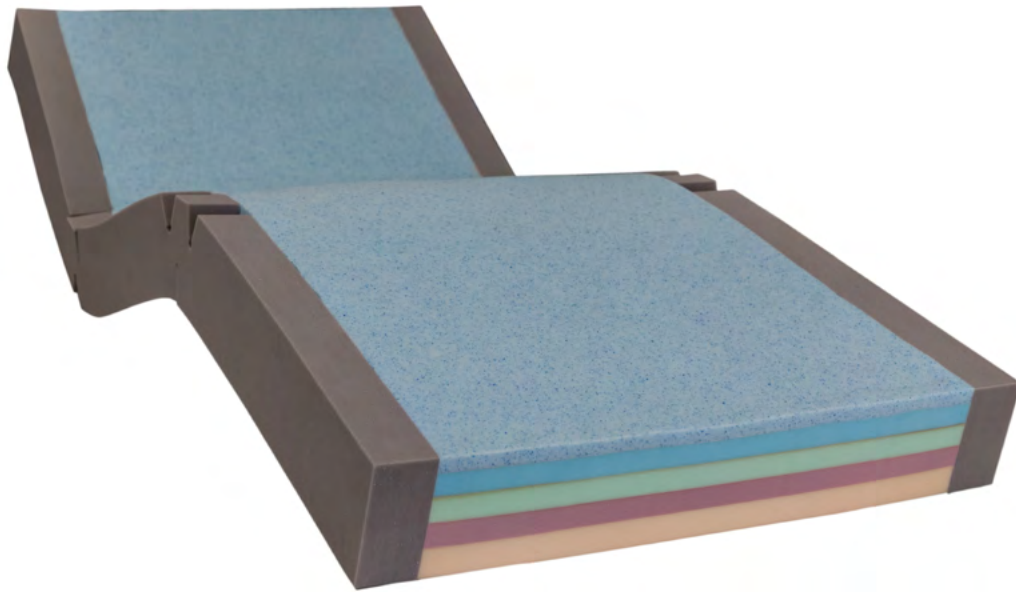
- ✓ Increase lateral stability of support surface
- ✓ Improves patient safety and encourages central patient positioning
- ✓ Make patient transfers easier
- ✓ Unique hinge profile reduces foam fatigue and allow mattress to easily conform to varied bed positions
- ✓ Enables ease of primary patient care



## SLOPED HEEL PRESSURE TRANSFER ZONE

- ✓ Enhances pressure relief & protection for critical at-risk heel region
- ✓ Offloads pressure from the patients heels and transfers it to calf area
- ✓ Unobtrusive, does not require any adjustment

# Icon I4 5-Layered Versatile Medium Risk Pressure Care Mattress



**SHEAR & FRICTION:**



**REPOSITIONING:**



**INFECTION CONTROL:**



**FIRMNESS:**



**MOISTURE & MICROCLIMATE:**



**PERFORMANCE & LONGEVITY:**



**MOBILITY & FUNCTION:**



**PRESSURE CARE RATING:**

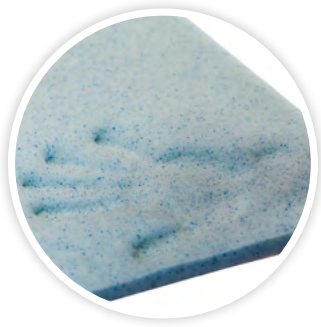
**MEDIUM RISK**

## / Icon I4

CODE	DIMENSIONS (MM)	SIZE
I4S1000	1980x880x160	Single
I4SL1000	2030x880x160	Single, Long
I4KS1000	1980x1050x160	King Single
I4KSL1000	2030x1050x160	King Single, Long
I4EW1000	1980x1150x160	Extra-Wide
I4EWL1000	2030x1150x160	Extra-Wide Long
I4D1000	1980x1350x160	Double
I4DL1000	2030x1350x160	Double, Long
I4Q1000	1980x1530x160	Queen
I4QL1000	2030x1530x160	Queen, Long
I4K1000	1980x1850x160	King
I4KL1000	2030x1850x160	King, Long
	Customisable	CAN BE MADE TO SUIT ANY BED
THERAPEUTIC WEIGHT RANGE	30-250KG	
APPLICATIONS	✓ HOSPITAL WARDS ✓ AGED CARE ✓ HOME CARE	
WARRANTY	5-YEAR FOAM CORE WARRANTY 4-YEAR COVER WARRANTY	
STANDARD COVER TYPE	PREMIFLEX CLASSIC	



# Features



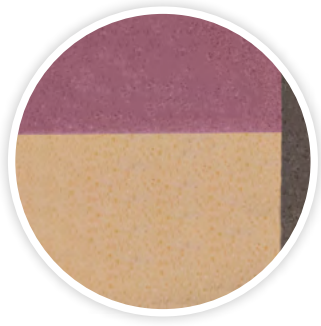
## AIRFORM GEL IMMERSION INTERFACE LAYER

- ✓ Visco-elastic cell structure provides low-shear surface and effective immersion
- ✓ Gel particles work to absorb excessive heat and regulate patient temperature
- ✓ Provides enhanced breathability minimising risk of excessive patient heat
- ✓ Provides exceptional comfort



## UNIQUE, 5 LAYERED CORE

- ✓ High specification foam for longevity and performance
- ✓ Provides graded postural support and patient comfort
- ✓ Anti-microbial treatment applied to foam maximises longevity and core micro-climate
- ✓ Excellent core stability to encourage centralised patient positioning to minimise falls risk, entrapment and enhance pressure relief



## PREMIUM FIRM FOUNDATION LAYER

- ✓ Provides protection against 'bottoming-out' during transfer, repositioning and whilst in the inclined/fowler position
- ✓ Provides exceptional comfort, support for repositioning and patient care



## HINGED STRENGTHENED SIDES

- ✓ Increase lateral stability of support surface
- ✓ Improves patient safety and encourages central patient positioning
- ✓ Make patient transfers easier
- ✓ Unique hinge profile reduces foam fatigue and allow mattress to easily conform to varied bed positions
- ✓ Enables ease of primary patient care

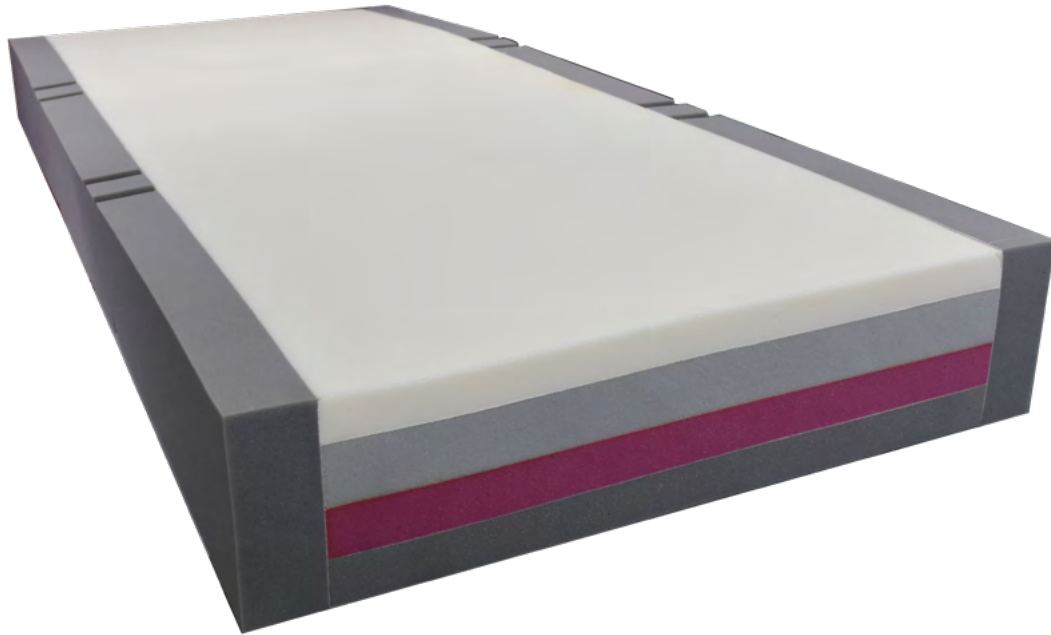


## ANTI-SHEAR INNER COVER

- ✓ Dramatically reduces shearing forces at the patient interface
- ✓ Fine stretch Lycra based material is wrinkle free and conforming to varied bed positions
- ✓ Provides additional protection to the foam core

# Icon I6 Plush

4-Layered Premium Luxury Medium Risk Pressure Care Mattress



**SHEAR & FRICTION:**



**REPOSITIONING:**



**INFECTION CONTROL:**



**FIRMNESS:**



**MOISTURE & MICROCLIMATE:**



**PERFORMANCE & LONGEVITY:**



**MOBILITY & FUNCTION:**



**PRESSURE CARE RATING:**

**MEDIUM RISK**

## / Icon I6 Plush

CODE	DIMENSIONS (MM)	SIZE
I6PS2000	1980x880x200	Single
I6PSL2000	2030x880x200	Single, Long
I6PKS2000	1980x1050x200	King Single
I6PKSL2000	2030x1050x200	King Single, Long
I6PEW2000	1980x1150x200	Extra-Wide
I6PEWL2000	2030x1150x200	Extra-Wide, Long
I6PD2000	1980x1350x200	Double
I6PDL2000	2030x1350x200	Double, Long
I6PQ2000	1980x1530x200	Queen
I6PQL2000	2030x1530x200	Queen, Long
I6PK2000	1980x1850x200	King
I6PKL2000	2030x1850x200	King, Long
	Customisable	CAN BE MADE TO SUIT ANY BED
<b>THERAPEUTIC WEIGHT RANGE*</b>	30-200KG	
<b>APPLICATIONS</b>	<input checked="" type="checkbox"/> HOSPITAL WARDS <input checked="" type="checkbox"/> AGED CARE <input checked="" type="checkbox"/> HOME CARE	
<b>WARRANTY</b>	5-YEAR FOAM CORE WARRANTY 2-YEAR COVER WARRANTY	
<b>STANDARD COVER TYPE</b>	ADVANTIFLEX CLASSIC	

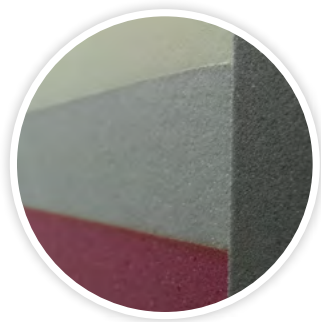
# Features

---



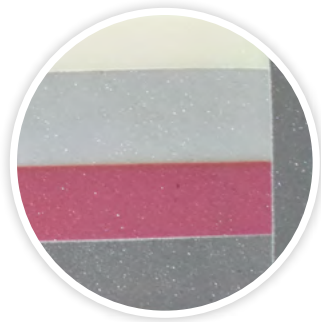
## AIROFORM MEMORY IMMERSION INTERFACE LAYER - EXTRA-SOFT

- ✓ High Temperature Stability to deliver consistent immersion, performance and comfort
- ✓ Maximises Patient contact with Support Surfaces Providing Pressure Redistribution
- ✓ Alleviates localised pressure points
- ✓ Depth calibrated to maximise functionality and patient mobility
- ✓ Visco-elastic/Memory Foam cell structure provides low-shear surface
- ✓ Firmness: Extra-Soft



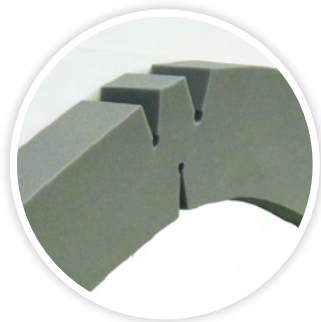
## ULTRA-HIGH PERFORMANCE SECONDARY LAYER

- ✓ Soft to Allow Additional Immersion
- ✓ High Responsiveness to Support Repositioning/Patient Transfer
- ✓ Open-Cell, Breathable Foam Technology
- ✓ Provides Excellent Anatomical Support



## DUAL PREMIUM FIRM FOUNDATION SUPPORT FOAMS

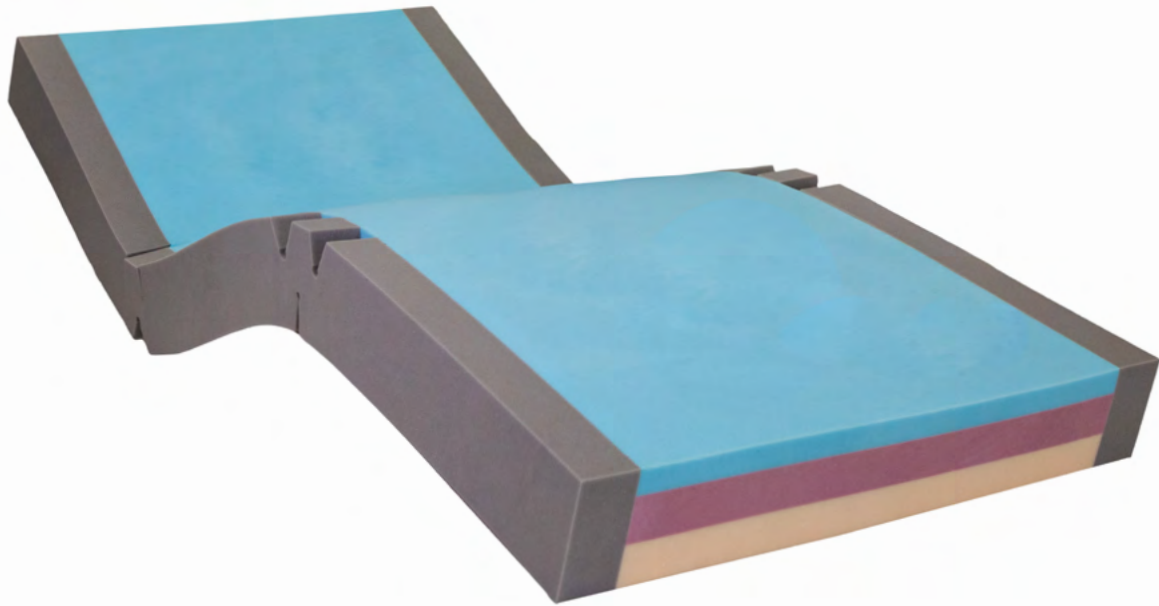
- ✓ Hospital Grade, Designed to Perform within High Humidity Conditions
- ✓ Protects the Patient Against Bottoming Out in Sacral Region
- ✓ Provides Excellent Anatomical Support
- ✓ Provides protection against 'bottoming-out' during transfer, repositioning and whilst in the inclined/fowler position
- ✓ Provides exceptional comfort, support for repositioning and patient care



## HINGED STRENGTHENED SIDES

- ✓ Increase lateral stability of support surface
- ✓ Improves patient safety and encourages central patient positioning
- ✓ Make patient transfers easier
- ✓ Unique hinge profile reduces foam fatigue and allow mattress to easily conform to varied bed positions
- ✓ Enables ease of primary patient care

# Icon I38 Bariatric Triple Layer Medium Risk Pressure Care Mattress



**SHEAR & FRICTION:**



**REPOSITIONING:**



**INFECTION CONTROL:**



**FIRMNESS:**



**MOISTURE & MICROCLIMATE:**



**PERFORMANCE & LONGEVITY:**



**MOBILITY & FUNCTION:**



**PRESSURE CARE RATING:**

**LOW-MEDIUM RISK**

## / Icon I38

CODE	DIMENSIONS (MM)	SIZE
I38S1000	1980x880x150	Single
I38SL1000	2030x880x150	Single, Long
I38KS1000	1980x1050x150	King Single
I38KSL1000	2030x1050x150	King Single, Long
I38EW1000	1980x1150x150	Extra-Wide
I38EWL1000	2030x1150x150	Extra-Wide, Long
I38D1000	1980x1350x150	Double
I38DL1000	2030x1350x150	Double, Long
I38Q1000	1980x1530x150	Queen
I38QL1000	2030x1530x150	Queen, Long
I38K1000	1980x1850x150	King
I38KL1000	2030x1850x150	King, Long
	Customisable	CAN BE MADE TO SUIT ANY BED
<b>THERAPEUTIC WEIGHT RANGE*</b>	<b>120-280KG</b>	
<b>APPLICATIONS</b>	✓ HOSPITAL WARDS ✓ AGED CARE ✓ PALLIATIVE CARE ✓ HOME CARE	
<b>WARRANTY**</b>	<b>5-YEAR FOAM CORE WARRANTY 2-YEAR COVER WARRANTY</b>	
<b>STANDARD COVER TYPE</b>	<b>ADVANTIFLEX CLASSIC</b>	

# Features



## AIROFORM MEMORY IMMERSION INTERFACE LAYER - MEDIUM

- ✓ High Temperature Stability to deliver consistent immersion, performance and comfort
- ✓ Maximises Patient contact with Support Surfaces Providing Pressure Redistribution
- ✓ Alleviates localised pressure points
- ✓ Depth calibrated to maximise functionality and patient mobility
- ✓ Visco-elastic/Memory Foam cell structure provides low-shear surface
- ✓ Firmness: Medium



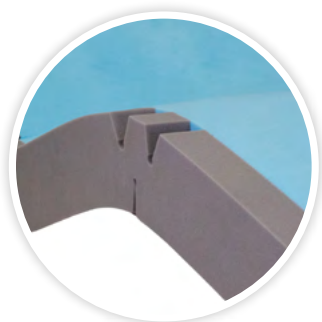
## DELUXE GRADE MID-LAYER

- ✓ Open cell high quality foam
- ✓ Provides exceptional comfort and postural support for repositioning and patient care



## FIRM FOUNDATION LAYER

- ✓ Provides protection against 'bottoming-out' during transfer, repositioning and whilst in the inclined/fowler position
- ✓ Provides exceptional comfort, support for repositioning and patient care



## HINGED STRENGTHENED SIDES

- ✓ Increase lateral stability of support surface
- ✓ Improves patient safety and encourages central patient positioning
- ✓ Make patient transfers easier
- ✓ Unique hinge profile reduces foam fatigue and allow mattress to easily conform to varied bed positions
- ✓ Enables ease of primary patient care

# Icon Maxx 350kg Bariatric Care Medium Risk Pressure Care Mattress



**SHEAR & FRICTION:**



**REPOSITIONING:**



**INFECTION CONTROL:**



**FIRMNESS:**



**MOISTURE & MICROCLIMATE:**



**PERFORMANCE & LONGEVITY:**



**MOBILITY & FUNCTION:**



**PRESSURE CARE RATING:**

**MEDIUM RISK**

## / Icon Maxx 350kg

CODE	DIMENSIONS (MM)	SIZE
IM1S1000	1980x880x180	Single
IM1SL1000	2030x880x180	Single, Long
IM1KS1000	1980x1050x180	King Single
IM1KSL1000	2030x1050x180	King Single, Long
IM1EW1000	1980x1150x180	Extra-Wide
IM1EWL1000	2030x1150x180	Extra-Wide, Long
IM1D1000	1980x1350x180	Double
IM1DL1000	2030x1350x180	Double, Long
IM1Q1000	1980x1530x180	Queen
IM1QL1000	2030x1530x180	Queen, Long
IM1K1000	1980x1850x180	King
IM1KL1000	2030x1850x180	King, Long
	Customisable	CAN BE MADE TO SUIT ANY BED
<b>THERAPEUTIC WEIGHT RANGE*</b>	<b>150-350KG</b>	
<b>APPLICATIONS</b>	HOSPITAL WARDS                      AGED CARE                      HOME CARE	
<b>WARRANTY</b>	5-YEAR FOAM CORE WARRANTY 2-YEAR COVER WARRANTY	
<b>STANDARD COVER TYPE</b>	ADVANTIFLEX CLASSIC W/ EXTRA HEAVY DUTY BASE	

# Features



## **AIROFORM MEMORY IMMERSION INTERFACE LAYER - MEDIUM**

- ✓ High Temperature Stability to deliver consistent immersion, performance and comfort
- ✓ Maximises Patient contact with Support Surfaces Providing Pressure Redistribution
- ✓ Alleviates localised pressure points
- ✓ Depth calibrated to maximise functionality and patient mobility
- ✓ Visco-elastic/Memory Foam cell structure provides low-shear surface
- ✓ Firmness: Medium



## **PREMIUM POSTURAL SUPPORT SECONDARY LAYER**

- ✓ Graded support and patient comfort in supine, prone, lateral and fowler positions
- ✓ Excellent core stability to encourage centralised patient positioning
- ✓ Provides protection against 'bottoming-out' during transfer, repositioning and whilst in the inclined/fowler position
- ✓ Graded for ultimate patient support to minimise falls risk, entrapment and enhance pressure relief

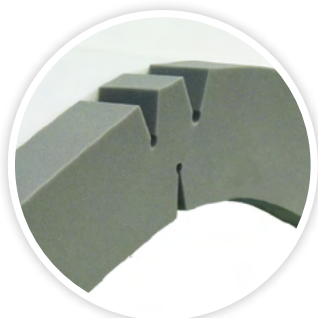


## **PREMIUM FIRM FOUNDATION LAYER**

- ✓ Provides protection against 'bottoming-out' during transfer, repositioning and whilst in the inclined/fowler position
- ✓ Provides exceptional comfort, support for repositioning and patient care

## **TRIPLE SECTION, SPLIT FOUNDATION LAYER**

- ✓ Enhances profiling with adjustable bed surface positions minimising excess strain on bed mechanisms



## **HINGED STRENGTHENED SIDES**

- ✓ Increase lateral stability of support surface
- ✓ Improves patient safety and encourages central patient positioning
- ✓ Make patient transfers easier
- ✓ Unique hinge profile reduces foam fatigue and allow mattress to easily conform to varied bed positions
- ✓ Enables ease of primary patient care

# Icon Maxx 500kg

Bariatric Care Medium Risk  
Pressure Care Mattress



**SHEAR & FRICTION:**



**REPOSITIONING:**



**INFECTION CONTROL:**



**FIRMNESS:**



**MOISTURE & MICROCLIMATE:**



**PERFORMANCE & LONGEVITY:**



**MOBILITY & FUNCTION:**



**PRESSURE CARE RATING:**

**MEDIUM RISK**

## / Icon Maxx 500kg

CODE	DIMENSIONS (MM)	SIZE
IM5S1000	1980x880x200	Single
IM5SL1000	2030x880x200	Single, Long
IM5KS1000	1980x1050x200	King Single
IM5KSL1000	2030x1050x200	King Single, Long
IM5EW1000	1980x1150x200	Extra-Wide
IM5EWL1000	2030x1150x200	Extra-Wide, Long
IM5D1000	1980x1350x200	Double
IM5DL1000	2030x1350x200	Double, Long
IM5Q1000	1980x1530x200	Queen
IM5QL1000	2030x1530x200	Queen, Long
IM5K1000	1980x1850x200	King
IM5KL1000	2030x1850x200	King, Long
	Customisable	CAN BE MADE TO SUIT ANY BED
<b>THERAPEUTIC WEIGHT RANGE*</b>	<b>150-0KG</b>	
<b>APPLICATIONS</b>	✔ HOSPITAL WARDS ✔ AGED CARE ✔ HOME CARE	
<b>WARRANTY</b>	<b>5-YEAR FOAM CORE WARRANTY 2-YEAR COVER WARRANTY</b>	
<b>STANDARD COVER TYPE</b>	<b>ADVANTIFLEX CLASSIC W/ EXTRA HEAVY DUTY BASE</b>	

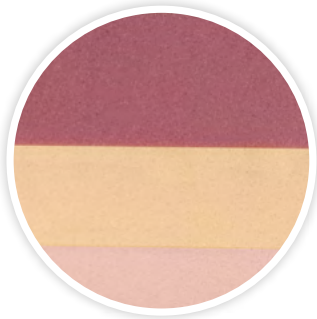


# Features



## **AIROFORM MEMORY IMMERSION INTERFACE LAYER - MEDIUM**

- ✓ High Temperature Stability to deliver consistent immersion, performance and comfort
- ✓ Maximises Patient contact with Support Surfaces Providing Pressure Redistribution
- ✓ Alleviates localised pressure points
- ✓ Depth calibrated to maximise functionality and patient mobility
- ✓ Visco-elastic/Memory Foam cell structure provides low-shear surface
- ✓ Firmness: Medium



## **PREMIUM POSTURAL SUPPORT SECONDARY LAYER**

- ✓ Graded support and patient comfort in supine, prone, lateral and fowler positions
- ✓ Excellent core stability to encourage centralised patient positioning
- ✓ Provides protection against 'bottoming-out' during transfer, repositioning and whilst in the inclined/fowler position
- ✓ Graded for ultimate patient support to minimise falls risk, entrapment and enhance pressure relief

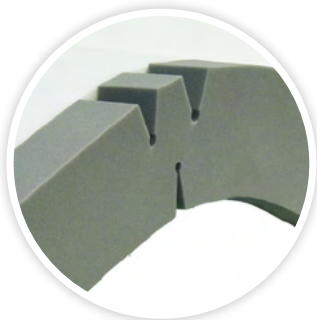


## **PREMIUM FIRM FOUNDATION LAYER**

- ✓ Provides protection against 'bottoming-out' during transfer, repositioning and whilst in the inclined/fowler position
- ✓ Provides exceptional comfort, support for repositioning and patient care

## **TRIPLE SECTION, SPLIT FOUNDATION LAYER**

- ✓ Enhances profiling with adjustable bed surface positions minimising excess strain on bed mechanisms



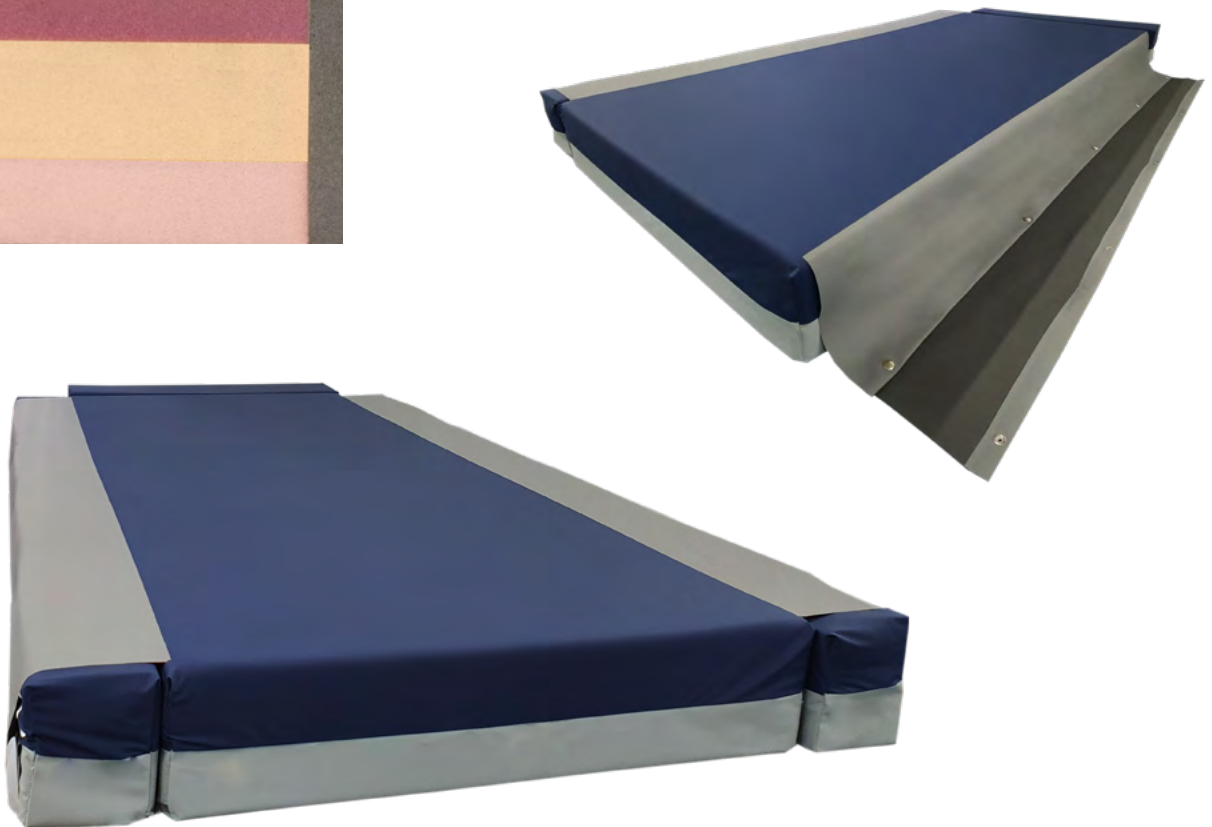
## **HINGED STRENGTHENED SIDES**

- ✓ Increase lateral stability of support surface
- ✓ Improves patient safety and encourages central patient positioning
- ✓ Make patient transfers easier
- ✓ Unique hinge profile reduces foam fatigue and allow mattress to easily conform to varied bed positions
- ✓ Enables ease of primary patient care

# Icon Maxx

## Pressure Care Mattress Width & Length Extension Bolster Kit

The Icon Maxx width & length extension kits have been designed to overcome the common issue of using loose, streamline, low care bolsters with bariatric mattresses on a bariatric bed with width and length extension/narrowing features. The Icon Maxx width extension kits are manufactured to the same specifications as the Icon Maxx Bariatric Care Pressure Care Mattress and continue to offer pressure care and support for patients up to 500kg, including firm strengthened sides. The length extension bolsters are constructed of a dual density pressure care foam combination - incorporating Airoform Memory immersion interface and a high density, medium firmness lower support foam. The cover has a unique linkage system connecting the bolster system to the central mattress. This linkage system prevents bolsters becoming loose and misplaced as well as providing greater surface stability particularly for patient transfer and ingress/egress from bed platform. The bolsters are fastened by a quick release press-stud system - no velcro. As is the cover on the Icon Maxx mattress, All seams on the bolster kit are high frequency welded to reduce risk of infection and contamination.





#### **AIROFORM MEMORY IMMERSION INTERFACE LAYER - MEDIUM**

- ✓ High Temperature Stability to deliver consistent immersion, performance and comfort
- ✓ Maximises Patient contact with Support Surfaces Providing Pressure Redistribution
- ✓ Alleviates localised pressure points
- ✓ Depth calibrated to maximise functionality and patient mobility
- ✓ Visco-elastic/Memory Foam cell structure provides low-shear surface
- ✓ Firmness: Medium



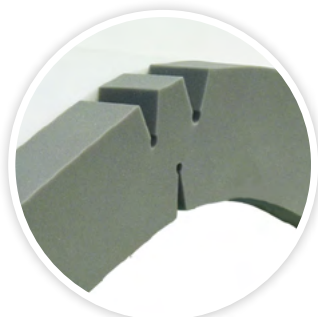
#### **PREMIUM POSTURAL SUPPORT LAYERS**

- ✓ Graded support and patient comfort in supine, prone, lateral and fowler positions
- ✓ Excellent core stability to encourage centralised patient positioning
- ✓ Provides protection against 'bottoming-out' during transfer, repositioning and whilst in the inclined/fowler position
- ✓ Graded for ultimate patient support to minimise falls risk, entrapment and enhance pressure relief



#### **PREMIUM FIRM FOUNDATION LAYER**

- ✓ Provides protection against 'bottoming-out' during transfer, repositioning and whilst in the inclined/fowler position
- ✓ Provides exceptional comfort, support for repositioning and patient care



#### **HINGED STRENGTHENED SIDES**

- ✓ Increase lateral stability of support surface
- ✓ Improves patient safety and encourages central patient positioning
- ✓ Make patient transfers easier
- ✓ Unique hinge profile reduces foam fatigue and allow mattress to easily conform to varied bed positions
- ✓ Enables ease of primary patient care
- ✓ Strengthened Sides are Standard on Side Bolsters & Optional On Centre Mattress

# Luxury Quilted Cotton Cover

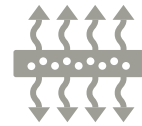
Open weave, breathable pressure care cover which looks and feels comparable to a luxury conventional residential mattress. 4-Way Stretch, anti-shearing, conforming open weave fabric compliments the multi-tiered foam structure offering pressure redistribution, immersion and envelopment. High breathability aids in microclimate control - encouraging air circulation which promotes health microclimate conditions at the skin interface and provides comfort especially to hot sleepers.



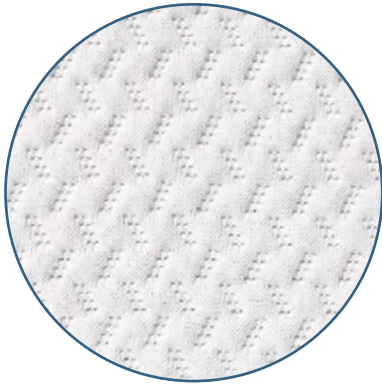
High durability



Excellent stretch



Breathable/  
vapour permeable



#### **LUXURY QUILTED QC1000 MATERIAL**

- ✓ Excellent breathability - open weave structure allows cooler sleep and reduces heat related sweating & discomfort
- ✓ 4-Way stretch preventing hammocking and stretching beneath bony regions
- ✓ Anatomically contouring - compliments immersion, envelopment and pressure distribution within mattress
- ✓ Anti-Shearing and Anti-Friction for protection of vulnerable skin
- ✓ High Quality, Luxury Comfort
- ✓ Standard Colour: Textured White

#### **CLEANING AND CARE**

- ✓ Removable
- ✓ Spot Clean

#### **COMPLIANCE**

- ✓ Not suitable for incontinent patients
- ✓ Material manufactured in Australia
- ✓ High Quality materials and construction

#### **CONSTRUCTION**

- ✓ 180° / two-sided integrated zipper

#### **INTEGRATED ZIPPER**

- ✓ 180° / Two-Sided Zipper
- ✓ Allows easy cover removal
- ✓ Robust and durable

# Advantiflex Pressure Care Covers

## Advantiflex Pressure Care Cover



### ADVANTIFLEX PU1100 POLYURETHANE PRESSURE CARE MATERIAL

- ✓ High Performance, Single Sided Polyurethane
- ✓ 4-Way/Bi-Directional stretch for shear protection, immersion & envelopment
- ✓ Vapour permeable and breathable
- ✓ Resistant to patient body fluids
- ✓ Flexible and gentle to the skin
- ✓ Standard Colour: Blue

### CLEANING AND CARE

- ✓ 1,000ppm disinfection chemical suitability
- ✓ Wipe clean
- ✓ Stain Resistant
- ✓ Anti-microbial protected



### COMPLIANCE

- ✓ Fire retardant, meets BS 6807 ignition source 5 and BS 7175 ignition source 5 standards
- ✓ Anti-microbial protected
- ✓ All seams high frequency welded, no exposed sewn seams
- ✓ Meets and Exceeds Facility Requirement
- ✓ Materials manufactured in Belgium, to Forté specification

### CONSTRUCTION

- ✓ All seams high frequency sealed & welded
- ✓ 180° / two-sided integrated zipper
- ✓ Waterfall Fluid Penetration Flap
- ✓ TGA Compliant Product Labelling

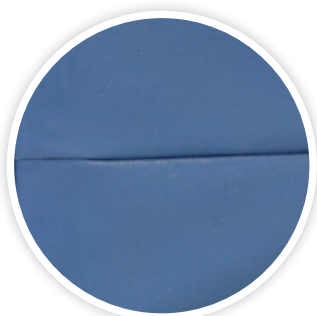


### INTEGRATED ZIPPER

- ✓ 180° / Two-Sided Zipper
- ✓ Allows easy cover removal
- ✓ Robust and durable
- ✓ High frequency welded attachment for optimal protection against fluid ingress

### WATERFALL ZIPPER PROTECTION FLAP

- ✓ Provides additional protection against fluid ingress through zipper
- ✓ Meets infection control guidelines



### HIGH FREQUENCY SEALED AND WELDED SEAMS

- ✓ Electromagnetically fused seams protecting against risk of penetration of fluid
- ✓ Meets and exceeds infection control requirements
- ✓ Reinforced with additional heavy duty stitching at stress points
- ✓ 100% Sealed to prevent ingress of fluid or infection

# Advantiflex Classic Pressure Care Cover



## ADVANTIFLEX PU1100 POLYURETHANE PRESSURE CARE UPPER MATERIAL

- ✓ High Performance, Single Sided Polyurethane
- ✓ 4-Way/Bi-Directional stretch for shear protection, immersion & envelopment
- ✓ Vapour permeable and breathable
- ✓ Resistant to patient body fluids
- ✓ Flexible and gentle to the skin
- ✓ Standard Colour: Blue



## HEAVY DUTY PVC1100 BASE MATERIAL

- ✓ 100% Waterproof
- ✓ Heavy Duty, Robust & Hardwearing
- ✓ Protects foam core against the bed base
- ✓ Provides exceptional conformity and profiling to medical bed surfaces
- ✓ Reduces shearing forces by sliding against bed base as the bed base profiles
- ✓ Superior resistance to cleaning agents
- ✓ Standard Colour: Grey

## CLEANING AND CARE

- ✓ 1,000ppm disinfection chemical suitability
- ✓ Wipe clean
- ✓ Stain Resistant
- ✓ Anti-microbial protected



## COMPLIANCE

- ✓ Fire retardant, meets BS 6807 ignition source 5 and BS 7175 ignition source 5 standards
- ✓ Anti-microbial protected
- ✓ All seams high frequency welded, no exposed sewn seams
- ✓ Meets and Exceeds Facility Requirement
- ✓ Materials manufactured in Belgium, to Forté specification

## CONSTRUCTION

- ✓ All seams high frequency sealed & welded
- ✓ 180° / two-sided integrated zipper
- ✓ Waterfall Fluid Penetration Flap
- ✓ TGA Compliant Product Labelling

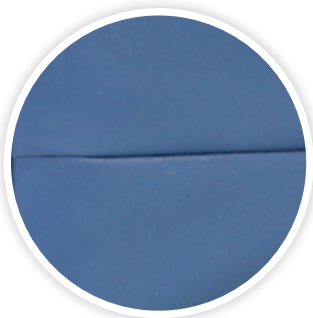


## INTEGRATED ZIPPER

- ✓ 180° / Two-Sided Zipper
- ✓ Allows easy cover removal
- ✓ Robust and durable
- ✓ High frequency welded attachment for optimal protection against fluid ingress

## WATERFALL ZIPPER PROTECTION FLAP

- ✓ Protects additional protection against fluid ingress through zipper
- ✓ Meets infection control guidelines



## HIGH FREQUENCY SEALED AND WELDED SEAMS

- ✓ Electromagnetically fused seams protecting against risk of penetration of fluid
- ✓ Meets and exceeds infection control requirements
- ✓ Reinforced with additional heavy duty stitching at stress points
- ✓ 100% Sealed to prevent ingress of fluid or infection

# Premiflex Pressure Care Covers



## Premiflex Classic Premium Pressure Care Cover

The Forté Premiflex Classic Cover Range builds on the attributes of the Premiflex range and delivers superior infection control and overall mattress longevity. Acute care environments often result in prolonged exposure to high humidity and moisture as result of reduced mattress rest periods and higher utilisation. Premiflex Ultra Breathe technology increases the ability of the cover to allow moisture to escape and consequently reducing condensation and formation of contaminants within the cover. Benefits of this include less risk of mould developing and greater foam performance.

## Premiflex Ultra Premium Breathe Pressure Care Cover

The Forté Premiflex Ultra Breathe Covers Range builds on the attributes of the Premiflex range and delivers superior infection control and overall mattress longevity. Acute care environments often result in prolonged exposure to high humidity and moisture as result of reduced mattress rest periods and higher utilisation. Premiflex Ultra Breathe technology increases the ability of the cover to allow moisture to escape and consequently reducing condensation and formation of contaminants within the cover. Benefits of this include less risk of mould developing and greater foam performance.

### CLEANING AND CARE

- ✓ 10,000ppm disinfection chemical suitability
- ✓ Wipe clean
- ✓ Stain Resistant
- ✓ Anti-microbial protected

### COMPLIANCE

- ✓ Fire retardant, meets BS 6807 ignition source 5 and BS 7175 ignition source 5 standards
- ✓ Anti-microbial protected
- ✓ All seams high frequency welded, no exposed sewn seams
- ✓ Meets and Exceeds Facility Requirement
- ✓ Material manufactured in Belgium, to Forté specification





## PREMIFLEX PREMIUM PFP1100 POLYURETHANE PRESSURE CARE UPPER MATERIAL

- ✓ Ultra & Classic
- ✓ High Performance, Single Sided Polyurethane
- ✓ 4-Way/Bi-Directional stretch for shear protection, immersion & envelopment
- ✓ Vapour permeable and breathable
- ✓ Resistant to patient body fluids
- ✓ Flexible and gentle to the skin
- ✓ Superior resistance to cleaning agents
- ✓ Standard Colour: Purple/Grape



## DOUBLE COATED POLYURETHANE BASE

- ✓ Ultra
- ✓ Durable
- ✓ Protects foam core against the bed base
- ✓ Provides exceptional conformity and profiling to medical bed surfaces
- ✓ Superior resistance to cleaning agents
- ✓ Standard Colour: Deep Grey

## HEAVY DUTY PVC1120 BASE MATERIAL

- ✓ Classic
- ✓ 100% Waterproof
- ✓ Heavy Duty, Robust & Hardwearing
- ✓ Protects foam core against the bed base
- ✓ Provides exceptional conformity and profiling to medical bed surfaces
- ✓ Reduces shearing forces by sliding against bed base as the bed base profiles
- ✓ Superior resistance to cleaning agents
- ✓ Standard Colour: Grey



## FULL VAPOUR PERMEABILITY

- ✓ Ultra
- ✓ Allows vapour to travel right through the cover at a controlled rate
- ✓ Reduces risk of internal infection entrapment and optimises core micro-climate

## CONSTRUCTION

- ✓ All seams high frequency sealed & welded
- ✓ 180° / two-sided integrated zipper
- ✓ Waterfall Fluid Penetration Flap
- ✓ TGA Compliant Product Labelling



## INTEGRATED ZIPPER

- ✓ 180° / Two-Sided Zipper
- ✓ Allows easy cover removal
- ✓ Robust and durable
- ✓ High frequency welded attachment for optimal protection against fluid ingress

## WATERFALL ZIPPER PROTECTION FLAP

- ✓ Provides additional protection against fluid ingress through zipper
- ✓ Meets infection control guidelines



## HIGH FREQUENCY SEALED AND WELDED SEAMS

- ✓ Electromagnetically fused seams protecting against risk of penetration of fluid
- ✓ Meets and exceeds infection control requirements
- ✓ Reinforced with additional heavy duty stitching at stress points
- ✓ 100% Sealed to prevent ingress of fluid or infection