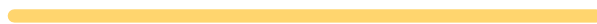


MEDICAL MATTRESS EXPERTS



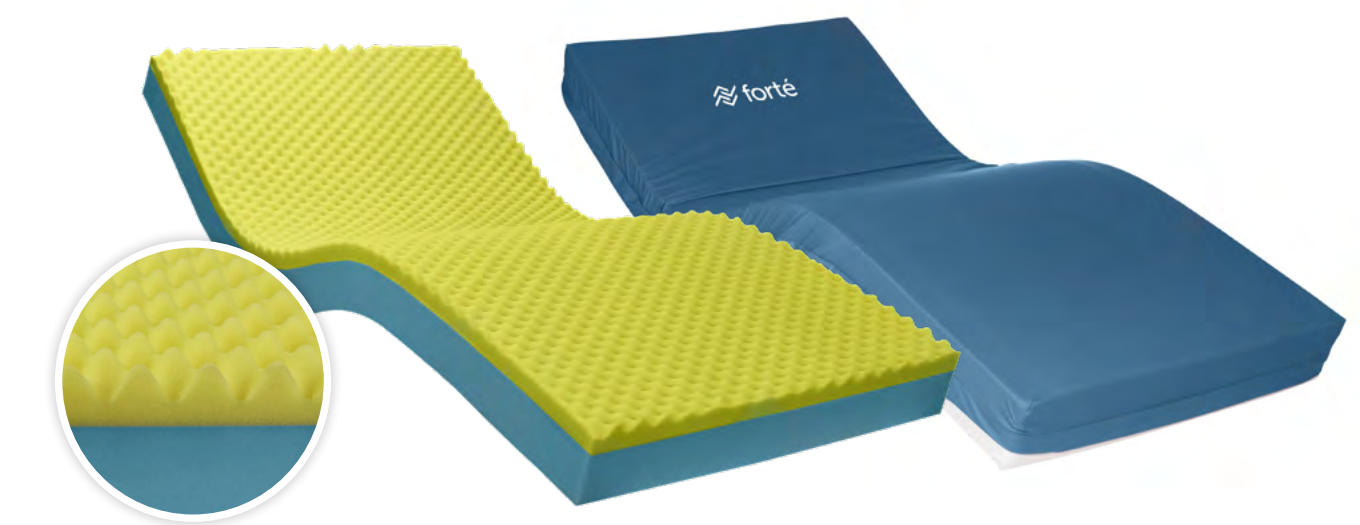
The Merit is ideal for low care applications where support and comfort are required.

Often used in bespoke situations including high humidity conditions and custom size home care beds, the Merit ensures quality rest and care. The Merit range serves as an effective support surface for patients that require high stability for positioning and transfer. The Merit is also an excellent choice for short term hire applications where durability is a must.



# Merit 2A

Premium Convoluted Medical Mattress



**PREMIUM GRADE CONVOLUTE UPPER:**

- ✓ Comfortable, low tension interface for partial immersion.
- ✓ Improves air circulation and micro-climate.

**DELUXE FOUNDATION LAYER**

- ✓ Delivers postural support
- ✓ Provides protection against ‘bottoming-out’ during transfer, repositioning and whilst in the inclined/fowler position
- ✓ Provides exceptional comfort, support for repositioning and patient care

**SHEAR & FRICTION:**



**REPOSITIONING:**



**INFECTION CONTROL:**



**FIRMNESS:**



**MOISTURE & MICROCLIMATE:**



**PERFORMANCE & LONGEVITY:**



**MOBILITY & FUNCTION:**



**PRESSURE CARE RATING:**

**LOW RISK**

## / Merit 2A

CODE	DIMENSIONS (MM)	SIZE
2AS1000	1980x880x150	Single
2ASL1000	2030x880x150	Single, Long
2AKS1000	1980x1050x150	King Single
2AKSL1000	2030x1050x150	King Single, Long
2AEW1000	1980x1150x150	Extra-Wide
2AEWL1000	2030x1150x150	Extra-Wide, Long
2AD1000	1980x1350x150	Double
2ADL1000	2030x1350x150	Double, Long
2AQ1000	1980x1530x150	Queen
2AQL1000	2030x1530x150	Queen, Long
2AK1000	1980x1850x150	King
2AKL1000	2030x1850x150	King, Long
	Customisable	CAN BE MADE TO SUIT ANY BED
THERAPEUTIC WEIGHT RANGE*		150KG
APPLICATIONS		✓ AMBULANT PATIENTS   ✓ AGED CARE   ✓ HOME CARE
WARRANTY**		5-YEAR FOAM CORE WARRANTY 2-YEAR COVER WARRANTY
STANDARD COVER TYPE		ADVANTIFLEX CLASSIC

# Advantiflex Classic

## Pressure Care Cover



### **ADVANTIFLEX PU1100 POLYURETHANE PRESSURE CARE UPPER MATERIAL**

- ✓ High Performance, Single Sided Polyurethane
- ✓ 4-Way/Bi-Directional stretch for shear protection, immersion & envelopment
- ✓ Vapour permeable and breathable
- ✓ Resistant to patient body fluids
- ✓ Flexible and gentle to the skin
- ✓ Standard Colour: Blue

### **HEAVY DUTY PVC1100 BASE MATERIAL**

- ✓ 100% Waterproof
- ✓ Heavy Duty, Robust & Hardwearing
- ✓ Protects foam core against the bed base
- ✓ Provides exceptional conformity and profiling to medical bed surfaces
- ✓ Reduces shearing forces by sliding against bed base as the bed base profiles
- ✓ Superior resistance to cleaning agents
- ✓ Standard Colour: Grey

### **CLEANING AND CARE**

- ✓ 1,000ppm disinfection chemical suitability
- ✓ Wipe clean
- ✓ Stain Resistant
- ✓ Anti-microbial protected

### **COMPLIANCE**

- ✓ Fire retardant, meets BS 6807 ignition source 5 and BS 7175 ignition source 5 standards
- ✓ Anti-microbial protected
- ✓ All seams high frequency welded, no exposed sewn seams
- ✓ Meets and Exceeds Facility Requirement
- ✓ Materials manufactured in Belgium, to Forté specification

### **CONSTRUCTION**

- ✓ All seams high frequency sealed & welded
- ✓ 180° / two-sided integrated zipper
- ✓ Waterfall Fluid Penetration Flap
- ✓ TGA Compliant Product Labelling

### **INTEGRATED ZIPPER**

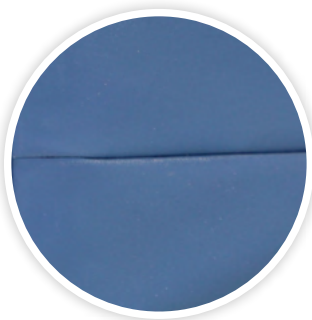
- ✓ 180° / Two-Sided Zipper
- ✓ Allows easy cover removal
- ✓ Robust and durable
- ✓ High frequency welded attachment for optimal protection against fluid ingress

### **WATERFALL ZIPPER PROTECTION FLAP**

- ✓ Provides additional protection against fluid ingress through zipper
- ✓ Meets infection control guidelines

### **HIGH FREQUENCY SEALED AND WELDED SEAMS**

- ✓ Electromagnetically fused seams protecting against risk of penetration of fluid
- ✓ Meets and exceeds infection control requirements
- ✓ Reinforced with additional heavy duty stitching at stress points
- ✓ 100% Sealed to prevent ingress of fluid or infection



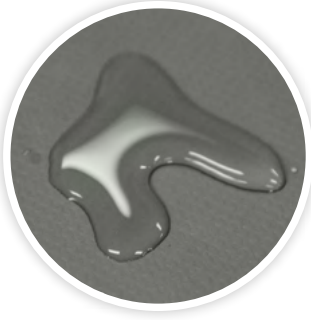


# Heavy Duty PVC Cover



## HEAVY DUTY PVC1100 MATERIAL

- ✓ 100% Waterproof
- ✓ Heavy Duty, Robust & Hardwearing
- ✓ Protects foam core against the bed base
- ✓ Provides exceptional conformity and profiling to medical bed surfaces
- ✓ Reduces shearing forces by sliding against bed base as the bed base profiles
- ✓ Superior resistance to cleaning agents
- ✓ Standard Colour: Grey



## CLEANING AND CARE

- ✓ 10,000ppm disinfection chemical suitability
- ✓ Wipe clean
- ✓ Stain Resistant
- ✓ Anti-microbial protected

## COMPLIANCE

- ✓ Fire retardant, meets BS 6807 ignition source 5 and BS 7175 ignition source 5 standards
- ✓ Anti-microbial protected
- ✓ All seams high frequency welded, no exposed sewn seams
- ✓ Meets and Exceeds Facility Requirement
- ✓ Material manufactured in Belgium, to Forté specification



## CONSTRUCTION

- ✓ All seams high frequency sealed & welded
- ✓ 180° / two-sided integrated zipper
- ✓ Waterfall Fluid Penetration Flap
- ✓ TGA Compliant Product Labelling

## INTEGRATED ZIPPER

- ✓ 180° / Two-Sided Zipper
- ✓ Allows easy cover removal
- ✓ Robust and durable
- ✓ High frequency welded attachment for optimal protection against fluid ingress

## WATERFALL ZIPPER PROTECTION FLAP

- ✓ Protects additional protection against fluid ingress through zipper
- ✓ Meets infection control guidelines



## HIGH FREQUENCY SEALED AND WELDED SEAMS

- ✓ Electromagnetically fused seams protecting against risk of penetration of fluid
- ✓ Meets and exceeds infection control requirements
- ✓ Reinforced with additional heavy duty stitching at stress points
- ✓ 100% Sealed to prevent ingress of fluid or infection