

MEDICAL MATTRESS EXPERTS



The Merit is ideal for low care applications where support and comfort are required.

Often used in bespoke situations including high humidity conditions and custom size home care beds, the Merit ensures quality rest and care. The Merit range serves as an effective support surface for patients that require high stability for positioning and transfer. The Merit is also an excellent choice for short term hire applications where durability is a must.



Merit 2H Medical Grade Mattress/Underlay



SUPPORTIVE FOAM CORE

- ✓ Quality foam
- ✓ Provides protection against 'bottoming-out' during transfer, repositioning and whilst in the inclined/fowler position
- ✓ Provides comfort & support for repositioning and patient care

SHEAR & FRICTION:



REPOSITIONING:



INFECTION CONTROL:



FIRMNESS:



MOISTURE & MICROCLIMATE:



PERFORMANCE & LONGEVITY:



MOBILITY & FUNCTION:



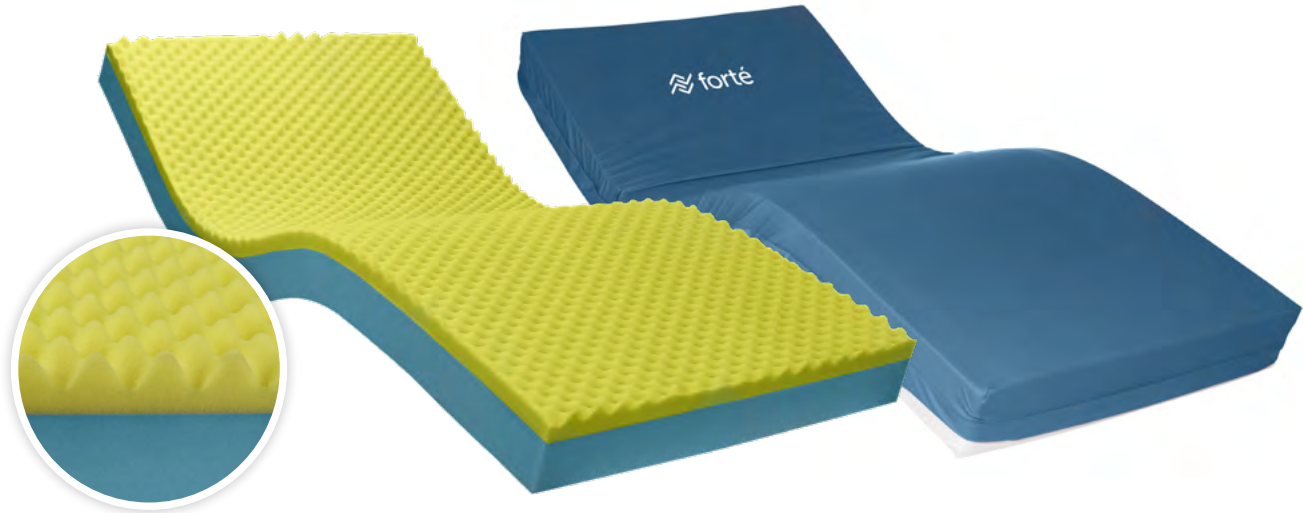
PRESSURE CARE RATING:

LOW RISK

/ Merit 2H

DIMENSIONS (MM)	SIZE	CODE (50MM HIGH)	CODE (100MM HIGH)	CODE (150MM HIGH)
1980x880	Single	2HS1000-50	2HS1000-100	2HS1000-150
2030x880	Single, Long	2HSL1000-50	2HSL1000-100	2HSL1000-150
1980x1050	King Single	2HKS1000-50	2HKS1000-100	2HKS1000-150
2030x1050	King Single, Long	2HKSL1000-50	2HKSL1000-100	2HKSL1000-150
1980x1150	Extra-Wide	2HEW1000-50	2HEW1000-100	2HEW1000-150
2030x1150	Extra-Wide, Long	2HEWL1000-50	2HEWL1000-100	2HEWL1000-150
1980x1350	Double	2HD1000-50	2HD1000-100	2HD1000-150
2030x1350	Double, Long	2HDL1000-50	2HDL1000-100	2HDL1000-150
1980x1530	Queen	2HQ1000-50	2HQ1000-100	2HQ1000-150
2030x1530	Queen, Long	2HQL1000-50	2HQL1000-100	2HQL1000-150
1980x1850	King	2HK1000-50	2HK1000-100	2HK1000-150
2030x1850	King, Long	2HKL1000-50	2HKL1000-100	2HKL1000-150
Customisable	CAN BE MADE TO SUIT ANY BED			
THERAPEUTIC WEIGHT RANGE*	150KG			
APPLICATIONS	✓ MATTRESS UNDERLAYS ✓ AGED CARE ✓ HOME CARE			
WARRANTY**	1-YEAR FOAM CORE WARRANTY 2-YEAR COVER WARRANTY			
STANDARD COVER TYPE	HEAVY DUTY PVC		ADVANTIFLEX	

Merit 2A Premium Convoluted Medical Mattress



PREMIUM GRADE CONVOLUTE UPPER:

- ✓ Comfortable, low tension interface for partial immersion.
- ✓ Improves air circulation and micro-climate.

DELUXE FOUNDATION LAYER

- ✓ Delivers postural support
- ✓ Provides protection against 'bottoming-out' during transfer, repositioning and whilst in the inclined/fowler position
- ✓ Provides exceptional comfort, support for repositioning and patient care

SHEAR & FRICTION:



REPOSITIONING:



INFECTION CONTROL:



FIRMNESS:



MOISTURE & MICROCLIMATE:



PERFORMANCE & LONGEVITY:



MOBILITY & FUNCTION:



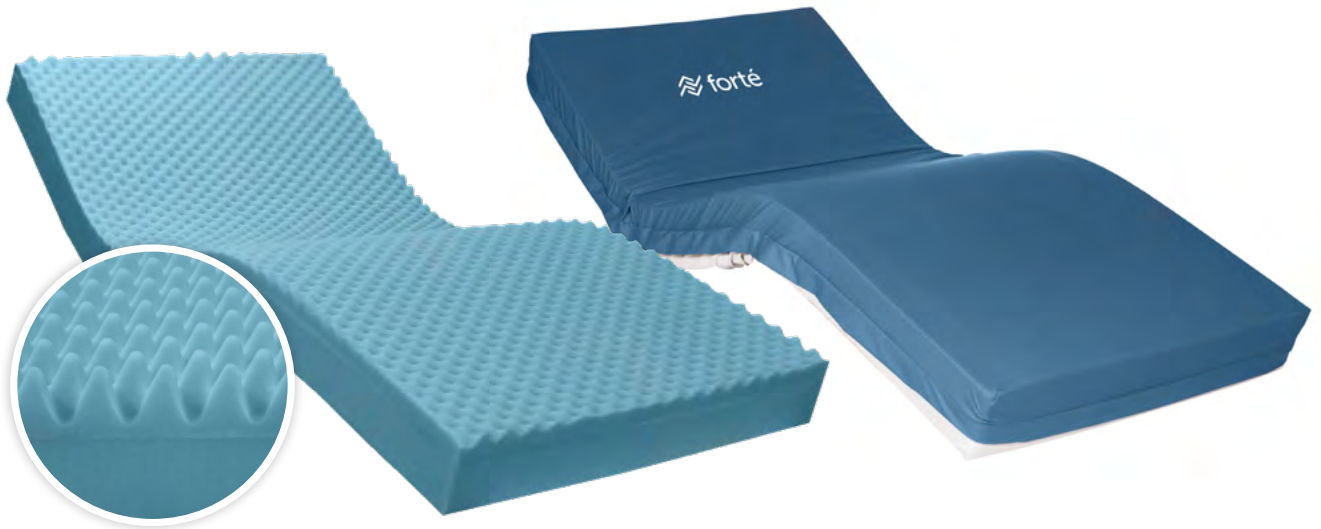
PRESSURE CARE RATING:

LOW RISK

/ Merit 2A

CODE	DIMENSIONS (MM)	SIZE
2AS1000	1980x880x150	Single
2ASL1000	2030x880x150	Single, Long
2AKS1000	1980x1050x150	King Single
2AKSL1000	2030x1050x150	King Single, Long
2AEW1000	1980x1150x150	Extra-Wide
2AEWL1000	2030x1150x150	Extra-Wide, Long
2AD1000	1980x1350x150	Double
2ADL1000	2030x1350x150	Double, Long
2AQ1000	1980x1530x150	Queen
2AQL1000	2030x1530x150	Queen, Long
2AK1000	1980x1850x150	King
2AKL1000	2030x1850x150	King, Long
	Customisable	CAN BE MADE TO SUIT ANY BED
THERAPEUTIC WEIGHT RANGE*	150KG	
APPLICATIONS	✓ AMBULANT PATIENTS ✓ AGED CARE ✓ HOME CARE	
WARRANTY**	5-YEAR FOAM CORE WARRANTY 2-YEAR COVER WARRANTY	
STANDARD COVER TYPE	ADVANTIFLEX CLASSIC	

Merit 2B Deluxe Convoluted Medical Mattress



DELUXE GRADE CONVOLUTE UPPER:

- ✓ Comfortable, low tension interface for partial immersion.
- ✓ Improves air circulation and micro-climate.

DELUXE FOUNDATION LAYER

- ✓ Delivers postural support
- ✓ Provides protection against 'bottoming-out' during transfer, repositioning and whilst in the inclined/fowler position
- ✓ Provides exceptional comfort, support for repositioning and patient care
- ✓ Enhances performance and longevity

SHEAR & FRICTION:



REPOSITIONING:



INFECTION CONTROL:



FIRMNESS:



MOISTURE & MICROCLIMATE:



PERFORMANCE & LONGEVITY:



MOBILITY & FUNCTION:



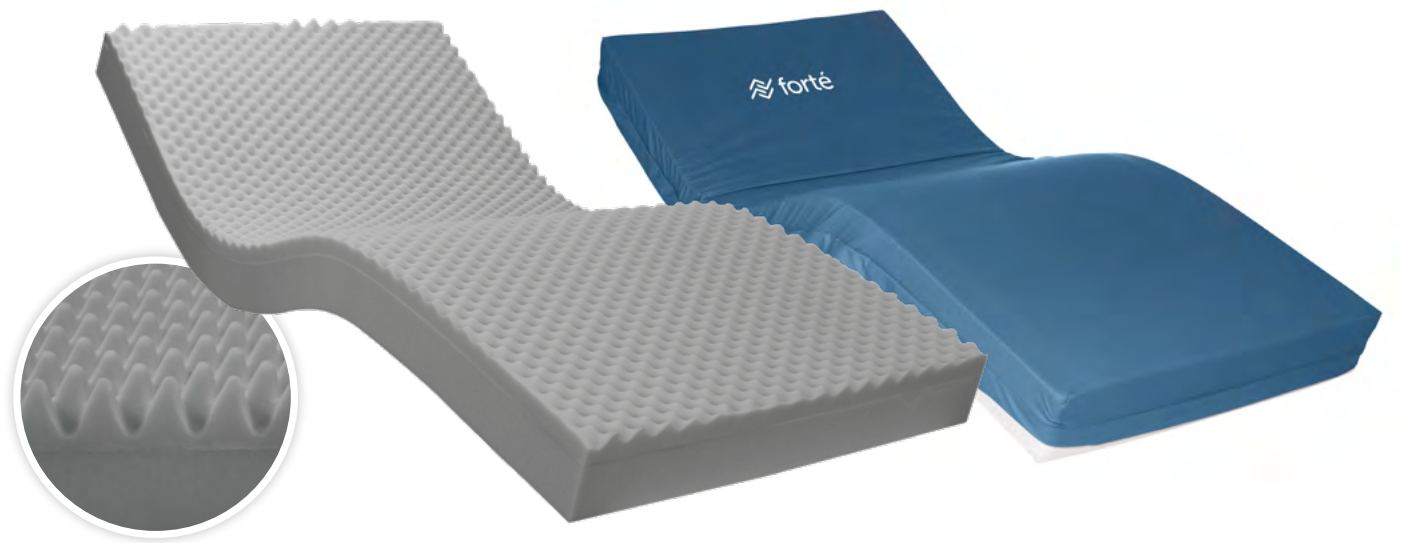
PRESSURE CARE RATING:

LOW RISK

/ Merit 2B

CODE	DIMENSIONS (MM)	SIZE
2BS1000	1980x880x150	Single
2BSL1000	2030x880x150	Single, Long
2BKS1000	1980x1050x150	King Single
2BKSL1000	2030x1050x150	King Single, Long
2BEW1000	1980x1150x150	Extra-Wide
2BEWL1000	2030x1150x150	Extra-Wide, Long
2BD1000	1980x1350x150	Double
2BDL1000	2030x1350x150	Double, Long
2BQ1000	1980x1530x150	Queen
2BQL1000	2030x1530x150	Queen, Long
2BK1000	1980x1850x150	King
2BKL1000	2030x1850x150	King, Long
	Customisable	CAN BE MADE TO SUIT ANY BED
THERAPEUTIC WEIGHT RANGE*	150KG	
APPLICATIONS	✓ AMBULANT PATIENTS ✓ AGED CARE ✓ HOME CARE	
WARRANTY**	3-YEAR FOAM CORE WARRANTY 2-YEAR COVER WARRANTY	
STANDARD COVER TYPE	ADVANTIFLEX CLASSIC	

Merit 2D Convoluted Medical Mattress



STANDARD GRADE CONVOLUTE UPPER

- ✓ Comfortable, low tension interface for partial immersion.
- ✓ Improves air circulation and micro-climate.

FOUNDATION LAYER

- ✓ Delivers postural support
- ✓ Provides protection against 'bottoming-out' during transfer, repositioning and whilst in the inclined/fowler position
- ✓ Provides exceptional comfort, support for repositioning and patient care
- ✓ Enhances performance and longevity

SHEAR & FRICTION:



REPOSITIONING:



INFECTION CONTROL:



FIRMNESS:



MOISTURE & MICROCLIMATE:



PERFORMANCE & LONGEVITY:



MOBILITY & FUNCTION:



PRESSURE CARE RATING:

LOW RISK

/ Merit 2D

CODE	DIMENSIONS (MM)	SIZE
2DS1000	1980x880x150	Single
2DSL1000	2030x880x150	Single, Long
2DKS1000	1980x1050x150	King Single
2DKSL1000	2030x1050x150	King Single, Long
2DEW1000	1980x1150x150	Extra-Wide
2DEWL1000	2030x1150x150	Extra-Wide, Long
2DD1000	1980x1350x150	Double
2DDL1000	2030x1350x150	Double, Long
2DQ1000	1980x1530x150	Queen
2DQL1000	2030x1530x150	Queen, Long
2DK1000	1980x1850x150	King
2DKL1000	2030x1850x150	King, Long
	Customisable	CAN BE MADE TO SUIT ANY BED
THERAPEUTIC WEIGHT RANGE*	135KG	
APPLICATIONS	✓ AMBULANT PATIENTS ✓ AGED CARE ✓ HOME CARE	
WARRANTY**	1-YEAR FOAM CORE WARRANTY 2-YEAR COVER WARRANTY	
STANDARD COVER TYPE	ADVANTIFLEX CLASSIC	

Advantiflex Pressure Care Cover



ADVANTIFLEX PU1100 POLYURETHANE PRESSURE CARE MATERIAL

- ✓ High Performance, Single Sided Polyurethane
- ✓ 4-Way/Bi-Directional stretch for shear protection, immersion & envelopment
- ✓ Vapour permeable and breathable
- ✓ Resistant to patient body fluids
- ✓ Flexible and gentle to the skin
- ✓ Standard Colour: Blue

CLEANING AND CARE

- ✓ 1,000ppm disinfection chemical suitability
- ✓ Wipe clean
- ✓ Stain Resistant
- ✓ Anti-microbial protected



COMPLIANCE

- ✓ Fire retardant, meets BS 6807 ignition source 5 and BS 7175 ignition source 5 standards
- ✓ Anti-microbial protected
- ✓ All seams high frequency welded, no exposed sewn seams
- ✓ Meets and Exceeds Facility Requirement
- ✓ Materials manufactured in Belgium, to Forté specification

CONSTRUCTION

- ✓ All seams high frequency sealed & welded
- ✓ 180° / two-sided integrated zipper
- ✓ Waterfall Fluid Penetration Flap
- ✓ TGA Compliant Product Labelling



INTEGRATED ZIPPER

- ✓ 180° / Two-Sided Zipper
- ✓ Allows easy cover removal
- ✓ Robust and durable
- ✓ High frequency welded attachment for optimal protection against fluid ingress

WATERFALL ZIPPER PROTECTION FLAP

- ✓ Provides additional protection against fluid ingress through zipper
- ✓ Meets infection control guidelines



HIGH FREQUENCY SEALED AND WELDED SEAMS

- ✓ Electromagnetically fused seams protecting against risk of penetration of fluid
- ✓ Meets and exceeds infection control requirements
- ✓ Reinforced with additional heavy duty stitching at stress points
- ✓ 100% Sealed to prevent ingress of fluid or infection

Advantiflex Classic Pressure Care Cover



ADVANTIFLEX PU1100 POLYURETHANE PRESSURE CARE UPPER MATERIAL

- ✓ High Performance, Single Sided Polyurethane
- ✓ 4-Way/Bi-Directional stretch for shear protection, immersion & envelopment
- ✓ Vapour permeable and breathable
- ✓ Resistant to patient body fluids
- ✓ Flexible and gentle to the skin
- ✓ Standard Colour: Blue

HEAVY DUTY PVC1100 BASE MATERIAL

- ✓ 100% Waterproof
- ✓ Heavy Duty, Robust & Hardwearing
- ✓ Protects foam core against the bed base
- ✓ Provides exceptional conformity and profiling to medical bed surfaces
- ✓ Reduces shearing forces by sliding against bed base as the bed base profiles
- ✓ Superior resistance to cleaning agents
- ✓ Standard Colour: Grey

CLEANING AND CARE

- ✓ 1,000ppm disinfection chemical suitability
- ✓ Wipe clean
- ✓ Stain Resistant
- ✓ Anti-microbial protected

COMPLIANCE

- ✓ Fire retardant, meets BS 6807 ignition source 5 and BS 7175 ignition source 5 standards
- ✓ Anti-microbial protected
- ✓ All seams high frequency welded, no exposed sewn seams
- ✓ Meets and Exceeds Facility Requirement
- ✓ Materials manufactured in Belgium, to Forté specification

CONSTRUCTION

- ✓ All seams high frequency sealed & welded
- ✓ 180° / two-sided integrated zipper
- ✓ Waterfall Fluid Penetration Flap
- ✓ TGA Compliant Product Labelling

INTEGRATED ZIPPER

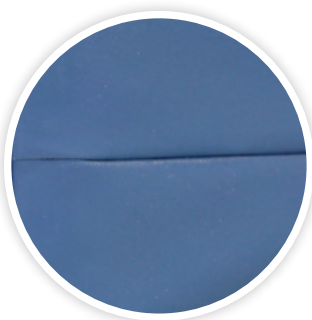
- ✓ 180° / Two-Sided Zipper
- ✓ Allows easy cover removal
- ✓ Robust and durable
- ✓ High frequency welded attachment for optimal protection against fluid ingress

WATERFALL ZIPPER PROTECTION FLAP

- ✓ Provides additional protection against fluid ingress through zipper
- ✓ Meets infection control guidelines

HIGH FREQUENCY SEALED AND WELDED SEAMS

- ✓ Electromagnetically fused seams protecting against risk of penetration of fluid
- ✓ Meets and exceeds infection control requirements
- ✓ Reinforced with additional heavy duty stitching at stress points
- ✓ 100% Sealed to prevent ingress of fluid or infection



Heavy Duty PVC Cover



HEAVY DUTY PVC1100 MATERIAL

- ✓ 100% Waterproof
- ✓ Heavy Duty, Robust & Hardwearing
- ✓ Protects foam core against the bed base
- ✓ Provides exceptional conformity and profiling to medical bed surfaces
- ✓ Reduces shearing forces by sliding against bed base as the bed base profiles
- ✓ Superior resistance to cleaning agents
- ✓ Standard Colour: Grey

CLEANING AND CARE

- ✓ 10,000ppm disinfection chemical suitability
- ✓ Wipe clean
- ✓ Stain Resistant
- ✓ Anti-microbial protected



COMPLIANCE

- ✓ Fire retardant, meets BS 6807 ignition source 5 and BS 7175 ignition source 5 standards
- ✓ Anti-microbial protected
- ✓ All seams high frequency welded, no exposed sewn seams
- ✓ Meets and Exceeds Facility Requirement
- ✓ Material manufactured in Belgium, to Forté specification

CONSTRUCTION

- ✓ All seams high frequency sealed & welded
- ✓ 180° / two-sided integrated zipper
- ✓ Waterfall Fluid Penetration Flap
- ✓ TGA Compliant Product Labelling



INTEGRATED ZIPPER

- ✓ 180° / Two-Sided Zipper
- ✓ Allows easy cover removal
- ✓ Robust and durable
- ✓ High frequency welded attachment for optimal protection against fluid ingress

WATERFALL ZIPPER PROTECTION FLAP

- ✓ Provides additional protection against fluid ingress through zipper
- ✓ Meets infection control guidelines



HIGH FREQUENCY SEALED AND WELDED SEAMS

- ✓ Electromagnetically fused seams protecting against risk of penetration of fluid
- ✓ Meets and exceeds infection control requirements
- ✓ Reinforced with additional heavy duty stitching at stress points
- ✓ 100% Sealed to prevent ingress of fluid or infection