

MEDICAL MATTRESS EXPERTS



The Icon Medium Risk Pressure Care Mattress Range provides true leadership in static pressure care in a preventative setting. Tried and trusted in facilities nation-wide, the Icon range combines outstanding durability, a high standard and consistency of care and excellent value. An extensive variety of configurations are available providing for a wide range of patient needs and requirements.



# Icon Medical Mattress Characteristics



**EXCELLENT  
IMMERSION**



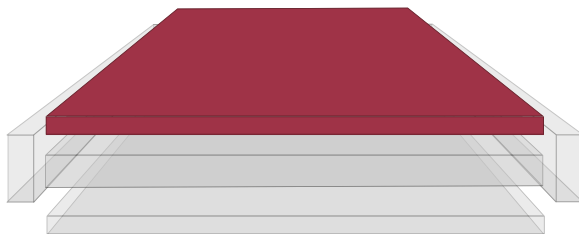
**ANATOMICAL  
SUPPORT**



**FIRM  
FOUNDATION**



**FALLS  
PROTECTION**



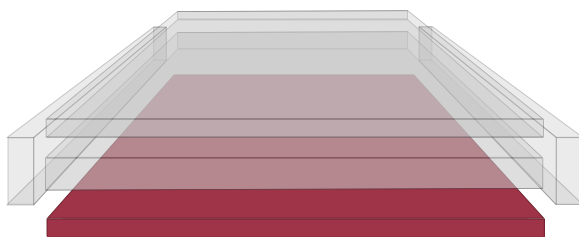
## **AIROFORM IMMERSION INTERFACE**

- ✓ Envelops 'bony prominences'
- ✓ Increases contact between surface and patient, dispersing and equalizing contact pressure
- ✓ Provides excellent conformity to individual patient body profiles



## **ANATOMICAL SUPPORT REGION**

- ✓ Provides additional immersion and envelopment
- ✓ Provides postural support for patient comfort
- ✓ Resilient to optimize function, mobility and repositioning



## **FIRM FOUNDATION AND BASE SUPPORT REGION**

- ✓ Protects patient from 'bottoming-out' whilst in seated/semi-fowler/fowler position
- ✓ Provides enhanced support for repositioning and transfer
- ✓ Assists in primary care

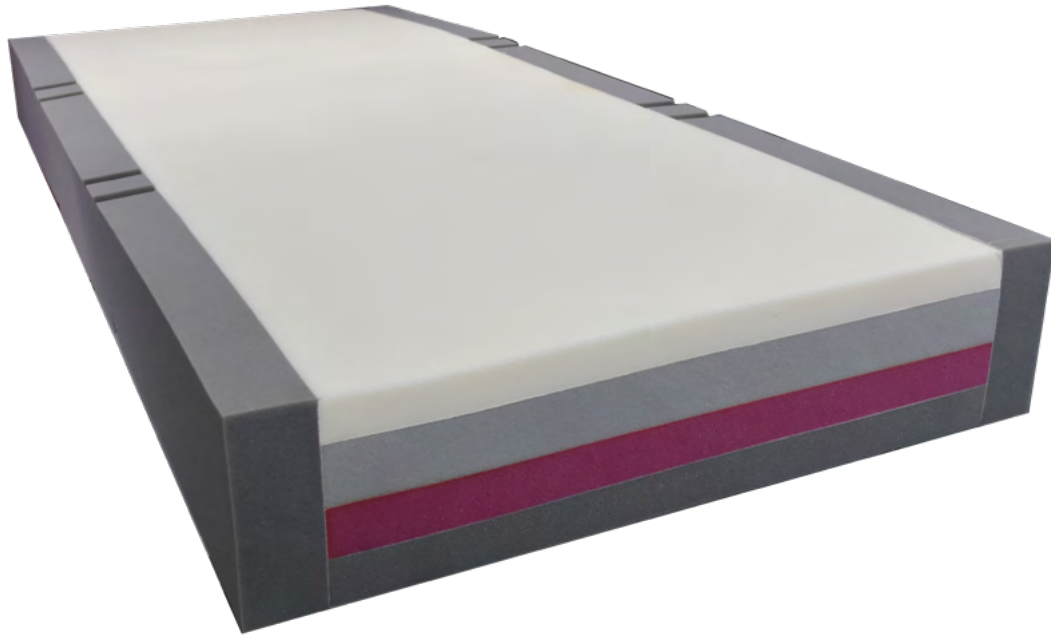


## **INTEGRATED STRENGTHENED SIDES**

- ✓ Provide lateral stability and reduce falls risk
- ✓ Support patient transfer and ingress/egress
- ✓ Assist primary care, provides caregivers a firm edge for support for repositioning
- ✓ Protects patient from edge of bed surface

# Icon I6 Plush

4-Layered Premium Luxury Medium Risk Pressure Care Mattress



**SHEAR & FRICTION:**



**REPOSITIONING:**



**INFECTION CONTROL:**



**FIRMNESS:**



**MOISTURE & MICROCLIMATE:**



**PERFORMANCE & LONGEVITY:**



**MOBILITY & FUNCTION:**



**PRESSURE CARE RATING:**

**MEDIUM RISK**

## / Icon I6 Plush

CODE	DIMENSIONS (MM)	SIZE
I6PS2000	1980x880x200	Single
I6PSL2000	2030x880x200	Single, Long
I6PKS2000	1980x1050x200	King Single
I6PKSL2000	2030x1050x200	King Single, Long
I6PEW2000	1980x1150x200	Extra-Wide
I6PEWL2000	2030x1150x200	Extra-Wide, Long
I6PD2000	1980x1350x200	Double
I6PDL2000	2030x1350x200	Double, Long
I6PQ2000	1980x1530x200	Queen
I6PQL2000	2030x1530x200	Queen, Long
I6PK2000	1980x1850x200	King
I6PKL2000	2030x1850x200	King, Long
	Customisable	CAN BE MADE TO SUIT ANY BED
<b>THERAPEUTIC WEIGHT RANGE*</b>	30-200KG	
<b>APPLICATIONS</b>	<input checked="" type="checkbox"/> HOSPITAL WARDS <input checked="" type="checkbox"/> AGED CARE <input checked="" type="checkbox"/> HOME CARE	
<b>WARRANTY</b>	5-YEAR FOAM CORE WARRANTY 2-YEAR COVER WARRANTY	
<b>STANDARD COVER TYPE</b>	ADVANTIFLEX CLASSIC	

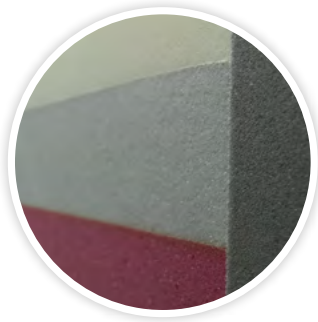
# Features

---



## AIROFORM MEMORY IMMERSION INTERFACE LAYER - EXTRA-SOFT

- ✓ High Temperature Stability to deliver consistent immersion, performance and comfort
- ✓ Maximises Patient contact with Support Surfaces Providing Pressure Redistribution
- ✓ Alleviates localised pressure points
- ✓ Depth calibrated to maximise functionality and patient mobility
- ✓ Visco-elastic/Memory Foam cell structure provides low-shear surface
- ✓ Firmness: Extra-Soft



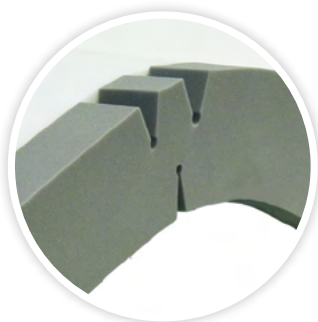
## ULTRA-HIGH PERFORMANCE SECONDARY LAYER

- ✓ Soft to Allow Additional Immersion
- ✓ High Responsiveness to Support Repositioning/Patient Transfer
- ✓ Open-Cell, Breathable Foam Technology
- ✓ Provides Excellent Anatomical Support



## DUAL PREMIUM FIRM FOUNDATION SUPPORT FOAMS

- ✓ Hospital Grade, Designed to Perform within High Humidity Conditions
- ✓ Protects the Patient Against Bottoming Out in Sacral Region
- ✓ Provides Excellent Anatomical Support
- ✓ Provides protection against 'bottoming-out' during transfer, repositioning and whilst in the inclined/fowler position
- ✓ Provides exceptional comfort, support for repositioning and patient care



## HINGED STRENGTHENED SIDES

- ✓ Increase lateral stability of support surface
- ✓ Improves patient safety and encourages central patient positioning
- ✓ Make patient transfers easier
- ✓ Unique hinge profile reduces foam fatigue and allow mattress to easily conform to varied bed positions
- ✓ Enables ease of primary patient care

# Luxury Quilted Cotton Cover

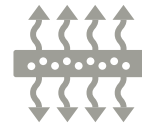
Open weave, breathable pressure care cover which looks and feels comparable to a luxury conventional residential mattress. 4-Way Stretch, anti-shearing, conforming open weave fabric compliments the multi-tiered foam structure offering pressure redistribution, immersion and envelopment. High breathability aids in microclimate control - encouraging air circulation which promotes health microclimate conditions at the skin interface and provides comfort especially to hot sleepers.



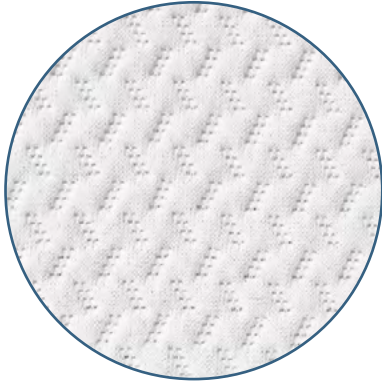
High durability



Excellent stretch



Breathable/  
vapour permeable



#### **LUXURY QUILTED QC1000 MATERIAL**

- ✓ Excellent breathability - open weave structure allows cooler sleep and reduces heat related sweating & discomfort
- ✓ 4-Way stretch preventing hammocking and stretching beneath bony regions
- ✓ Anatomically contouring - compliments immersion, envelopment and pressure distribution within mattress
- ✓ Anti-Shearing and Anti-Friction for protection of vulnerable skin
- ✓ High Quality, Luxury Comfort
- ✓ Standard Colour: Textured White

#### **CLEANING AND CARE**

- ✓ Removable
- ✓ Spot Clean

#### **COMPLIANCE**

- ✓ Not suitable for incontinent patients
- ✓ Material manufactured in Australia
- ✓ High Quality materials and construction

#### **CONSTRUCTION**

- ✓ 180° / two-sided integrated zipper

#### **INTEGRATED ZIPPER**

- ✓ 180° / Two-Sided Zipper
- ✓ Allows easy cover removal
- ✓ Robust and durable

# Advantiflex Pressure Care Covers

## Advantiflex Pressure Care Cover



### ADVANTIFLEX PU1100 POLYURETHANE PRESSURE CARE MATERIAL

- ✓ High Performance, Single Sided Polyurethane
- ✓ 4-Way/Bi-Directional stretch for shear protection, immersion & envelopment
- ✓ Vapour permeable and breathable
- ✓ Resistant to patient body fluids
- ✓ Flexible and gentle to the skin
- ✓ Standard Colour: Blue

### CLEANING AND CARE

- ✓ 1,000ppm disinfection chemical suitability
- ✓ Wipe clean
- ✓ Stain Resistant
- ✓ Anti-microbial protected



### COMPLIANCE

- ✓ Fire retardant, meets BS 6807 ignition source 5 and BS 7175 ignition source 5 standards
- ✓ Anti-microbial protected
- ✓ All seams high frequency welded, no exposed sewn seams
- ✓ Meets and Exceeds Facility Requirement
- ✓ Materials manufactured in Belgium, to Forté specification

### CONSTRUCTION

- ✓ All seams high frequency sealed & welded
- ✓ 180° / two-sided integrated zipper
- ✓ Waterfall Fluid Penetration Flap
- ✓ TGA Compliant Product Labelling

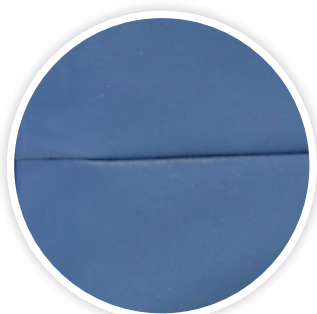


### INTEGRATED ZIPPER

- ✓ 180° / Two-Sided Zipper
- ✓ Allows easy cover removal
- ✓ Robust and durable
- ✓ High frequency welded attachment for optimal protection against fluid ingress

### WATERFALL ZIPPER PROTECTION FLAP

- ✓ Provides additional protection against fluid ingress through zipper
- ✓ Meets infection control guidelines



### HIGH FREQUENCY SEALED AND WELDED SEAMS

- ✓ Electromagnetically fused seams protecting against risk of penetration of fluid
- ✓ Meets and exceeds infection control requirements
- ✓ Reinforced with additional heavy duty stitching at stress points
- ✓ 100% Sealed to prevent ingress of fluid or infection



# Advantiflex Classic Pressure Care Cover



## ADVANTIFLEX PU1100 POLYURETHANE PRESSURE CARE UPPER MATERIAL

- ✓ High Performance, Single Sided Polyurethane
- ✓ 4-Way/Bi-Directional stretch for shear protection, immersion & envelopment
- ✓ Vapour permeable and breathable
- ✓ Resistant to patient body fluids
- ✓ Flexible and gentle to the skin
- ✓ Standard Colour: Blue



## HEAVY DUTY PVC1100 BASE MATERIAL

- ✓ 100% Waterproof
- ✓ Heavy Duty, Robust & Hardwearing
- ✓ Protects foam core against the bed base
- ✓ Provides exceptional conformity and profiling to medical bed surfaces
- ✓ Reduces shearing forces by sliding against bed base as the bed base profiles
- ✓ Superior resistance to cleaning agents
- ✓ Standard Colour: Grey

## CLEANING AND CARE

- ✓ 1,000ppm disinfection chemical suitability
- ✓ Wipe clean
- ✓ Stain Resistant
- ✓ Anti-microbial protected



## COMPLIANCE

- ✓ Fire retardant, meets BS 6807 ignition source 5 and BS 7175 ignition source 5 standards
- ✓ Anti-microbial protected
- ✓ All seams high frequency welded, no exposed sewn seams
- ✓ Meets and Exceeds Facility Requirement
- ✓ Materials manufactured in Belgium, to Forté specification

## CONSTRUCTION

- ✓ All seams high frequency sealed & welded
- ✓ 180° / two-sided integrated zipper
- ✓ Waterfall Fluid Penetration Flap
- ✓ TGA Compliant Product Labelling

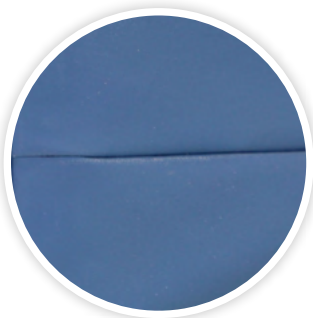


## INTEGRATED ZIPPER

- ✓ 180° / Two-Sided Zipper
- ✓ Allows easy cover removal
- ✓ Robust and durable
- ✓ High frequency welded attachment for optimal protection against fluid ingress

## WATERFALL ZIPPER PROTECTION FLAP

- ✓ Provides additional protection against fluid ingress through zipper
- ✓ Meets infection control guidelines



## HIGH FREQUENCY SEALED AND WELDED SEAMS

- ✓ Electromagnetically fused seams protecting against risk of penetration of fluid
- ✓ Meets and exceeds infection control requirements
- ✓ Reinforced with additional heavy duty stitching at stress points
- ✓ 100% Sealed to prevent ingress of fluid or infection