

MEDICAL MATTRESS EXPERTS



Forté Pressure Care Stretcher Support Surfaces deliver excellent patient comfort and uncompromised care. Utilising premium quality foam and material selected for their performance, the Forté Stretcher Support Surfaces provide consistent care in demanding medical environments and are customizable to suit any patient stretcher configuration, size and function. Forté Stretcher mattresses are specifically designed to provide sustained support and pressure injury prevention for a significantly longer period of time than the typical stretcher mattress. This is a benefit for situations where patients are kept on a stretcher waiting for a bed to become available for a longer period of time than anticipated.

Sovereign S21 High Care Immersion Pressure Care Stretcher Mattress

The Sovereign S2 Pressure Care Stretcher Support Surface is the optimal support surface for patient stretchers. The unique 4-zoned core suits a wide range of patient needs without compromise on comfort, pressure care or support.

The Sovereign S2 utilities premium quality, high performance foam for optimal longevity and patient comfort. The Sovereign S2 is custom made to suit any patient stretcher configuration, size, function or brand.



SHEAR & FRICTION:



REPOSITIONING:



INFECTION CONTROL:



FIRMNESS:



MOISTURE & MICROCLIMATE:



PERFORMANCE & LONGEVITY:



MOBILITY & FUNCTION:



PRESSURE CARE RATING:

MEDIUM RISK

/ Sovereign Stretcher S2

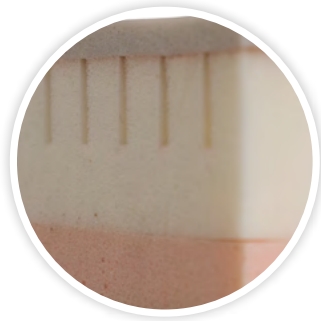
CODE	DIMENSIONS (MM)
S21000	1900x680x100
Customisable to suit any model and function of bed, stretcher or trolley	
THERAPEUTIC WEIGHT RANGE*	230KG
APPLICATIONS	✓ PRE-ADMISSION CLINICS ✓ THEATRES ✓ EMERGENCY DEPARTMENTS ✓ GENERAL PATIENT STRETCHERS
WARRANTY**	5-YEAR FOAM CORE WARRANTY 4-YEAR COVER WARRANTY
STANDARD COVER TYPE	DOUBLE COATED PREMIFLEX W/NON-SLIP PATCHES ON BASE

Features



AIROFORM RESPONSE IMMERSION INTERFACE LAYER

- ✓ A particularly responsive Ultra-High Performance elastic foam designed to optimise patient mobility, function and enhance repositioning
- ✓ Open-cell structure provides low-shear surface, good pressure redistribution, effective immersion, enhanced breathability and superior heat dissipation
- ✓ Alleviates localised pressure points
- ✓ Enhances contact with patient for distribution of interface pressure
- ✓ High temperature stability to deliver consistent immersion, performance and comfort
- ✓ Provides exceptional comfort
- ✓ Greatly reduces risk of impression marks on patient skin
- ✓ Firmness: Medium



VENTRAFLOW IMMERSION REGION

- ✓ Provides optimal conformity to individual patients body
- ✓ Helps relieve localised pressure on bony patient prominences
- ✓ Delivers excellent postural support and patient comfort
- ✓ Optimises internal core circulation and ventilation
- ✓ Zoned support regions



PREMIUM FIRM FOUNDATION LAYER

- ✓ Provides protection against 'bottoming-out' during transfer, repositioning and whilst in the inclined/fowler position
- ✓ Provides exceptional comfort, support for repositioning and patient care

