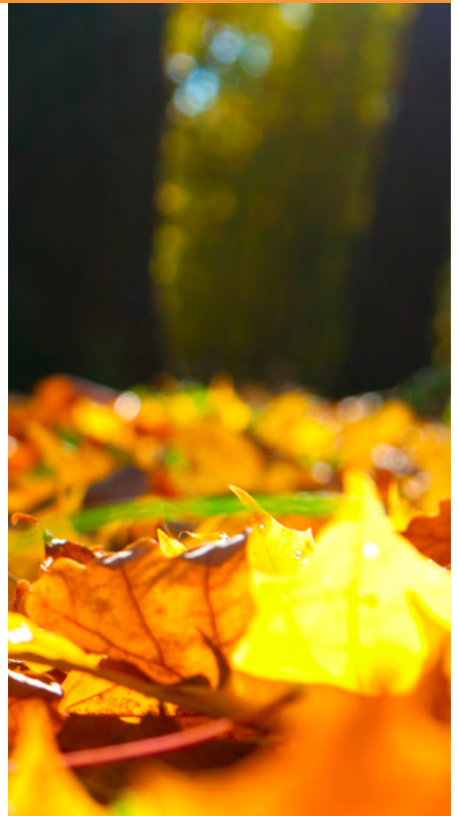


 **FOURFRONT CU7**
Mental Health Pillow



MEDICAL MATTRESS EXPERTS



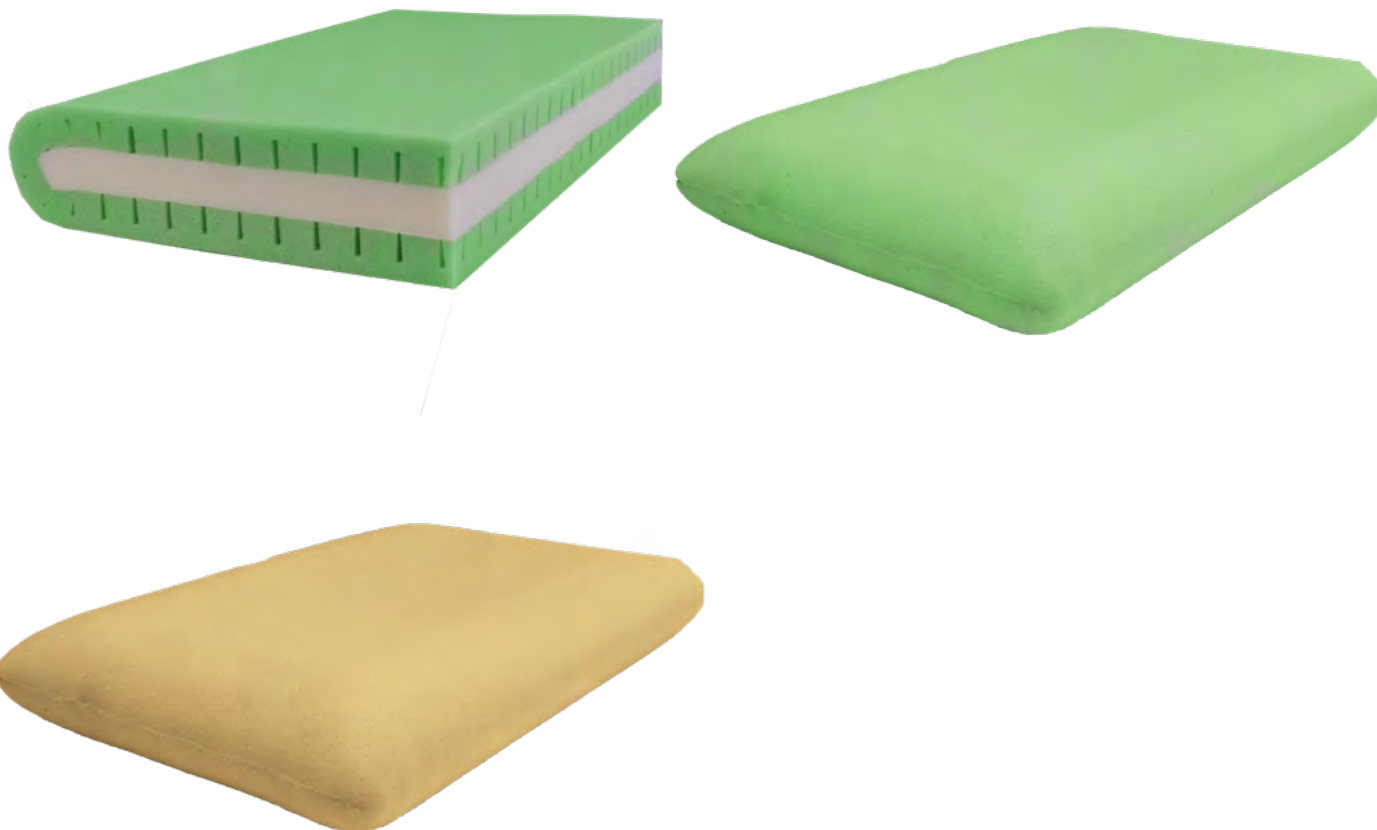
The Fourfront Range delivers ultimate patient care and support surface versatility within the mental health setting. Fourfront Static Care Mental Health Support Surfaces are the superior choice for demanding mental health ward applications.

Tried and trusted in facilities nationwide, the Fourfront range combines outstanding durability, 4-way rotational ability, a high standard and consistency of care and excellent value.

Fourfront Mattresses incorporate fully sealed and enclosed covers to protect the foam core. All foams used meet fire retardant standards for compliance within Mental Healthcare.



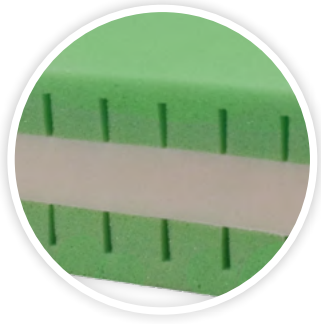
Fourfront CU7 Mental Health Pillow



/ Fourfront CU7

CODE	(MM)
FCU7000	750x430x120
Customisable, CAN BE MADE TO ANY SIZE	
THERAPEUTIC WEIGHT RANGE*	N/A
APPLICATIONS	✓ MENTAL HEALTH WARDS ✓ MENTAL HEALTH FACILITIES ✓ HOME CARE
WARRANTY**	5-YEAR FOAM CORE, 4-YEAR COVER (12-MONTH WARRANTY IN MENTAL HEALTH APPLICATION)
STANDARD COVER TYPE	FULLY SEALED & ENCLOSED SOFT TOUCH ULTRA

Features



PREMIUM DUAL DENSITY COMFORT FOAM CORE

- ✓ Modulated immersion & Comfort foam interface
- ✓ Deluxe comfort inner core
- ✓ Open cell high quality foam
- ✓ Meets BS5852 (fire retardant) source 5 specification
- ✓ All foams treated with Anti-Microbial Compound



- ✓ Edges sealed with non-reactive, odourless adhesive glue

SHEAR & FRICTION:



REPOSITIONING:



INFECTION CONTROL:



FIRMNESS:



MOISTURE & MICRO-CLIMATE:



PERFORMANCE & LONGEVITY:



MOBILITY & FUNCTION:



PRESSURE CARE RATING:

LOW RISK

Standard Custom Options



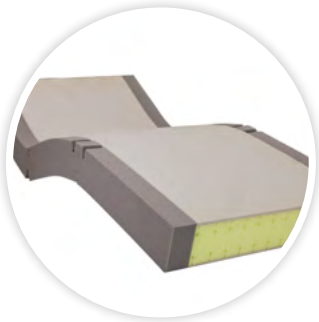
HINGED STRENGTHENED SIDES

- ✓ Increase lateral stability of support surface
- ✓ Improves patient safety and encourages central patient positioning
- ✓ Make patient transfers easier
- ✓ Unique hinge profile reduces foam fatigue and allow mattress to easily conform to varied bed positions
- ✓ Enables ease of primary patient care



MENTAL HEALTH SPECIFICATION COVER OPTIONS

- ✓ Pressure Care, Vapour Permeable, Polyurethane Material
- ✓ Non-Pressure Care, Damaged Resistant, Waterproof, PVC Material



SIZE

- ✓ Customisable to any size - width, length, height
- ✓ Contact Forté Healthcare

DISCLAIMERS

* Optimal patient weight range for pressure care and comfort. Minimum weight capacities are to be used as a guide only, it may be the situation that patients with a lower weight than the minimum weight threshold will be suited to a surface with a greater minimum weight threshold than that of their own weight for functional and/or individual comfort purposes.

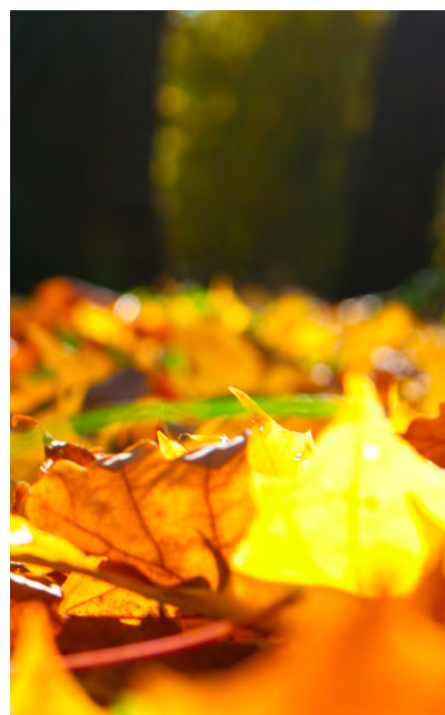
** Warranty refers to any manufacturing or product defects. Due to its nature, foam will soften and its resilience will decrease with usage and age. Contact Forté Healthcare Solutions for further specific information.



P. 1300 73 11 63

W. fortehealthcare.com.au

E. sales@fortehealthcare.com.au



MEDICAL MATTRESS EXPERTS