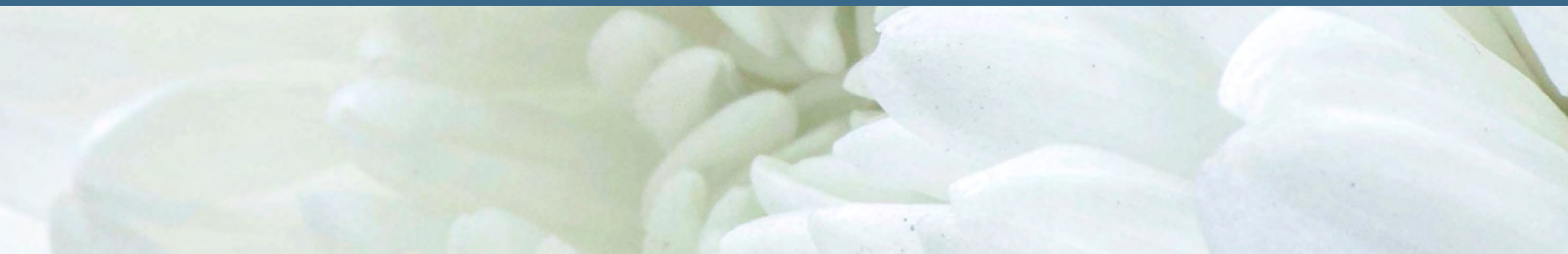




 **forté** Heavy Duty PVC1 Cover



# Heavy Duty PVC1 Cover

The Heavy Duty PVC cover is manufactured with a 100% waterproof, durable PVC material. This high performing cover is designed for high demanding patient care scenarios from inpatient mental health to group home care. This cover is designed as a damage resistant cover and does not offer pressure care.





### HEAVY DUTY PVC1100 MATERIAL

- ✓ 100% Waterproof
- ✓ Heavy Duty, Robust & Hardwearing
- ✓ Protects foam
- ✓ Superior resistance to cleaning agents
- ✓ Standard Colour: Grey

### CLEANING AND CARE

- ✓ 10,000ppm disinfection chemical suitability
- ✓ Wipe clean
- ✓ Stain Resistant
- ✓ Anti-microbial protected

### COMPLIANCE

- ✓ Fire retardant, meets BS 6807 ignition source 5 and BS 7175 ignition source 5 standards
- ✓ Anti-microbial protected
- ✓ All seams high frequency welded, no exposed sewn seams
- ✓ Meets and Exceeds Facility Requirement
- ✓ Material manufactured in Belgium, to Forté specification

### CONSTRUCTION

- ✓ All seams high frequency sealed & welded
- ✓ 180° / two-sided integrated zipper
- ✓ Waterfall Fluid Penetration Flap
- ✓ TGA Compliant Product Labelling

### INTEGRATED ZIPPER

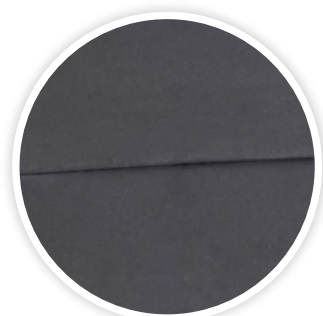
- ✓ 180° / Two-Sided Zipper
- ✓ Allows easy cover removal
- ✓ Robust and durable
- ✓ High frequency welded attachment for optimal protection against fluid ingress

### WATERFALL ZIPPER PROTECTION FLAP

- ✓ Provides additional protection against fluid ingress through zipper
- ✓ Meets infection control guidelines

### HIGH FREQUENCY SEALED AND WELDED SEAMS

- ✓ Electromagnetically fused seams protecting against risk of penetration of fluid
- ✓ Meets and exceeds infection control requirements
- ✓ Reinforced with additional heavy duty stitching at stress points
- ✓ 100% Sealed to prevent ingress of fluid or infection



# Options



## FULLY SEALED & ENCLOSED

- ✓ No-Zipper
- ✓ All seams welded and 100% waterproof to prevent ingress of fluid and infection (high frequency sealed and welded seams)
- ✓ Ultimate core durability and protection,
- ✓ Used for mental health - protects foam core against willful damage
- ✓ Used in high risk infection control applications
- ✓ Usually manufactured with an integrated pressure relief system



## CARRY HANDLES

- ✓ Fits to side of Mattress Cover for easy access whilst Mattress is on the bed
- ✓ Internal Reinforcement for Longevity
- ✓ Close Mount Design Significantly Reduces Risk of Getting Caught on Other Patient Care Equipment
- ✓ Fully Sealed Non-Absorbent and Wipe-Clean for Infection Control
- ✓ Very Strong and Flexible for Performance and Durability



## CUSTOM PRINTING

- ✓ Print ward location, facility name, asset number or any other details to track and control where your mattress gets used
- ✓ Audit register
- ✓ Print additional care information specific to your facility
- ✓ Custom branding available
- ✓ Full colour, indelible, digital system providing excellent flexibility and versatility



## EVACUATION SYSTEMS

- ✓ Fully Integrated / Built-in Forté Premium Assure Evacuation System
- ✓ Standard Forté evacuation system accessory
- ✓ Contact Forté directly for further details



## CUSTOM ZIPPER

- ✓ up to 360° / Four-Sided Zipper
- ✓ Allows easy cover removal
- ✓ Robust and durable
- ✓ High frequency welded attachment for optimal protection against fluid ingress
- ✓ Other custom zippers available - contact Forté and provide them with the details of what you require. i.e. water resistant, invisible.

# FORTÉ HEAVY DUTY PVC1100 FABRIC

## Typical Applications

General Medical Mattress Cover Bases  
 Aged Care Mattress Cover Bases  
 General Hospital Ward Mattress Base Covers

Excellent HF Welding Compatibility	Allows covers to be sealed against fluid ingress at seams
100% Waterproof	Allows care staff to 'Wipe-Clean', effective barrier against fluid ingress
Fire Retardant	Meets hospital and medical facility requirements



High durability



Waterproof



Fire retardant



Excellent HF welding capacity



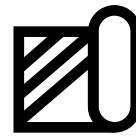
Anti-Static



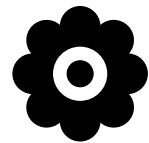
Anti-Microbial protection



Anti-Bacterial



Barrier Fabric



Hypoallergenic

Property	Result	Test Method
Description	Polyester fabric with PVC both sides.	
Weight	±380 g/m <sup>2</sup> (± 5%)	ASTM D3776
Width	220cm	
Roll Length	50m	
Microbial	Bacteria & Mite Resistant	New York State 63 Test
Hydro (psi)	323 (face) x 340 (reverse)	ASTM D7551/A
Fire Standard	PASS	ASTM D6413 / AS1441.13-1973
Ignitibility	14	AS1530.3-1999
Spread of Flame	0	AS1530.3-1999
Heat Evolved	0	AS1530.3-1999
Smoke Developed	5	AS1530.3-1999
Grab tensile (lbs)	215 (warp) x 185 (weft)	ASTM D5034
Tongue Tear (lbs)	79 (warp) x 78 (weft)	ASTM D2261
Adhesion (lbs/in <sup>2</sup> )	Good	ASTM D751
Cleaning & Care:	Machine washable 40°C Do not bleach Do not iron Do not dry-clean Do not tumble dry	