



forté  
HEALTHCARE

AIR MATTRESS SURROUNDS

# Icon AMS7000

## Alternating Air Support Surface Surround

EVERY PRODUCT  
CUSTOM MADE

Excellent for use with Partner Beds, Comfortable and Supportive

The AMS7000 Icon range provides additional width and/or length to Alternating Support Surfaces to meet bed surface size requirements. Utilising the proven Forté Icon Triple Layer Pressure Care Foam Core, the AMS7000 series is a versatile surface that enhances the functionality of an Alternating Surface. The AMS7000 icon range is an effective partner mattress, allowing 2 persons to utilise the surface with the integration of the Air System. An extensive variety of configurations are available providing for a wide range of patient needs and requirements. The Icon AMS7000 is manufactured to suit both Full Replacement and Overlay Surfaces.

### VISCO-GRADE, UPPER IMMERSION LAYER

- ✓ Alleviates localised pressure points
- ✓ Provides maximum contact with patient for distribution of interface pressure
- ✓ High temperature stability to deliver consistent immersion, performance and comfort
- ✓ Visco-elastic cell structure provides low-shear surface
- ✓ Conforms to EPUAP, NPUAP & PPIA guidelines for quality and comfort

### APPLICATIONS

- ✓ Hospital Wards
- ✓ Aged Care Facilities
- ✓ Home Care
- ✓ Partner Beds

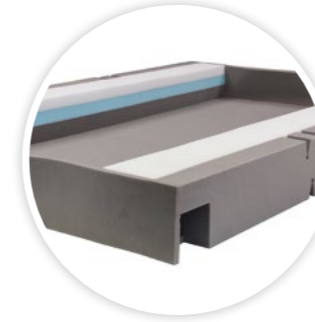


### TRIPLE LAYERED CORE

- ✓ Foam conforms to AS/NZS 4088.1 (Int):1993 and FMVSS302 & SAE T2002
- ✓ Anti-microbial treatment applied to foam maximises longevity and core micro-climate

### DELUXE GRADE MID-LAYER

- ✓ Open cell high quality foam
- ✓ Provides exceptional comfort and postural support for repositioning and patient care



### FIRM BASE LAYER

- ✓ Provides protection against 'bottoming-out' during transfer, repositioning and whilst in the inclined/fowler position
- ✓ Provides exceptional comfort, support for repositioning and patient care

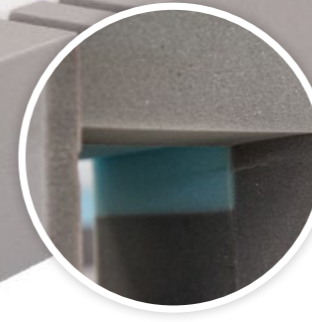


### PROFILE STABILISING SIDES

- ✓ Enables ease of primary patient care
- ✓ Facilitates patient transfers
- ✓ Unique hinge points allow mattress to easily conform to varied bed positions
- ✓ Encourages central patient positioning

### 360° ZIPPER

- ✓ Full removable upper cover enables easy installation of air mattress on-site
- ✓ Easy access for internal mattress adjustment/repair
- ✓ Double coated Premiflex waterfall flap provides protection against fluid ingress. Backing is sealed for ease of cleaning



### COMPATIBLE WITH CPR FUNCTION

- ✓ Custom made to provide access to the CPR function. Note - the access style differs by air mattress brand
- ✓ Cover print ensures visibility for training and in-service purposes



### AIR SUPPLY PROTECTION SHEATH

- ✓ Protects against fluid ingress into the cover
- ✓ Easy to clean and manage infection control risks

### Sovereign Air Mattress Surrounds/Partner Mattress

CODE	OVERALL SIZE	
AMS7010	2000x1350x200	Double
AMS7011	2000x1530x200	Queen



# MEDICAL MATTRESS EXPERTS



P. 1300 73 11 63  
W. [fortehealthcare.com.au](http://fortehealthcare.com.au)  
E. [sales@fortehealthcare.com.au](mailto:sales@fortehealthcare.com.au)