



forté
HEALTHCARE

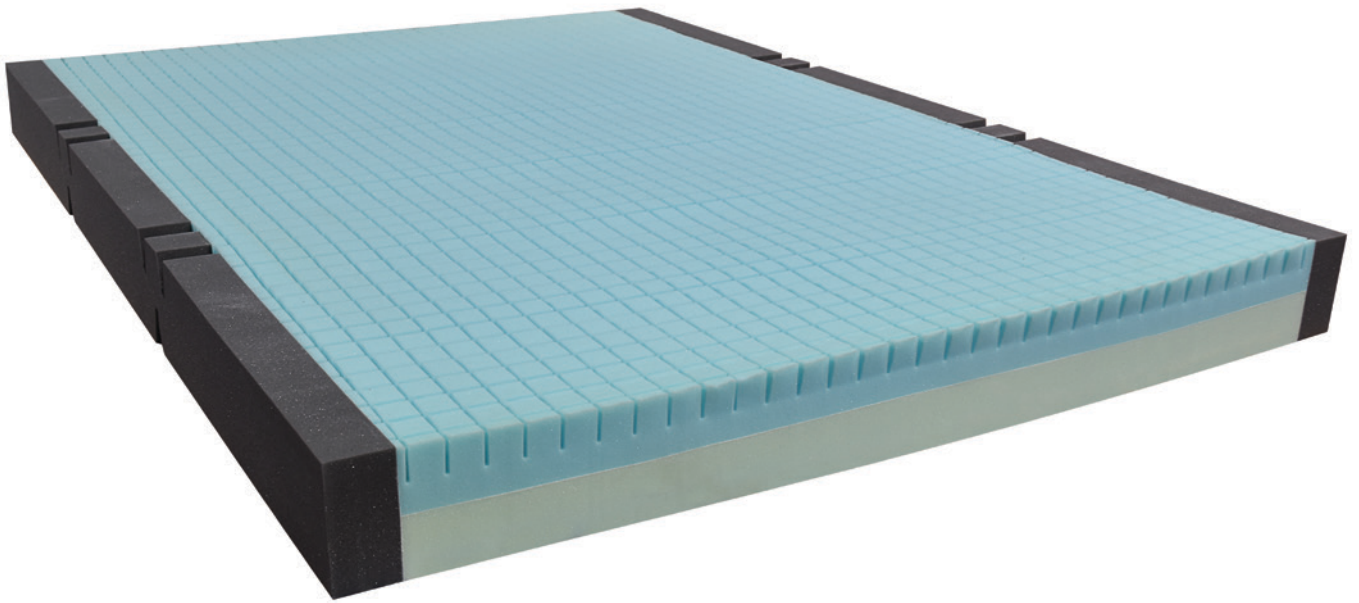


AUREA MODULATED

Medium Care Pressure Care Mattress

The Forté Aurea Modulated mattress is ideal for low to medium care applications where support and comfort is essential. The Aurea is designed using full open-cell foam technology for improved micro-climate performance and air circulation within the foam core.

The Aurea is a Dual Density mattress with the Advantiflex Classic cover to provide Immersion, Micro-climate management and support for repositioning for individuals with Medium Risk of Pressure Injury.

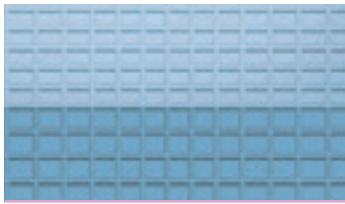


Aurea Modulated Mattress - Queen »



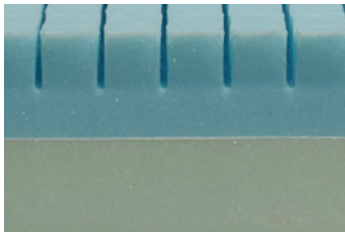
Advantiflex Classic Cover - Queen »

FOAM CORE FEATURES



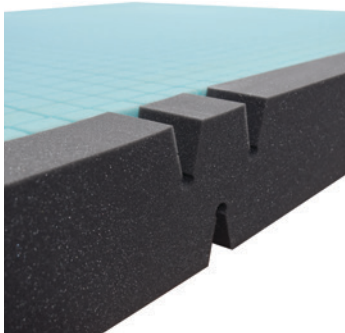
TRIPLE ZONED MODULATED IMMERSION INTERFACE LAYER

- » Zoned to provide maximum patient support and immersion. Larger modulation in sacrum region and smaller modulations in scapular and heel regions.
-



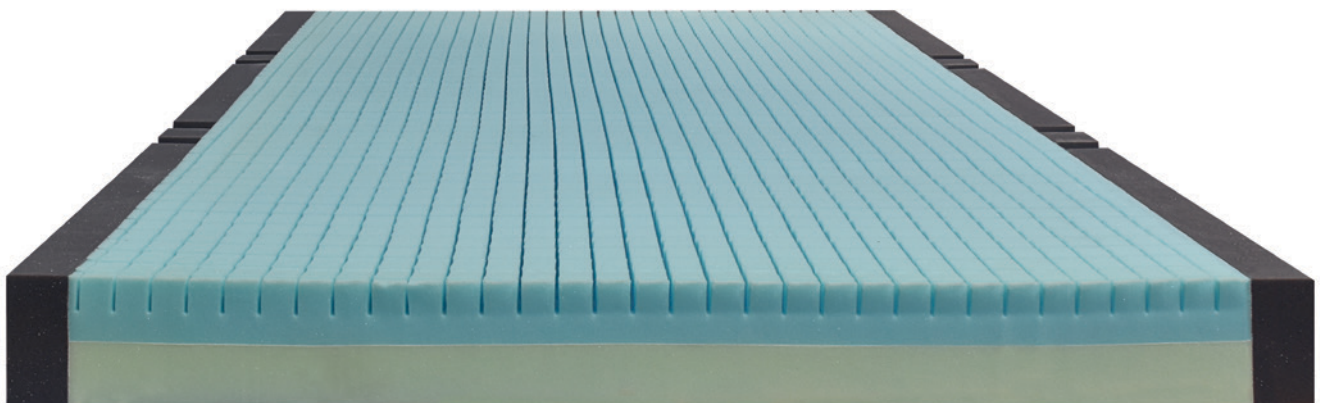
PREMIUM FIRM FOUNDATION LAYER

- » Provides protection against 'bottoming-out' during transfer, repositioning and whilst in the inclined/fowler position
 - » Provides exceptional comfort, support for repositioning and patient care
-



HINGED STRENGTHENED SIDES

- » Increase lateral stability of support surface
 - » Improves patient safety and encourages central patient positioning
 - » Make patient transfers easier
 - » Unique hinge profile reduces foam fatigue and allow mattress to easily conform to varied bed positions
 - » Enables ease of primary patient care
-

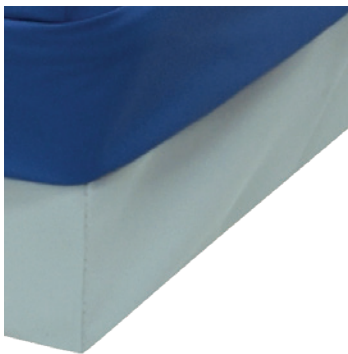


COVER FEATURES



ADVANTIFLEX CLASSIC PREMIUM PRESSURE CARE COVER UPPER MATERIAL

- » High Performance, Single Sided Polyurethane (PU1100)
- » 4-Way/Bi-Directional Stretch for Shear Protection, Immersion & Envelopment
- » Vapour permeable and breathable
- » Resistant to patient body fluids
- » Flexible and gentle to the skin
- » Standard Colour: Blue



HEAVY DUTY BASE MATERIAL

- » 100% Waterproof
- » Heavy Duty, Robust & Hardwearing
- » Protects foam core against the bed base
- » Provides exceptional conformity and profiling to medical bed surfaces
- » Reduces shearing forces by sliding against bed base as the bed base profiles
- » Superior resistance to cleaning agents
- » Standard Colour: Grey



CLEANING & CARE

- » 1,000ppm disinfection chemical suitability
- » Wipe clean
- » Stain Resistant
- » Anti-microbial protected



COMPLIANCE

- » Fire retardant, meets BS 6807 ignition source 5 and BS 7175 ignition source 5 standards
- » Anti-microbial protected
- » All seams high frequency welded, no exposed sewn seams
- » Meets and Exceeds Facility Requirement
- » Materials manufactured in Belgium, to Forté specification.



CONSTRUCTION

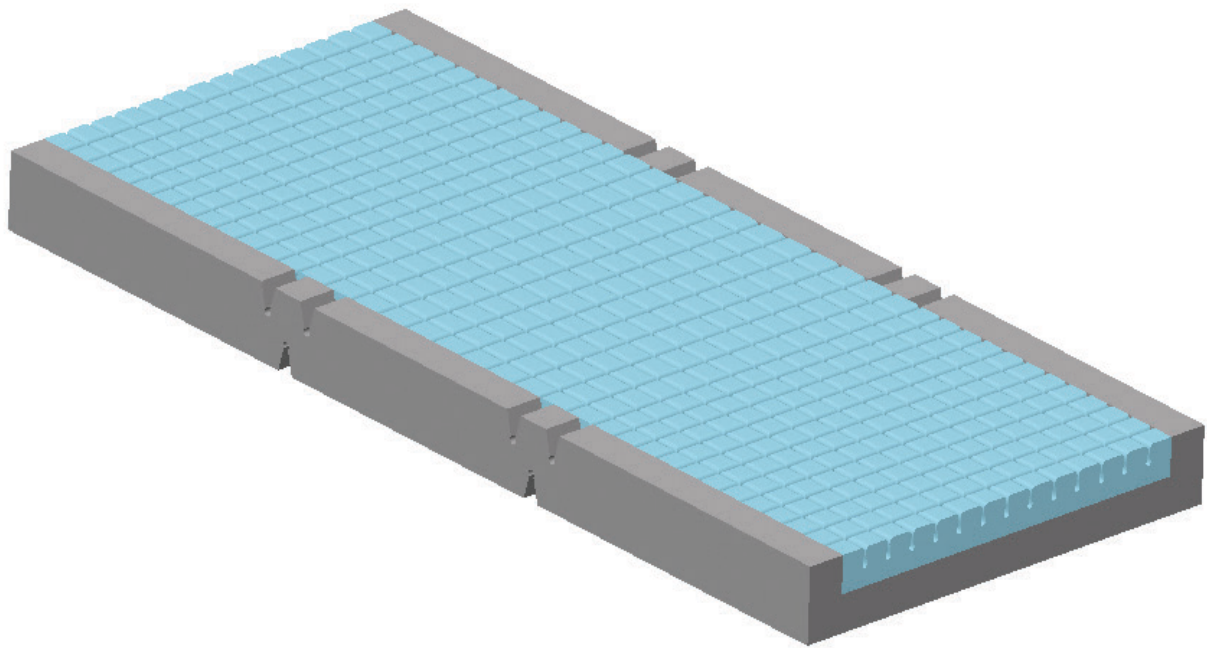
- » All seams high frequency sealed & welded to prevent ingress of fluid or infection
- » 180° / Two-Sided Zipper
- » Waterfall Fluid Penetration Flap
- » TGA Compliant Product Labelling



WATERFALL ZIPPER PROTECTION FLAP

- » Protects additional protection against fluid ingress through zipper
- » Meets & exceeds infection control guidelines

SPECIFICATIONS



Code	Dimensions (L x W x D mm)	Size	Product Ratings	
AUS1000	1980x880x150	Single	Shear & Friction	0 ———— 5 ●
AUSL1000	2030x880x150	Single, Long		
AUKS1000	1980x1050x150	King Single	Repositioning	0 ———— 5 ●
AUKSL1000	2030x1050x150	King Single, Long		
AUEW1000	1980x1150x150	Extra-Wide	Infection Control	0 ———— 5 ●
AUEWL1000	2030x1150x150	Extra Wide, Long		
AUD1000	1980x1350x150	Double	Firmness	0 ———— 5 ●
AUDL1000	2030x1350x150	Double, Long		
AUQ1000	1980x1530x150	Queen	Moisture & Microclimate	0 ———— 5 ●
AUQL1000	2030x1530x150	Queen, Long		
AUK1000	1980x1850x150	King	Performance & Longevity	0 ———— 5 ●
AUKL1000	2030x1850x150	King, Long		
-	Customise	To suit any bed platform	Mobility & Function	0 ———— 5 ●
Cover		Warranty		
Advantiflex Classic		5 Year Foam Core 2 Year Cover	Pressure Care Rating	MEDIUM RISK
Therapeutic Weight Range			Applications	
40 - 180kg			» Hospital Wards » Aged Care » Homecare	

CLINICAL PRESSURE MAPPING



SUPINE



TEKSCAN PRESSURE MEASUREMENT

System: 7.20C	Rows: 104	Sensel Area: 2.89008cm ²	Micro Second: 0
Sensor Type: 5400D	Cols: 34	Seconds per Frame: 2	Units: raw

PRESSURE MAPPING PARAMETERS

Bed Surface: Alrick, 5 Function Electric Hospital Bed	Subject: 98kg, Male	Height: 188cm
Duration: Pressure Mapping was captured after 6 hours of subject laying upon support surface		Ambient Temperature: 21°C

Pressure Mapping measures the interface pressure between a support surface and its user. At Forté Healthcare we use the Tekscan Pressure Measurement System, a thin and flexible sensor which ensures minimal interference to the surface performance. The System helps to measure the pressure redistribution of a human body on the surface of our mattresses.

The Pressure Mapping images above demonstrate the pressure distribution of a 98kg male over a 6-hour period, shown in a variety of positions on the *Aurea Modulated Medium Care Pressure Care Mattress*.

Pressure Mapping aids us in the Research & Development of our products, allowing a close insight into areas of peak pressure on the body. Counter-control measures can therefore be taken to ensure peak pressures are successfully redistributed, thus mitigating the risk of pressure injuries.

Pressure Mapping is a commonly used tool in attaining clinical data on interface pressures, however Forté Healthcare acknowledges "it cannot be used to conclude on internal stresses and the stress concentration levels in deep vascularized tissues, particularly muscles."^[1]

The example pressure mapping provided by Forté Healthcare is only intended for use as a clinical aid, "rather than a replacement to clinical judgement."^[2]

[1] A. Gefen & J. Levine (2007) The false premise in measuring body-support interface pressures for preventing serious pressure ulcers, Journal of Medical Engineering & Technology, 31:5, 375-380, DOI: 10.1080/03091900601165256
 [2] Dunk AM & Gardner A (2016) Body shape: a predictor for pressure injury risk, Wound Practice and Research, 24:2, 92-98, ISSN 2202-9729



**GLOBAL TECHNOLOGY
AUSTRALIAN MADE**

**All mattresses are made by
Forté Healthcare in Armidale
NSW in accordance with all
Australian manufacturing
and clinical standards.**