

MEDICAL MATTRESS EXPERTS



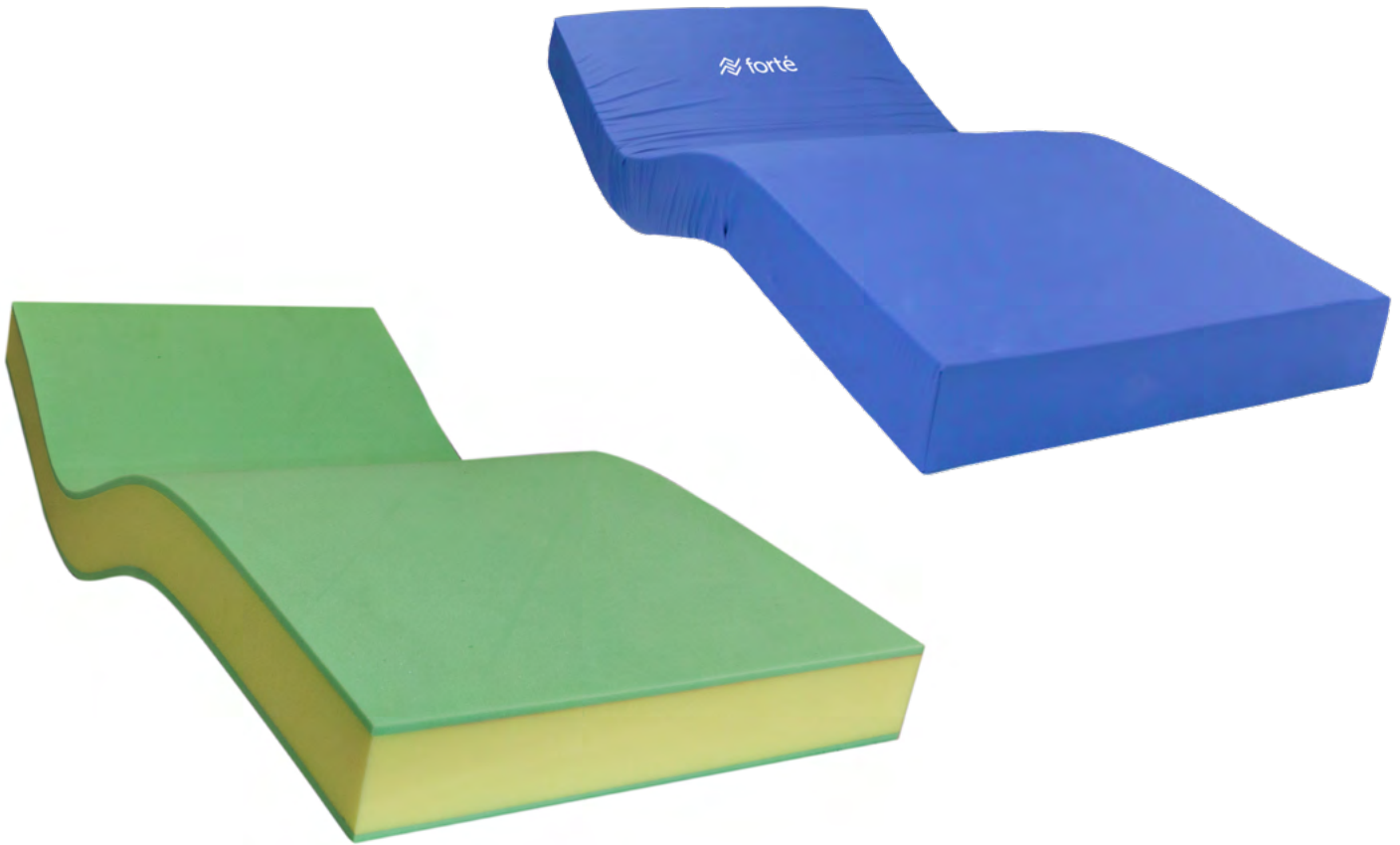
The Fourfront Range delivers ultimate patient care and support surface versatility within the mental health setting. Fourfront Static Care Mental Health Support Surfaces are the superior choice for demanding mental health ward applications.

Tried and trusted in facilities nationwide, the Fourfront range combines outstanding durability, 4-way rotational ability, a high standard and consistency of care and excellent value.

Fourfront Mattresses incorporate fully sealed and enclosed covers to protect the foam core. All foams used meet fire retardant standards for compliance within Mental Healthcare.



Fourfront FM4 4-Way Rotational Triple Layer Mental Health Mattress



/ Fourfront FM4

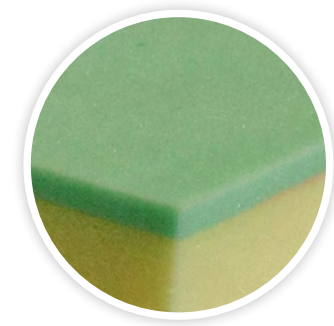
CODE	DIMENSIONS (MM)	SIZE
FM4S1000	1980x880x150	Single
FM4SL1000	2030x880x150	Single, Long
FM4KS1000	1980x1050x150	King Single
FM4KSL1000	2030x1050x150	King Single, Long
FM4EW1000	1980x1150x150	Extra-Wide
FM4EWL1000	2030x1150x150	Extra-Wide, Long
FM4D1000	1980x1350x150	Double
FM4DL1000	2030x1350x150	Double, Long
FM4Q1000	1980x1530x150	Queen
FM4QL1000	2030x1530x150	Queen, Long
FM4K1000	1980x1850x150	King
FM4KL1000	2030x1850x150	King, Long
	Customisable	CAN BE MADE TO SUIT ANY BED
THERAPEUTIC WEIGHT RANGE*	150KG	
APPLICATIONS	✔ MENTAL HEALTH WARDS ✔ MENTAL HEALTH FACILITIES ✔ HOME CARE	
WARRANTY**	5-YEAR FOAM CORE, 2-YEAR COVER (12-MONTH WARRANTY IN MENTAL HEALTH APPLICATION)	
STANDARD COVER TYPE	FULLY SEALED & ENCLOSED ADVANTIFLEX	

Features



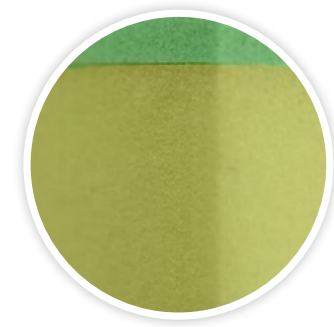
4-WAY ROTATIONAL TRIPLE LAYERED CORE

- ✓ 4-way rotational core
- ✓ Fire retardant - meets BS5852 source 5 specification
- ✓ Premium grade, high performance foams
- ✓ Profiles & conforms well to Acute Care and Mental Health Beds
- ✓ Foam treated with anti-microbial agent to improve micro-climate and hygiene conditions within the cover



SOFT PATIENT INTERFACE LAYER

- ✓ Enhances patient comfort to deliver superior rest
- ✓ Premium Grade Foam



PREMIUM POSTURAL SUPPORT CENTRE

- ✓ Open cell high quality foam
- ✓ Provides exceptional comfort and postural support for repositioning and patient care
- ✓ Provides exceptional conformity and profiling to medical bed surfaces

SHEAR & FRICTION:



REPOSITIONING:



INFECTION CONTROL:



FIRMNESS:



MOISTURE & MICRO-CLIMATE:



PERFORMANCE & LONGEVITY:



MOBILITY & FUNCTION:



PRESSURE CARE RATING:

LOW-MEDIUM RISK

Fourfront FS4 Seclusion and Isolation Care Mattress/Bed Replacement



/ Fourfront FS

DIMENSIONS (MM)	CODE (FOURFRONT FS4, WITHOUT PILLOW)	CODE (FOURFRONT FS5, WITH PILLOW)
1900x900x400	FS41000	FS51000
1900x900x500	FS41001	FS51001
2000x900x400	FS41002	FS51002
2000x900x500	FS41003	FS51003
1900x1000x400	FS41004	FS51004
1900x1000x500	FS41005	FS51005
2000x1000x400	FS41006	FS51006
2000x1000x500	FS41007	FS51007
THERAPEUTIC WEIGHT RANGE*	N/A	
APPLICATIONS	✔ MENTAL HEALTH WARDS ✔ MENTAL HEALTH FACILITIES ✔ HOME CARE	
WARRANTY**	5-YEAR FOAM CORE, 4-YEAR COVER (12-MONTH WARRANTY IN MENTAL HEALTH APPLICATION)	
STANDARD COVER TYPE	FULLY SEALED & ENCLOSED HEAVY DUTY PVC	

Features

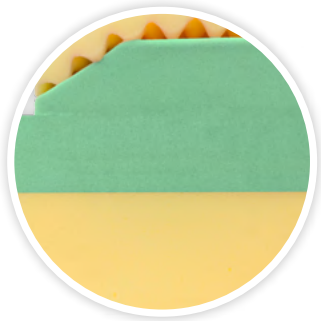


PATIENT INTERFACE LAYER

- ✓ Enhances patient comfort to deliver superior rest
- ✓ Premium grade, high performance foam
- ✓ Meets BS5852 (fire retardant) source 5 specification

PREMIUM POSTURAL SUPPORT LOWER CORE REGION/FOUNDATION

- ✓ Open cell high quality foam
- ✓ Provides protection against 'bottoming-out' during transfer, repositioning and whilst in the inclined/fowler position
- ✓ Provides exceptional comfort and postural support for repositioning and patient care
- ✓ Meets BS5852 (fire retardant) source 5 specification



OPTIONAL INTEGRATED PILLOW SECTION

- ✓ Enhances patient comfort
- ✓ Dual density inverted convolute construction
- ✓ Tamper resistant
- ✓ High performance foam
- ✓ Meets BS5852 source 5 specification

SHEAR & FRICTION:



REPOSITIONING:



INFECTION CONTROL:



FIRMNESS:



MOISTURE & MICRO-CLIMATE:



PERFORMANCE & LONGEVITY:



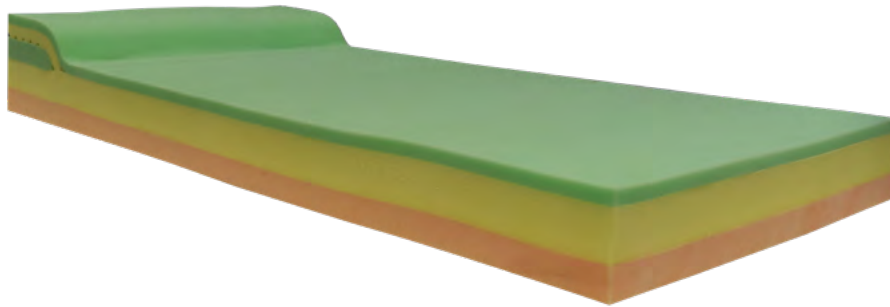
MOBILITY & FUNCTION:



PRESSURE CARE RATING:

LOW RISK

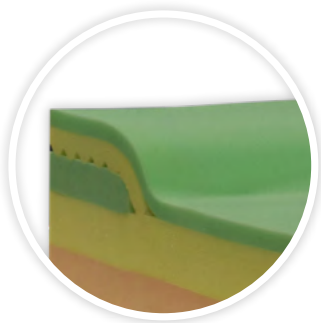
Fourfront FS6 Seclusion and Isolation Care All-in-One Mattress



/ Fourfront FS6

CODE	DIMENSIONS (MM)	SIZE
FS6S1000	1980x880x150	Single
FS6SL1000	2030x880x150	Single, Long
FS6KS1000	1980x1050x150	King Single
FS6KSL1000	2030x1050x150	King Single, Long
FS6EW1000	1980x1150x150	Extra-Wide
FS6EWL1000	2030x1150x150	Extra-Wide, Long
FS6D1000	1980x1350x150	Double
FS6DL1000	2030x1350x150	Double, Long
FS6Q1000	1980x1530x150	Queen
FS6QL1000	2030x1530x150	Queen, Long
FS6K1000	1980x1850x150	King
FS6KL1000	2030x1850x150	King, Long
	Customisable	CAN BE MADE TO SUIT ANY BED
THERAPEUTIC WEIGHT RANGE*	150KG	
APPLICATIONS	✔ MENTAL HEALTH WARDS ✔ MENTAL HEALTH FACILITIES ✔ HOME CARE	
WARRANTY**	5-YEAR FOAM CORE, 4-YEAR COVER (12-MONTH WARRANTY IN MENTAL HEALTH APPLICATION)	
STANDARD COVER TYPE	FULLY SEALED & ENCLOSED HEAVY DUTY PVC 2	

Features

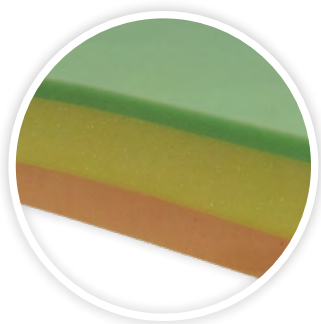


INTEGRATED PILLOW SECTION

- ✓ Enhances patient comfort
- ✓ Dual density inverted convolute construction
- ✓ Tamper resistant
- ✓ High performance foam
- ✓ Meets BS5852 source 5 specification

PATIENT INTERFACE LAYER

- ✓ Enhances patient comfort to deliver superior rest
- ✓ Premium grade, high performance foam
- ✓ Meets BS5852 (fire retardant) source 5 specification



PREMIUM POSTURAL SUPPORT LOWER CORE REGION/FOUNDATION LAYERS

- ✓ Open cell high quality foam
- ✓ Provides protection against 'bottoming-out'
- ✓ Provides exceptional comfort and postural support for repositioning and patient care
- ✓ Meets BS5852 (fire retardant) source 5 specification

SHEAR & FRICTION:



REPOSITIONING:



INFECTION CONTROL:



FIRMNESS:



MOISTURE & MICRO-CLIMATE:



PERFORMANCE & LONGEVITY:



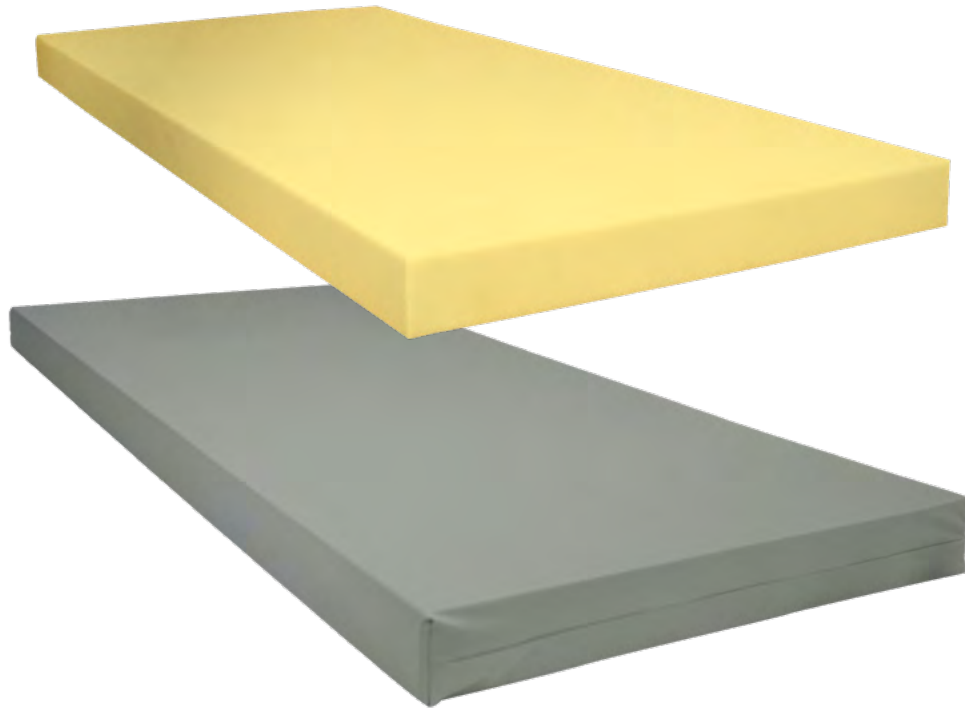
MOBILITY & FUNCTION:



PRESSURE CARE RATING:

LOW RISK

Fourfront FS7 Seclusion and Isolation Care Mattress



/ Fourfront FS7

CODE	DIMENSIONS (MM)	SIZE
FS7S1000	1980x880x150	Single
FS7SL1000	2030x880x150	Single, Long
FS7KS1000	1980x1050x150	King Single
FS7KSL1000	2030x1050x150	King Single, Long
FS7EW1000	1980x1150x150	Extra-Wide
FS7EWL1000	2030x1150x150	Extra-Wide, Long
FS7D1000	1980x1350x150	Double
FS7DL1000	2030x1350x150	Double, Long
FS7Q1000	1980x1530x150	Queen
FS7QL1000	2030x1530x150	Queen, Long
FS7K1000	1980x1850x150	King
FS7KL1000	2030x1850x150	King, Long
	Customisable	CAN BE MADE TO SUIT ANY BED
THERAPEUTIC WEIGHT RANGE*	N/A	
APPLICATIONS	✓ MENTAL HEALTH WARDS ✓ MENTAL HEALTH FACILITIES ✓ HOME CARE	
WARRANTY**	5-YEAR FOAM CORE, 4-YEAR COVER (12-MONTH WARRANTY IN MENTAL HEALTH APPLICATION)	
STANDARD COVER TYPE	FULLY SEALED & ENCLOSED HEAVY DUTY PVC 2	

Features



SUPPORTIVE FOAM CORE

- ✓ Enhances patient comfort to deliver superior rest
- ✓ Premium grade, Open Cell, high performance foam
- ✓ Meets BS5852 (fire retardant) source 5 specification
- ✓ Provides protection against 'bottoming-out' during transfer, repositioning and whilst in the inclined/fowler position

SHEAR & FRICTION:



REPOSITIONING:



INFECTION CONTROL:



FIRMNESS:



MOISTURE & MICRO-CLIMATE:



PERFORMANCE & LONGEVITY:



MOBILITY & FUNCTION:



PRESSURE CARE RATING:

LOW RISK

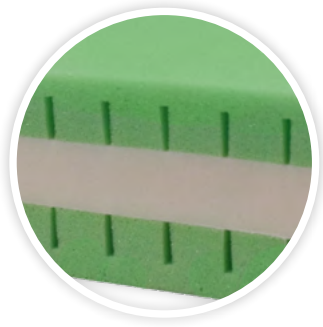
Fourfront CU7 Mental Health Pillow



/ Fourfront CU7

CODE	(MM)
FCU7000	750x430x120
Customisable, CAN BE MADE TO ANY SIZE	
THERAPEUTIC WEIGHT RANGE*	N/A
APPLICATIONS	✓ MENTAL HEALTH WARDS ✓ MENTAL HEALTH FACILITIES ✓ HOME CARE
WARRANTY**	5-YEAR FOAM CORE, 4-YEAR COVER (12-MONTH WARRANTY IN MENTAL HEALTH APPLICATION)
STANDARD COVER TYPE	FULLY SEALED & ENCLOSED SOFT TOUCH ULTRA

Features



PREMIUM DUAL DENSITY COMFORT FOAM CORE

- ✓ Modulated immersion & Comfort foam interface
- ✓ Deluxe comfort inner core
- ✓ Open cell high quality foam
- ✓ Meets BS5852 (fire retardant) source 5 specification
- ✓ All foams treated with Anti-Microbial Compound



- ✓ Edges sealed with non-reactive, odourless adhesive glue

SHEAR & FRICTION:



REPOSITIONING:



INFECTION CONTROL:



FIRMNESS:



MOISTURE & MICRO-CLIMATE:



PERFORMANCE & LONGEVITY:



MOBILITY & FUNCTION:



PRESSURE CARE RATING:

LOW RISK

Standard Custom Options



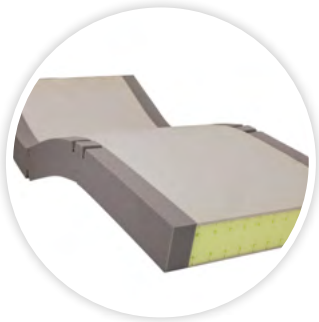
HINGED STRENGTHENED SIDES

- ✔ Increase lateral stability of support surface
- ✔ Improves patient safety and encourages central patient positioning
- ✔ Make patient transfers easier
- ✔ Unique hinge profile reduces foam fatigue and allow mattress to easily conform to varied bed positions
- ✔ Enables ease of primary patient care



MENTAL HEALTH SPECIFICATION COVER OPTIONS

- ✔ Pressure Care, Vapour Permeable, Polyurethane Material
- ✔ Non-Pressure Care, Damaged Resistant, Waterproof, PVC Material



SIZE

- ✔ Customisable to any size - width, length, height
- ✔ Contact Forté Healthcare

DISCLAIMERS

* Optimal patient weight range for pressure care and comfort. Minimum weight capacities are to be used as a guide only, it may be the situation that patients with a lower weight than the minimum weight threshold will be suited to a surface with a greater minimum weight threshold than that of their own weight for functional and/or individual comfort purposes.

** Warranty refers to any manufacturing or product defects. Due to its nature, foam will soften and its resilience will decrease with usage and age. Contact Forté Healthcare Solutions for further specific information.