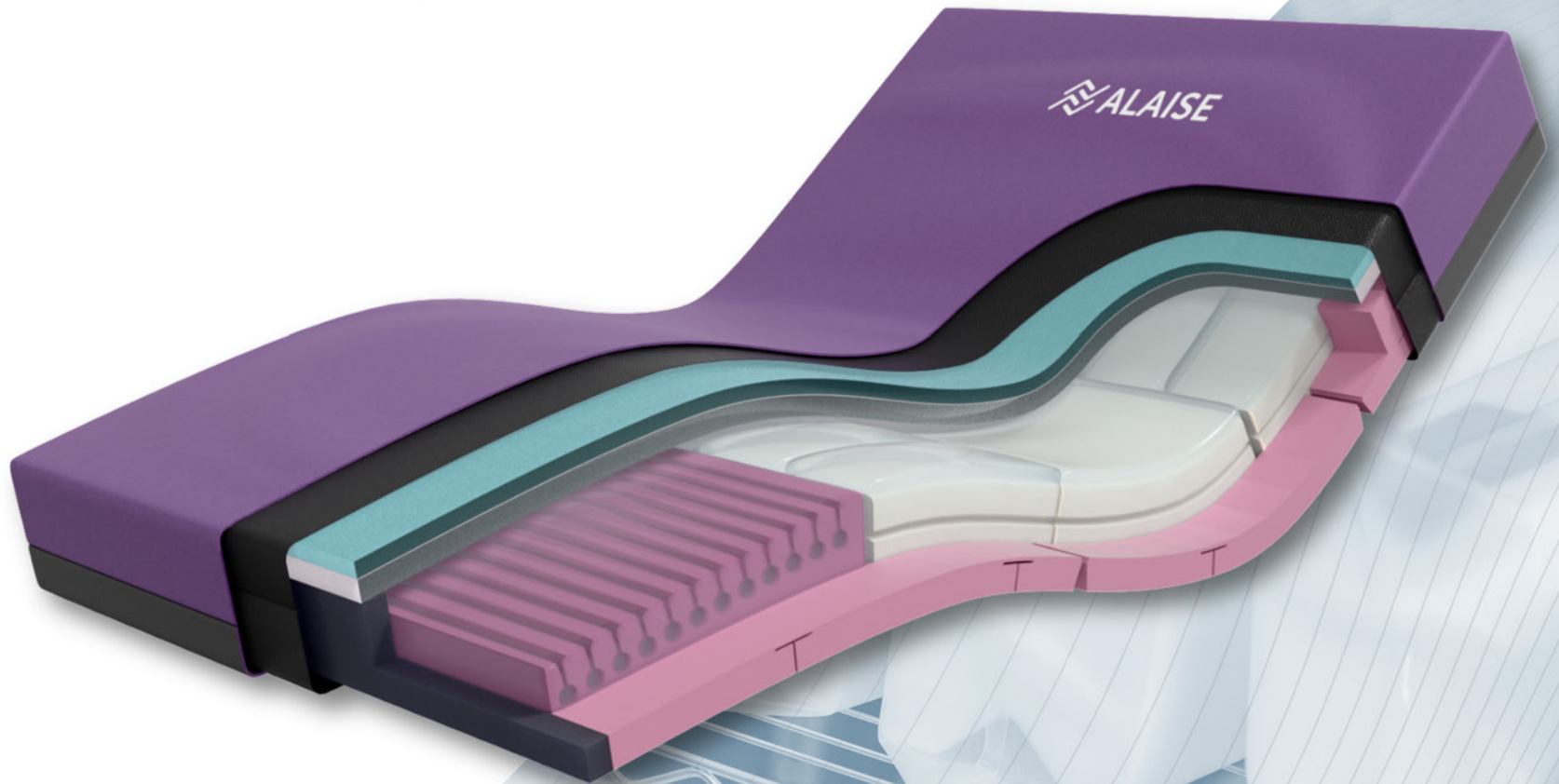


# ALAISE

The Revolution in Pumpless Air







The simplicity of foam meets the pressure care of air

### High Risk Pressure Care

- Reduces pressure injury risk with innovative pumpless air technology
- Provides adaptive support for lasting comfort

### Dignity, Independence & Mobility

- Improves mobility and ease of repositioning
- Promotes independence and dignity

### Pain Management & Comfort

- Designed to alleviate pain and minimise discomfort
- Effortlessly promotes user comfort

### Maintenance Free Applications

- Delivers reliable support without regular upkeep
- Minimises maintenance while ensuring long-term care



## Risk Rating

Shear & Friction	1 2 3 4 5	<div style="width: 40%;"></div>
Repositioning	1 2 3 4 5	<div style="width: 45%;"></div>
Infection Control	1 2 3 4 5	<div style="width: 30%;"></div>
Firmness	1 2 3 4 5	<div style="width: 35%;"></div>
Moisture & Microclimate	1 2 3 4 5	<div style="width: 45%;"></div>
Performance & Longevity	1 2 3 4 5	<div style="width: 45%;"></div>
Mobility & Function	1 2 3 4 5	<div style="width: 40%;"></div>
Pressure Care Rating	High - Very High Risk	
Warranty	5 Year Foam Core 5 Year Air Cell 4 Year Premiflex Ultra Cover 2 Year Luxury Homecare Cover	
Therapeutic Weight Loading	Single (300kg) King Single (350kg)	
Applications	Hospital Wards Aged Care Palliative Care Homecare	





# Product Features

## Engineered Foam Technology

- Cooling Gel Memory Foam Boosts Comfort, Support, and Temperature Control

## Full-Length Air Cells

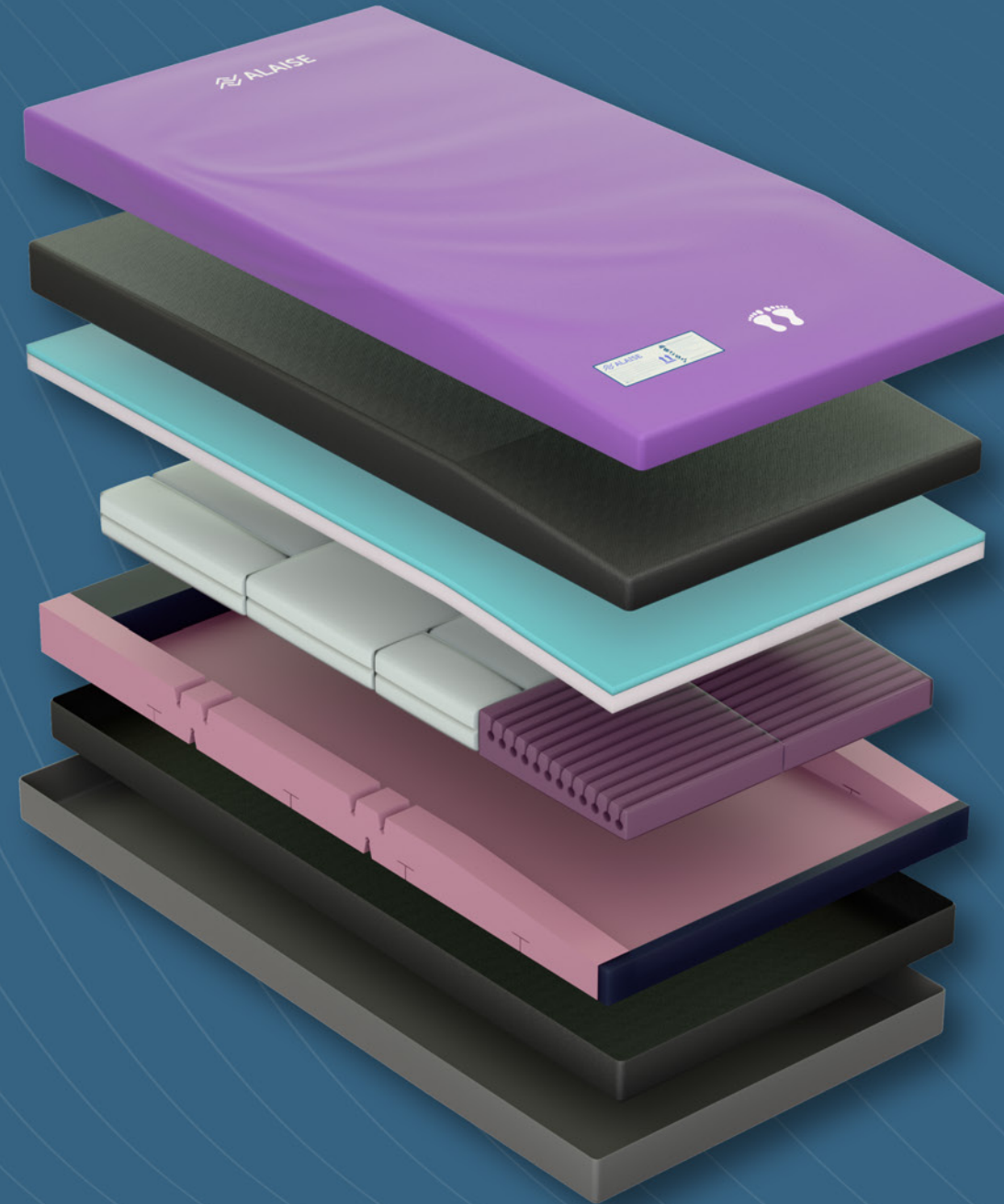
- Ensures Pressure Redistribution in Any Posture with a Modular Cell System that Adapts to Width Adjustments

## Sacral 'Reserv-Air' Protection System

- Protects Pelvic Region from 'Bottoming Out' During Prolonged Seating

## High Support Perimeter

- Engineered Foam & Adaptive Cells Ensure Safer Transfers



## Customisable Comfort Levels

- Soft, Medium & Firm Comfort for individual needs and preferences

## Anti-Shear System

- Multi-Compartment Design Limits Internal Movement, Reduces Shear, & Protects Sensitive Skin

## Horizontally Zoned Cell Technology

- Safer Transfers with Stable Airflow & Anatomically Calibrated Scapular, Lumbar, & Thigh Zones for Optimal Pressure Redistribution

## Heel Pressure Reduction Zone

- Gentle Slope Redistributes Pressure, with Heel-Specific Cells Enhancing Immersion & Support

# Cover Options

## Premiflex Ultra Cover

- 4-Way Stretch, Anti-Shear
- Wipe-Clean and Waterproof
- Ultra-High Performance
- High-Frequency Sealed & Welded Seams
- Fully Breathable for Enhanced Foam Performance



## Luxury Quilted Homecare Cover

- 4-Way Stretch, Anti-Shear
- High Breathability, Ideal for Cooling
- Combines Pressure Care with Homestyle Comfort
- Removable

## Advanced Protection for Safer Care

Forté Healthcare's mattress covers are designed for durability, infection control and comfort. Clinical Premiflex covers ensure rigorous cleaning with waterproof and breathable protection, while homecare covers provide comfort and luxury.

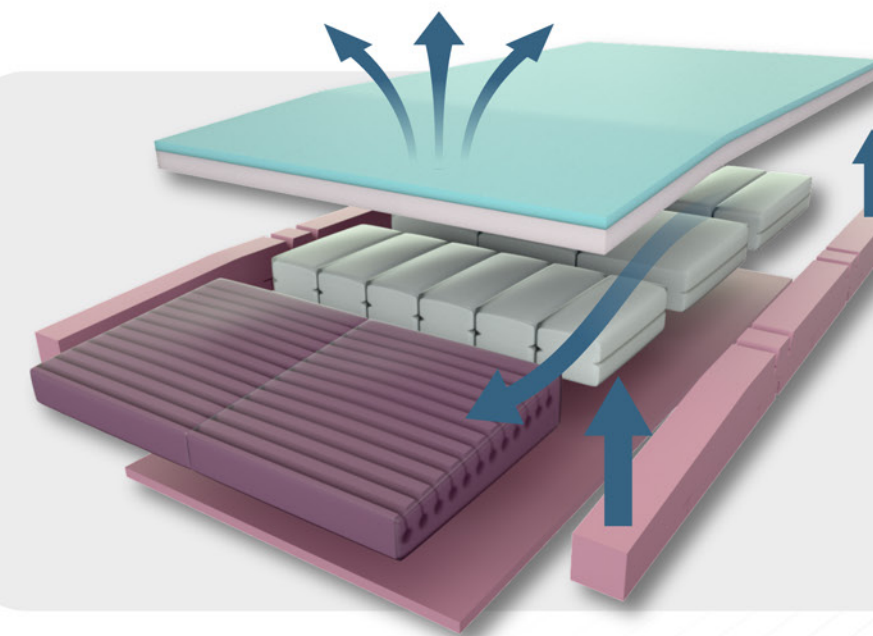


# Principles of Pressure Care



## Pressure Redistribution

- Anatomically designed air chambers contour to the body for even pressure distribution
- The seated 'Reserv-Air' function controls air movement, preventing bottoming out during extended sitting

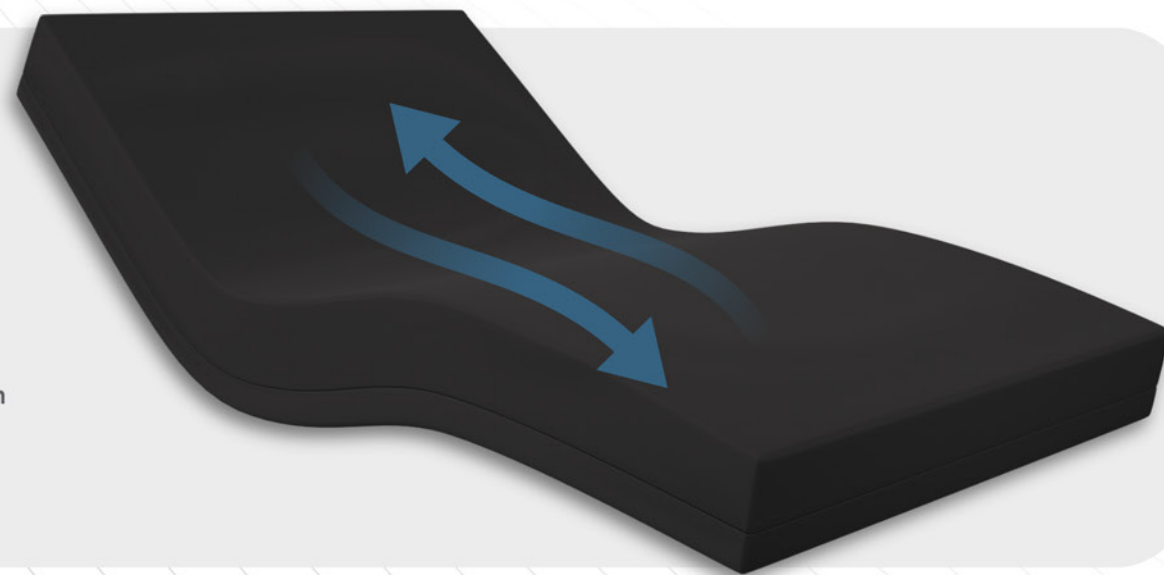


## Repositioning & Mobility

- Vertically Linked Air Cells Preventing Lateral Air Instability and a Rolling Effect
- Safety Perimeter Support with High-Density Foam for Enhanced Stability

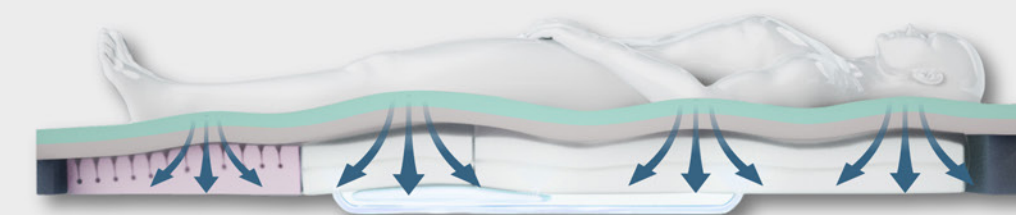
## Shear & Friction Reduction

- Internal components move independently to absorb shearing forces
- The anti-shearing inner cover prevents the top cover from gripping and stretching against the skin



## Microclimate Management

- Open-Cell, Highly Breathable Airoform Immersion Interface
- Moisture Vapour Permeable, Breathable Cover





"The Alaise mattress is a great option for clients moving off alternating air mattresses. It's firm but supportive, making repositioning easier while still keeping them comfortable. Clients in rehab love that it gives them the support they need without the noise of a pump. For regional and hard-to-service areas, the low-maintenance design has been a game-changer."

-Occupational Therapist

## Clinical Pressure Analysis

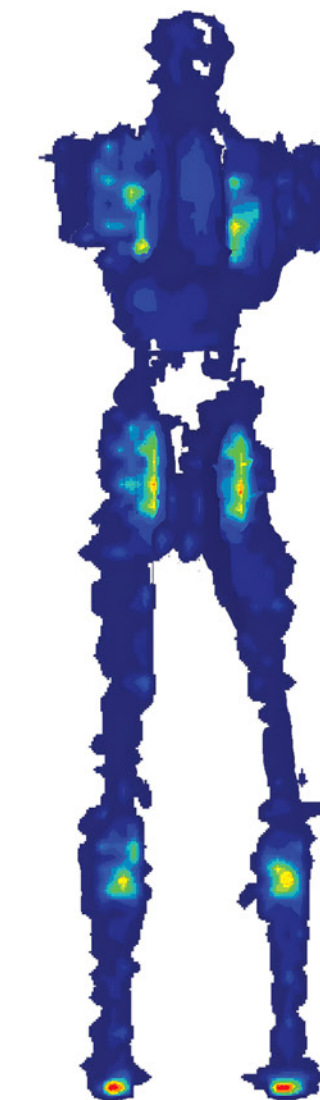
Pressure mapping for the Alaise mattress is conducted using the RESNA/NPIAP 50th Percentile Male Manikin. This specialised test manikin features emphasised bony prominences to accurately replicate peak pressure points, excluding the impact of soft tissue. This enables precise and thorough testing, ensuring the mattress delivers superior pressure redistribution performance.

### TEKSCAN Pressure Measurement

System	7.20C
Rows	104
Sensel Area	2.89008cm <sup>2</sup>
Micro Second	0
Sensor Type	5400D
Cols	34
Seconds per Frame	0.010319
Units	mmHg

### Pressure Mapping Parameters

Bed Surface	Alrick, 2001WMKII Series Bed
Relative Humidity	51%
Ambient Temperature	21°C
Height	178cm
Subject	81kg RESNA NPIAP 50th percentile male mannequin
Duration	6 hours on the support surface





# Custom Sizing Solutions

Size	Dimensions(mm)	Premiflex Ultra Cover
Single	1980x880x180	ALS1000-GEL
Single, Long	2030x880x180	ALSL1000-GEL
King Single	1980x1050x180	ALKS1000-GEL
King Single, Long	2030x1050x180	ALKSL1000-GEL
Extra Wide	1980x1150x180	ALEW1000-GEL
Extra Wide, Long	2030x1150x180	ALEWL1000-GEL
Double	1980x1350x180	ALD1000-GEL
Double, Long	2030x1350x180	ALDL1000-GEL
Queen	1980x1530x180	ALQ1000-GEL
Queen, Long	2030x1530x180	ALQL1000-GEL
King	1980x1850x180	ALK1000-GEL
King, Long	2030x1850x180	ALKL1000-GEL

## Manufactured in Australia, Fully Customisable

The Alaise, fully manufactured by Forté Healthcare in Armidale, Australia, is available in custom sizes with adjustable length, width, and thickness, using premium Australian and European materials.







# The Mattress Makes The Bed™

Address

10 Ribbon Gum Ave, Armidale NSW 2350

Phone

1300 731 163

Email

[sales@fortehealthcare.com.au](mailto:sales@fortehealthcare.com.au)

Web

[fortehealthcare.com.au](http://fortehealthcare.com.au)

Socials



© Copyright 2025 Forté Healthcare ALAISE V-1.1 - 3/25

