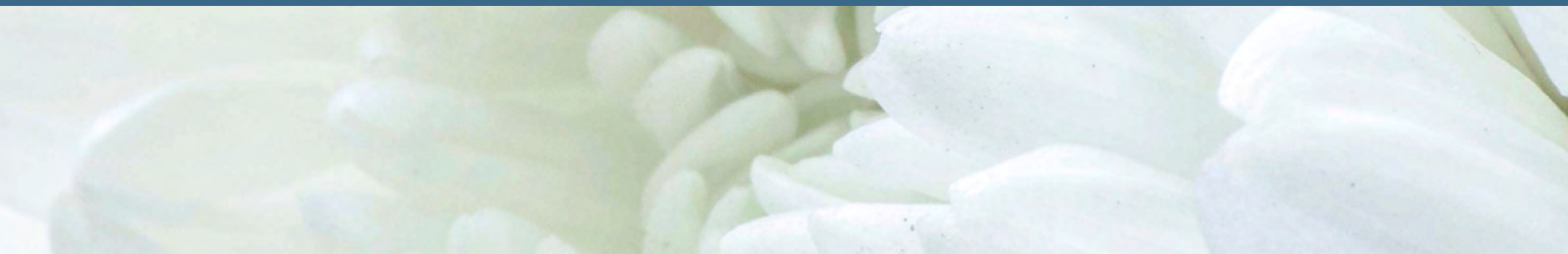




Advantiflex Classic  
Pressure Care Cover



# Advantiflex Classic Pressure Care Cover

Advantiflex covers are a tried and proven medical grade pressure care cover range suited for use in all healthcare settings. Utilising raw materials unique to Forté Healthcare produced in Belgium, the Advantiflex range offers excellent value, compliance, infection control, performance, and patient care. Pressure injury prevention is delivered through bi-directional stretch qualities and moisture vapour permeability. Standard features include High frequency sealed and welded seams, soft-touch polyurethane upper and heavy duty PVC base and the option of an integrated zipper or fully sealed and enclosed.



High durability



Excellent stretch



Fire retardant



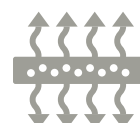
Barrier Fabric



Resistance to cleaning agents



95° High Wash Temperature



Breathable/  
vapour permeable



Anti-Microbial protection



## **ADVANTIFLEX PU1100 POLYURETHANE PRESSURE CARE UPPER MATERIAL**

- ✓ High Performance, Single Sided Polyurethane
- ✓ 4-Way/Bi-Directional stretch for shear protection, immersion & envelopment
- ✓ Vapour permeable and breathable
- ✓ Resistant to patient body fluids
- ✓ Flexible and gentle to the skin
- ✓ Standard Colour: Blue

## **HEAVY DUTY PVC1100 BASE MATERIAL**

- ✓ 100% Waterproof
- ✓ Heavy Duty, Robust & Hardwearing
- ✓ Protects foam core against the bed base
- ✓ Provides exceptional conformity and profiling to medical bed surfaces
- ✓ Reduces shearing forces by sliding against bed base as the bed base profiles
- ✓ Superior resistance to cleaning agents
- ✓ Standard Colour: Grey

## **CLEANING AND CARE**

- ✓ 1,000ppm disinfection chemical suitability
- ✓ Wipe clean
- ✓ Stain Resistant
- ✓ Anti-microbial protected

## **COMPLIANCE**

- ✓ Fire retardant, meets BS 6807 ignition source 5 and BS 7175 ignition source 5 standards
- ✓ Anti-microbial protected
- ✓ All seams high frequency welded, no exposed sewn seams
- ✓ Meets and Exceeds Facility Requirement
- ✓ Materials manufactured in Belgium, to Forté specification

## **CONSTRUCTION**

- ✓ All seams high frequency sealed & welded
- ✓ 180° / two-sided integrated zipper
- ✓ Waterfall Fluid Penetration Flap
- ✓ TGA Compliant Product Labelling

## **INTEGRATED ZIPPER**

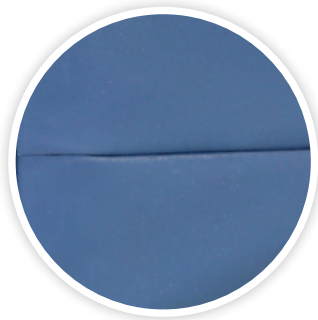
- ✓ 180° / Two-Sided Zipper
- ✓ Allows easy cover removal
- ✓ Robust and durable
- ✓ High frequency welded attachment for optimal protection against fluid ingress

## **WATERFALL ZIPPER PROTECTION FLAP**

- ✓ Provides additional protection against fluid ingress through zipper
- ✓ Meets infection control guidelines

## **HIGH FREQUENCY SEALED AND WELDED SEAMS**

- ✓ Electromagnetically fused seams protecting against risk of penetration of fluid
- ✓ Meets and exceeds infection control requirements
- ✓ Reinforced with additional heavy duty stitching at stress points
- ✓ 100% Sealed to prevent ingress of fluid or infection



# OPTIONS

## FULLY SEALED & ENCLOSED

- ✓ No-Zipper
- ✓ All seams welded and 100% waterproof to prevent ingress of fluid and infection (high frequency sealed and welded seams)
- ✓ Ultimate core durability and protection,
- ✓ Used for mental health - protects foam core against willful damage
- ✓ Used in high risk infection control applications
- ✓ Usually manufactured with an integrated pressure relief system

## CARRY HANDLES

- ✓ Fits to side of Mattress Cover for easy access whilst Mattress is on the bed
- ✓ Internal Reinforcement for Longevity
- ✓ Close Mount Design Significantly Reduces Risk of Getting Caught on Other Patient Care Equipment
- ✓ Fully Sealed Non-Absorbent and Wipe-Clean for Infection Control
- ✓ Very Strong and Flexible for Performance and Durability

## CUSTOM PRINTING

- ✓ Print ward location, facility name, asset number or any other details to track and control where your mattress gets used
- ✓ Audit register
- ✓ Print additional care information specific to your facility
- ✓ Custom branding available
- ✓ Full colour, indelible, digital system providing excellent flexibility and versatility

## EVACUATION SYSTEMS

- ✓ fully Integrated / Built-in Forté Premium Assure Evacuation System
- ✓ standard Forté evacuation system accessory
- ✓ Contact Forté directly for further details

## CUSTOM ZIPPER

- ✓ up to 360° / Four-Sided Zipper
- ✓ Allows easy cover removal
- ✓ Robust and durable
- ✓ High frequency welded attachment for optimal protection against fluid ingress
- ✓ Other custom zippers available - contact Forté and provide them with the details of what you require. i.e. water resistant, invisible.



# FORTE ADVANTIFLEX™ PU1100 POLYURETHANE COATED 4-WAY STRETCH VAPOUR PERMEABLE FABRIC

## Typical Applications

General Medical Mattress Cover  
 Aged Cared Mattress Covers  
 General Hospital Ward Mattress Covers

## Features & Benefits

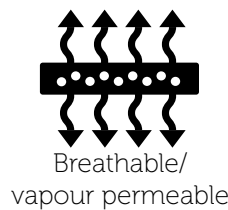
Excellent Stretch	Reduces 'Hammocking' and material tension, Lowers interface pressure
Breathable/Vapour Permeable	Wicks away moisture from patients skin and reduces heat providing for improved skin micro-climate conditions.
Excellent HF Welding Compatibility	Allows covers to be sealed against fluid ingress at seams
Barrier Fabric	Allows care staff to 'Wipe-Clean', prevents ingress of body fluids*
95° High Wash Temperature	Enhances infection control



High durability



Excellent stretch



Breathable/  
vapour permeable



Anti-Microbial  
protection



Barrier Fabric



Excellent HF  
welding capacity



95° High Wash  
Temperature



Fire retardant

Total Weight	175 [±10] g/m <sup>2</sup>	ISO 3801/5 1977
Weight of Fabric [PA]	85 [±5] g/m <sup>2</sup>	ISO 3801/5 1977
Weight of Coating [PU]	90 [±5] g/m <sup>2</sup>	ISO 3801/5 1977
Breaking Strength Warp	300 N/5cm	ISO 13934 1999
Breaking Strength Weft	160 N/5cm	ISO13934 1999
Breaking Extension Warp	90%	ISO13934 1999
Breaking Extension Weft	220%	ISO13934 1999
Tear Strength Warp	35 N	ISO 4674A1 1977
Tear Strength Weft	30 N	ISO 4674A1 1977
Adhesion Warp	18 N/22mm	DIN 53357 1982
Adhesion Weft	20 N/22mm	DIN 53357 1982
Waterproofness before washing	OK: 2000 G M D mm	ISO 811:1981
Waterproofness after washing	OK 2000 G M D mm	ISO 811:1981
Shrinkage After Washing Warp [95°C]	0 [±6] %	ISO 5077 1984
Shrinkage After Washing Weft [95°C]	0 [±3] %	ISO 5077 1984
Flammability	OK: Crib 5	BS 7175 (1989)
Breathability 37°C / 65% R.H	600 g/m <sup>2</sup> /24h	INVERTED CUP
Mold and fungal resistance	OK:	
Cleaning and care:	Machine washable at 95°C. Do not bleach. Tumble dry low. Do not iron. Dry cleanable.	

# FORTÉ Heavy Duty PVC1100 Fabric

## Typical Applications

General Medical Mattress Cover Bases  
 Aged Care Mattress Cover Bases  
 General Hospital Ward Mattress Base Covers

Excellent HF Welding Compatibility	Allows covers to be sealed against fluid ingress at seams
100% Waterproof	Allows care staff to 'Wipe-Clean', effective barrier against fluid ingress
Fire Retardant	Meets hospital and medical facility requirements



High durability



Waterproof



Fire retardant



Excellent HF welding capacity



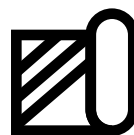
Anti-Static



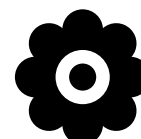
Anti-Microbial protection



Anti-Bacterial



Barrier Fabric



Hypoallergenic

Property	Result	Test Method
Description	Polyester fabric with PVC both sides.	
Weight	±380 g/m <sup>2</sup> (± 5%)	ASTM D3776
Width	220cm	
Roll Length	50m	
Microbial	Bacteria & Mite Resistant	New York State 63 Test
Hydro (psi)	323 (face) x 340 (reverse)	ASTM D7551/A
Fire Standard	PASS	ASTM D6413 / AS1441.13-1973
Ignitibility	14	AS1530.3-1999
Spread of Flame	0	AS1530.3-1999
Heat Evolved	0	AS1530.3-1999
Smoke Developed	5	AS1530.3-1999
Grab tensile (lbs)	215 (warp) x185 (weft)	ASTM D5034
Tongue Tear (lbs)	79 (warp) x 78 (weft)	ASTM D2261
Adhesion (lbs/in <sup>2</sup> )	Good	ASTM D751
Cleaning & Care:	Machine washable 40°C Do not bleach Do not iron Do not dry-clean Do not tumble dry	