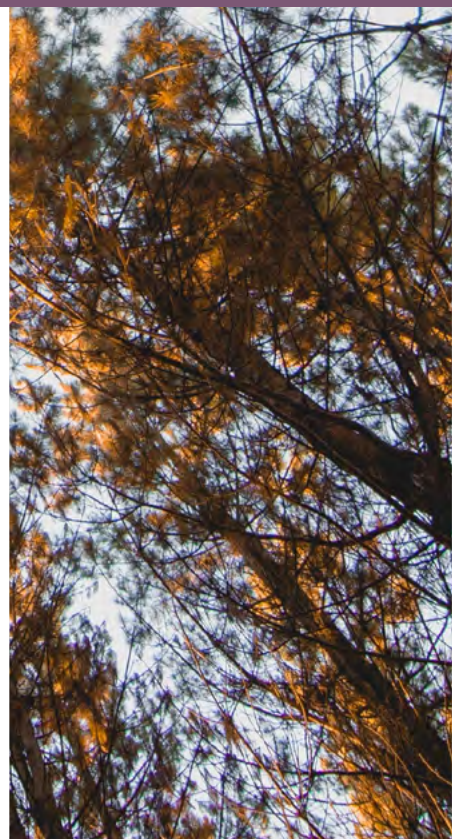
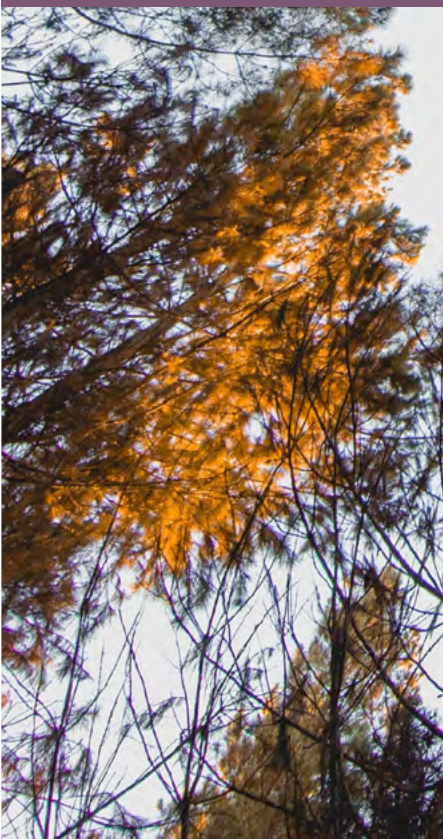


PREMIFLEX CLASSIC PREMIUM PRESSURE CARE COVER



MEDICAL MATTRESS EXPERTS

Premiflex Classic Premium Pressure Care Cover

The Forté Premiflex Classic Cover provides superior infection control, hygiene, and high performance within demanding care settings. Standard features include a Belgium made, Halogen Free, 4-Way Stretch Polyurethane Interface, which is Moisture Vapour Permeable and Anti-Shearing. The heavy-duty upgraded PVC base material protects against premature cover deterioration which can result from adjustable medical bed platforms.





PREMIFLEX PREMIUM PFPU1100 POLYURETHANE PRESSURE CARE UPPER MATERIAL

- ✓ High Performance, Single Sided Polyurethane
- ✓ 4-Way/Bi-Directional stretch for shear protection, immersion & envelopment
- ✓ Vapour permeable and breathable
- ✓ Resistant to patient body fluids
- ✓ Flexible and gentle to the skin
- ✓ Superior resistance to cleaning agents
- ✓ Standard Colour: Purple/Grape



HEAVY DUTY PVC1120 BASE MATERIAL

- ✓ 100% Waterproof
- ✓ Heavy Duty, Robust & Hardwearing
- ✓ Protects foam core against the bed base
- ✓ Provides exceptional conformity and profiling to medical bed surfaces
- ✓ Reduces shearing forces by sliding against bed base as the bed base profiles
- ✓ Superior resistance to cleaning agents
- ✓ Standard Colour: Grey



CLEANING AND CARE

- ✓ 10,000ppm disinfection chemical suitability
- ✓ Wipe clean
- ✓ Stain Resistant
- ✓ Anti-microbial protected

COMPLIANCE

- ✓ Fire retardant, meets BS 6807 ignition source 5 and BS 7175 ignition source 5 standards
- ✓ Anti-microbial protected
- ✓ All seams high frequency welded, no exposed sewn seams
- ✓ Meets and Exceeds Facility Requirement
- ✓ Materials manufactured in Belgium, to Forté specification

CONSTRUCTION

- ✓ All seams high frequency sealed & welded
- ✓ 180° / two-sided integrated zipper
- ✓ Waterfall Fluid Penetration Flap
- ✓ TGA Compliant Product Labelling



WATERFALL ZIPPER PROTECTION FLAP

- ✓ Provides additional protection against fluid ingress through zipper
- ✓ Meets infection control guidelines

INTEGRATED ZIPPER

- ✓ 180° / Two-Sided Zipper
- ✓ Allows easy cover removal
- ✓ Robust and durable
- ✓ High frequency welded attachment for optimal protection against fluid ingress



HIGH FREQUENCY SEALED AND WELDED SEAMS

- ✓ Electromagnetically fused seams protecting against risk of penetration of fluid
- ✓ Meets and exceeds infection control requirements
- ✓ Reinforced with additional heavy duty stitching at stress points
- ✓ 100% Sealed to prevent ingress of fluid or infection

OPTIONS

FULLY SEALED & ENCLOSED

- ✓ No-Zipper
- ✓ All seams welded and 100% waterproof to prevent ingress of fluid and infection (high frequency sealed and welded seams)
- ✓ Ultimate core durability and protection,
- ✓ Used for mental health - protects foam core against willful damage
- ✓ Used in high risk infection control applications
- ✓ Usually manufactured with an integrated pressure relief system

CARRY HANDLES

- ✓ Fits to side of Mattress Cover for easy access whilst Mattress is on the bed
- ✓ Internal Reinforcement for Longevity
- ✓ Close Mount Design Significantly Reduces Risk of Getting Caught on Other Patient Care Equipment
- ✓ Fully Sealed Non-Absorbent and Wipe-Clean for Infection Control
- ✓ Very Strong and Flexible for Performance and Durability



CUSTOM PRINTING

- ✓ Print ward location, facility name, asset number or any other details to track and control where your mattress gets used
- ✓ Audit register
- ✓ Print additional care information specific to your facility
- ✓ Custom branding available
- ✓ Full colour, indelible, digital system providing excellent flexibility and versatility

EVACUATION SYSTEMS

- ✓ fully Integrated / Built-in Forté Premium Assure Evacuation System
- ✓ standard Forté evacuation system accessory
- ✓ Contact Forté directly for further details



CUSTOM ZIPPER

- ✓ up to 360° / Four-Sided Zipper
- ✓ Allows easy cover removal
- ✓ Robust and durable
- ✓ High frequency welded attachment for optimal protection against fluid ingress
- ✓ Other custom zippers available - contact Forté and provide them with the details of what you require. i.e. water resistant, invisible.



FORTE PREMIFLEX™ PFPU1100 PREMIUM POLYURETHANE COATED 4-WAY STRETCH VAPOUR PERMEABLE FABRIC

Typical Applications

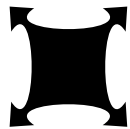
- Acute Care & ICU Covers
- Mental Health
- Homecare
- Aged Care
- General Hospital Ward Mattress Covers
- Emergency department coverings

Features & Benefits

High Resistance to Cleaning Agents, 10000ppm Active Chlorine resistance	Provides highest available infection control
Breathable/Vapour Permeable	Wicks away moisture from patients skin and reduces heat providing for improved skin micro-climate conditions.
Excellent HF Welding Compatibility	Allows covers to be sealed against fluid ingress at seams
Barrier Fabric	Allows Care Staff to 'Wipe-Clean', prevents ingress of body fluids*
95° High Wash Temperature	Enhances infection control
Excellent Stretch	Reduces 'Hammocking' and material tension, Lowers interface pressure.
Fire Retardant	Meets hospital and medical facility requirements



High durability



Excellent stretch



Fire retardant



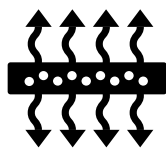
Excellent HF welding capacity



Anti-Microbial protection



Barrier Fabric



Breathable/vapour permeable



95° High Wash Temperature



Resistance to cleaning agents

FORTE PREMIFLEX™ PFPU1100 POLYURETHANE COATED 4-WAY STRETCH VAPOUR PERMEABLE FABRIC

Feature/Characteristic	Result	Test Method
Description	Weft knitted polyamide with a PU Transfer coating	N/A
Composition	Polyamide / Polyurethane	N/A
Weight	310 g/m ² (+/-20) g/m ²	ISO3801/5: 1977
Width	2100-2150mm	
Breaking Strength Warp	1000 N/5cm	ISO13934: 1999
Breaking Strength Weft	350 N/5cm	ISO13934: 1999
Breaking Extension Warp	90%	ISO13934: 1999
Breaking Extension Weft	Weft: 300%	ISO13934: 1999
Tear Strength Warp	80N	ISO 4674A1 1977
Tear Strength Weft	80N	ISO 4674A1 1977
Adhesion Warp	15 N/22mm	DIN 53357 1982
Adhesion Weft	15 N/22mm	DIN 53357 1982
Waterproofness before washing	OK: 2000 G M D mm	ISO 811:1981
Waterproofness after washing	OK 2000 G M D	ISO 811:1981
Water Vapour Permeability	300g/m ² /24hrs.	Inverted Cup
Shrinkage After Washing Warp	0 [+/-5] %	ISO 5077 1984
Shrinkage After Washing Weft	0 [+/-2] %	ISO 5077 1984
Flammability	OK: Crib 5	BS 7175 (1989)
Maximum Wash Temperature	95°C	N/A
Cleaning and care:	Wipe with mild detergent. Wash or dry-clean using detergent up to 75°C. For disinfection use sodium hypo-chlorite at no more than 10,000 parts per million of active chlorine. Do not use biological or phenol-based cleaners. Wash and dry completely before storage. Some surface wrinkling may occur.	



FORTÉ Heavy Duty PVC1120 Fabric

Typical Applications

General Medical Mattress Heavy Duty Cover Bases
Aged Care Mattress Heavy Duty Cover Bases
General Hospital Ward Mattress Heavy Duty Base Covers

Features & Benefits

Excellent HF Welding Compatibility	Allows covers to be sealed against fluid ingress at seams
100% Waterproof	Allows care staff to 'Wipe-Clean', effective barrier against fluid ingress
Fire Retardant	Meets hospital and medical facility requirements
Excellent Flexibility and Cracking Resistance	Greater durability and increased infection control



High durability



Waterproof



Fire retardant



Excellent HF welding capacity



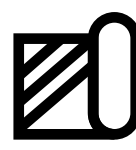
Anti-Static



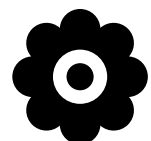
Anti-Microbial protection



Anti-Bacterial



Barrier Fabric



Hypoallergenic

FORTE PVC1120 FABRIC

Property	Result	Test Method
Composition	Polyester fabric with PVC both sides.	
Weight	±580 g/m ² (±5%)	ASTM D3776
Width	220cm	
Roll Length	30m	
HF Weldable	Yes	
Microbial	Bacteria & Mite Resistant	New York State 63 Test
Hydro (kPA)	>250	AS2001.2.17-1987
Fire Standard	PASS	AS1441.13-1973 / BS6807 Crib 5
Breaking Force (N/50mm)	1136 (length) x 1387 (width)	AS2001.2.3.1-2001
Elongation (%)	26.8 (length) x 25.7 (width)	AS2001.2.3.1-2001
Tongue Tear (N)	220 (length) x 233 (width)	AS2001.2.10-1986
Adhesion (N/50mm)	62.4 (warp) x 67.6 (weft)	AS4878.8-2001
Cleaning & Care:	Machine Washable 40°C Do not bleach Do not tumble dry Do not dry clean Do not Iron	