



forté  
HEALTHCARE

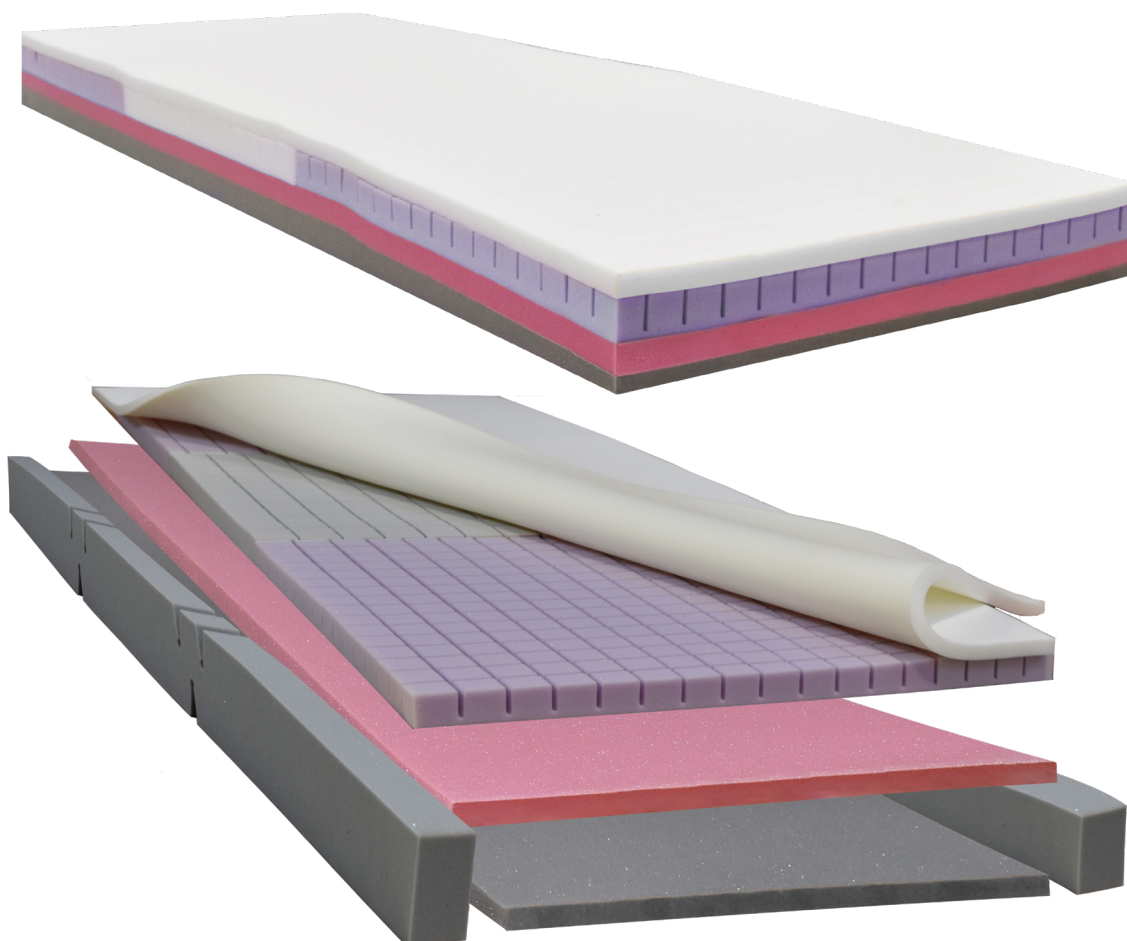


# SOVEREIGN S3

High Care Advanced Lightweight Pressure Care Mattress

The Sovereign S3 mattress is emerging as the most popular mattress in the facility space meeting the needs of all departments within a facility and compatible with almost any bed platform on the market.

Constructed with unique and extensive features designed by Forté Healthcare ensures the ultimate blend of longevity, pressure care and comfort, versatility, safety and value. The exclusive combination of high-performance foam and foam technology is such that the Sovereign S3 is light-weight making it easy and safe for staff to carry and clean, without compromising on longevity and support. The Sovereign S3 mattress provides pressure care and protection for a wide variety of patients from 30-250kg and low-high risk of pressure injury.



## FEATURES

---



### AIROFORM MEMORY IMMERSION INTERFACE LAYER

- » High Temperature Stability to deliver consistent immersion, performance and comfort
  - » Maximises Patient contact with Support Surfaces Providing Pressure Redistribution
  - » Alleviates localised pressure points
  - » Depth calibrated to maximise functionality and patient mobility
  - » Prevents collapse, tearing and side-ways twisting of second layer to ensure patient receives full immersion benefit
  - » Unique Airoform Breathe ventilation system minimises heat entrapment and enhances core circulation providing a cooler sleep surface
  - » Visco-elastic/Memory Foam cell structure provides low-shear surface
  - » Firmness: Soft
-



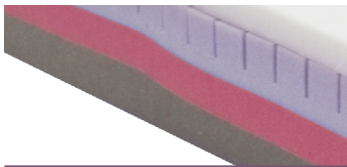
# FOAM CORE FEATURES

---



## TRIPLE GRADE, ZONED, SECONDARY PROFILED IMMERSION REGION

- » Ultra-High Density Sacral Support Zone with individual cells that deflect and conform to bony prominences
- » Medium Size Profile Cut Cells within Scapular Region
- » Small Profile Cut Cells within Heel Region
- » Individual cells together with visco-elastic immersion interface effectively encapsulate bony prominences
- » Calibrated to provide tailored immersion



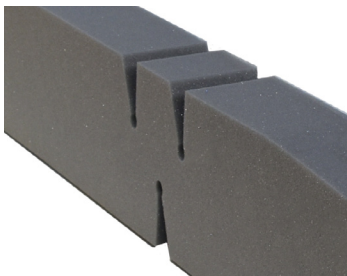
## SUPPORTIVE 3RD LAYER

- » Provides Postural Comfort and Transfer Assistance
- » Protects Second Layer from Over Compression thus achieving greater longevity



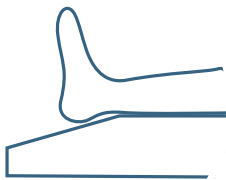
## PREMIUM FIRM FOUNDATION LAYER

- » Provides protection against 'bottoming-out' during transfer, repositioning and whilst in the inclined/fowler position
- » Provides exceptional comfort, support for repositioning and patient care



## HINGED STRENGTHENED SIDES

- » Increase lateral stability of support surface
- » Improves patient safety and encourages central patient positioning
- » Make patient transfers easier
- » Unique hinge profile reduces foam fatigue and allows the mattress to easily conform to varied bed positions
- » Enables ease of primary patient care



## SLOPED HEEL PRESSURE TRANSFER ZONE

- » Enhances pressure redistribution & protection for critical at-risk heel region
- » Offloads pressure from the patients heels and transfers it to calf area
- » Unobtrusive, does not require any adjustment



## LIGHTWEIGHT

- » Unique Lightweight design allows staff to easily carry / manoeuvre mattress
- » Does not 'bend' and is not 'floppy' to carry
- » Averts WH&S concerns with staff carrying and moving the mattress

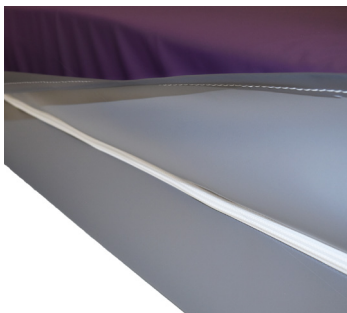
# COVER FEATURES

---



## PREMIFLEX PREMIUM PRESSURE CARE UPPER MATERIAL

- » High Performance, Single Sided Polyurethane (PFPC1100)
- » 4-Way/Bi-Directional stretch for shear protection, immersion & envelopment
- » Vapour permeable and breathable
- » Resistant to patient body fluids
- » Flexible and gentle to the skin
- » Superior resistance to cleaning agents
- » Standard Colour: Purple/Grape



## HEAVY DUTY BASE MATERIAL

- » 100% Waterproof
- » Heavy Duty (PVC1120), Robust & Hard-wearing
- » Protects foam core against the bed base
- » Provides exceptional conformity and profiling to medical bed surfaces
- » Reduces shearing forces by sliding against bed base as the bed base profiles
- » Superior resistance to cleaning agents
- » Standard Colour: Grey



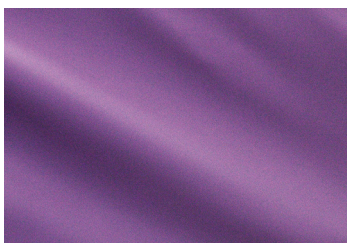
## CLEANING & CARE

- » 10,000ppm disinfection chemical suitability
- » Wipe clean
- » Stain Resistant
- » Anti-microbial protected



## COMPLIANCE

- » Fire retardant, meets BS 6807 ignition source 5 and BS 7175 ignition source 5 standards
- » Anti-microbial protected
- » All seams high frequency welded, no exposed sewn seams
- » Meets and exceeds facility requirements
- » Material manufactured in Belgium, to Forté specification



## FULL VAPOUR PERMEABILITY

- » Allows vapour to travel right through the cover at a controlled rate
- » Reduces risk of internal infection entrapment and optimises core micro-climate



## CONSTRUCTION

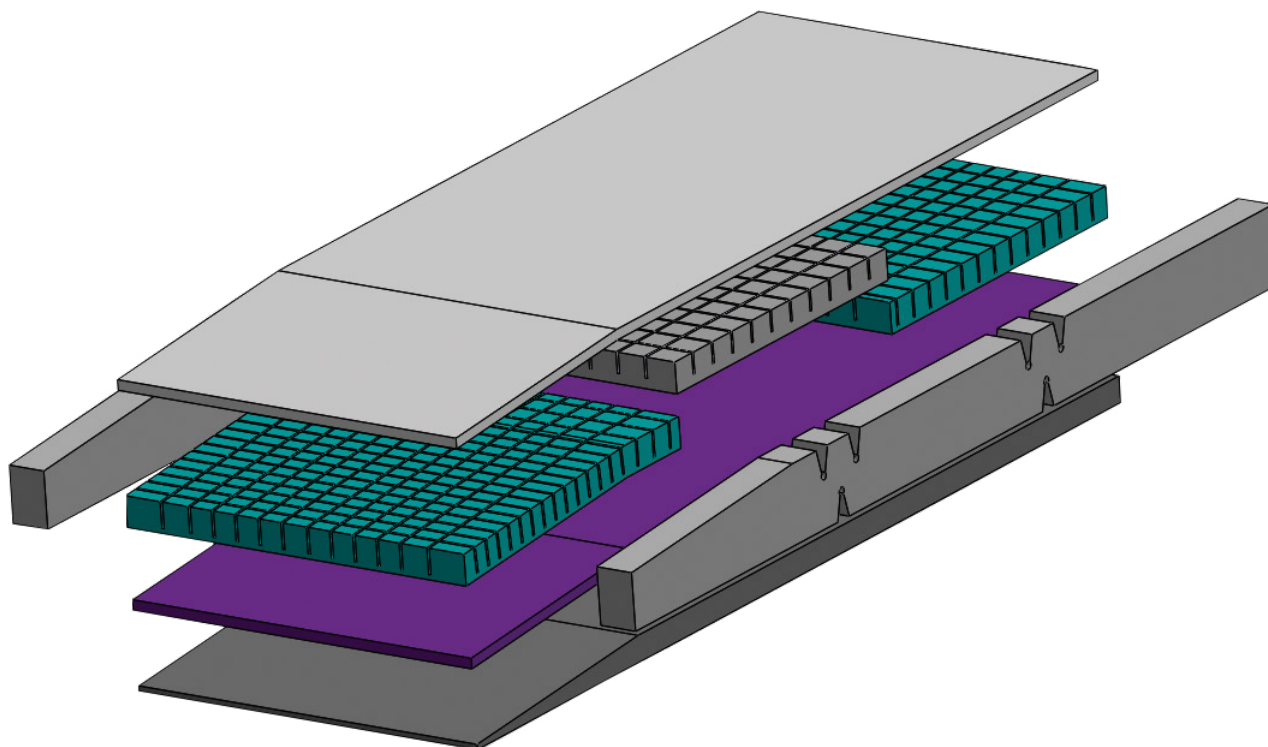
- » All seams high frequency sealed & welded
- » 180° / two-sided integrated zipper
- » Waterfall Fluid Penetration Flap
- » TGA Compliant Product Labelling



## WATERFALL ZIPPER PROTECTION FLAP

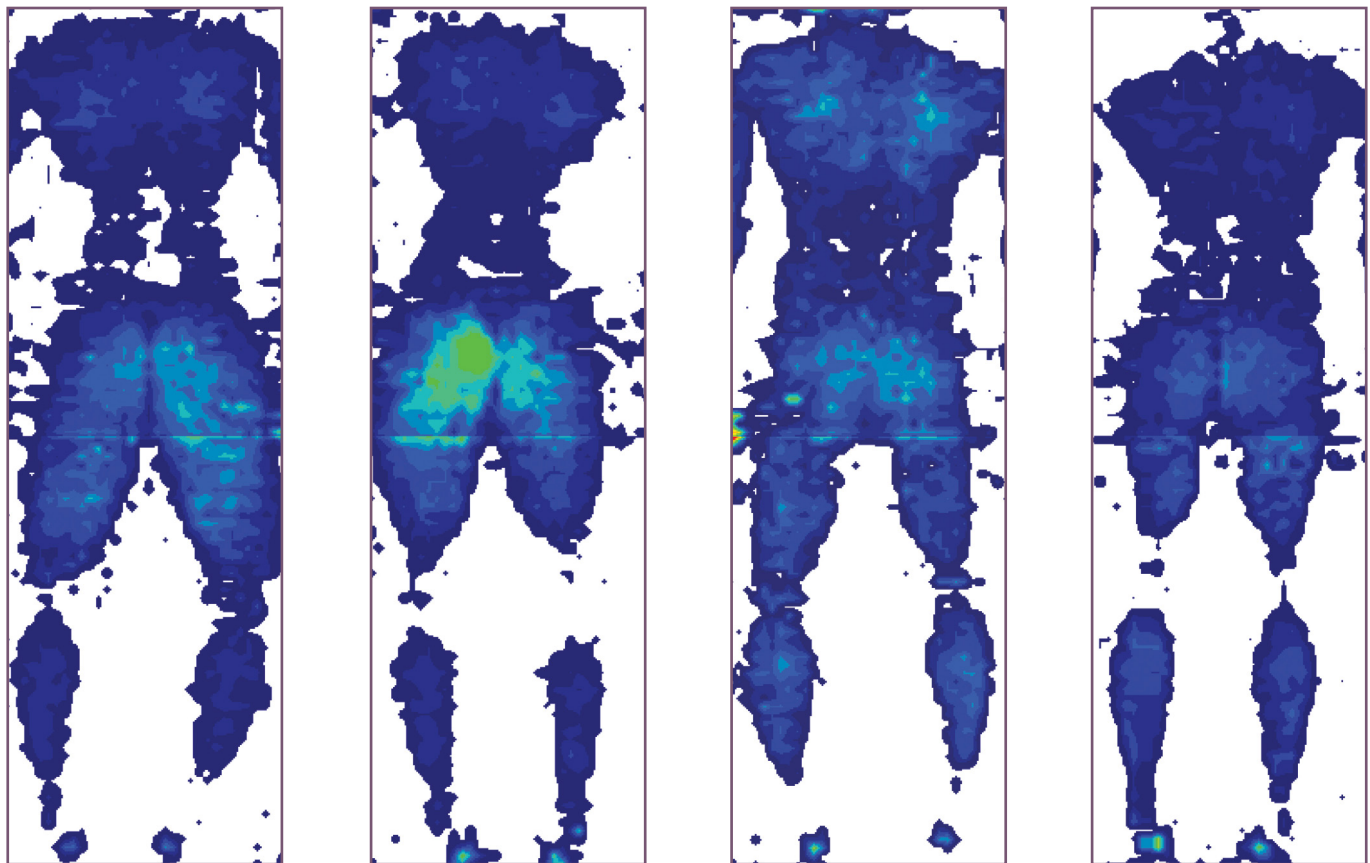
- » Protects additional protection against fluid ingress through zipper
- » Meets infection control guidelines

# SPECIFICATIONS



Code	Dimensions (L x W x D mm)	Size	Product Ratings	
<b>S3S1000</b>	1980x880x150	Single	<b>Shear &amp; Friction</b>	0 ———●———— 5
<b>S3SL1000</b>	2030x880x150	Single, Long		
<b>S3KS1000</b>	1980x1050x150	King Single	<b>Repositioning</b>	0 ———●———— 5
<b>S3KSL1000</b>	2030x1050x150	King Single, Long		
<b>S3EW1000</b>	1980x1150x150	Extra-Wide	<b>Infection Control</b>	0 ———●———— 5
<b>S3EWL1000</b>	2030x1150x150	Extra-Wide, Long		
<b>S3D1000</b>	1980x1350x150	Double	<b>Firmness</b>	0 ———●———— 5
<b>S3DL1000</b>	2030x1350x150	Double, Long		
<b>S3Q1000</b>	1980x1530x150	Queen	<b>Moisture &amp; Microclimate</b>	0 ———●———— 5
<b>S3QL1000</b>	2030x1530x150	Queen, Long		
<b>S3K1000</b>	1980x1850x150	King	<b>Performance &amp; Longevity</b>	0 ———●———— 5
<b>S3KL1000</b>	2030x1850x150	King, Long		
-	Customise	To suit any bed platform	<b>Mobility &amp; Function</b>	0 ———●———— 5
<b>Cover</b>		<b>Warranty</b>		
Premiflex Classic		5 Year Foam 4 Year Cover	<b>Pressure Care Rating</b>	MEDIUM - HIGH RISK
<b>Therapeutic Weight Range</b>			<b>Applications</b>	
30 - 250kg			» Hospital Wards » Aged Care » Palliative Care » Homecare	

# CLINICAL PRESSURE MAPPING



FOWLER - Elevated Legs

FOWLER

SUPINE - Elevated Legs

SUPINE



## TEKSCAN PRESSURE MEASUREMENT

System: 7.20C	Rows: 104	Sensel Area: 2.89008cm <sup>2</sup>	Micro Second: 0
Sensor Type: 5400D	Cols: 34	Seconds per Frame: 0.010319	Units: mmHg

## PRESSURE MAPPING PARAMETERS

Bed Surface: Alrick, 5 Function Electric Hospital Bed	Subject: 98kg, Male	Height: 188cm
Duration: Pressure Mapping was captured after 6 hours of subject laying upon support surface		Ambient Temperature: 21°C

Pressure Mapping measures the interface pressure between a support surface and its user. At Forté Healthcare we use the Tekscan Pressure Measurement System, a thin and flexible sensor which ensures minimal interference to the surface performance. The System helps to measure the pressure redistribution of a human body on the surface of our mattresses.

The Pressure Mapping images above demonstrate the pressure distribution of a 98kg male over a 6-hour period, shown in a variety of positions on the *Sovereign S3 High Care Advanced Lightweight Pressure Care Mattress*.

Pressure Mapping aids us in the Research & Development of our products, allowing a close insight into areas of peak pressure on the body. Counter-control measures can therefore be taken to ensure peak pressures are successfully redistributed, thus mitigating the risk of pressure injuries.

Pressure Mapping is a commonly used tool in attaining clinical data on interface pressures, however Forté Healthcare acknowledges *"it cannot be used to conclude on internal stresses and the stress concentration levels in deep vascularized tissues, particularly muscles."*<sup>[1]</sup>

The example pressure mapping provided by Forté Healthcare is only intended for use as a clinical aid, *"rather than a replacement to clinical judgement."*<sup>[2]</sup>

[1] A. Gefen & J. Levine (2007) The false premise in measuring body-support interface pressures for preventing serious pressure ulcers, *Journal of Medical Engineering & Technology*, 31:5, 375-380, DOI: 10.1080/03091900601165256  
 [2] Dunk AM & Gardner A (2016) Body shape: a predictor for pressure injury risk, *Wound Practice and Research*, 24:2, 92-98, ISSN 2202-9729





GLOBAL TECHNOLOGY  
AUSTRALIAN MADE

All mattresses are made by  
Forté Healthcare in Armidale  
NSW in accordance with all  
Australian manufacturing  
and clinical standards.