



forté
HEALTHCARE

FOURFRONT FS6

Seclusion and Isolation Care All-in-One Mattress



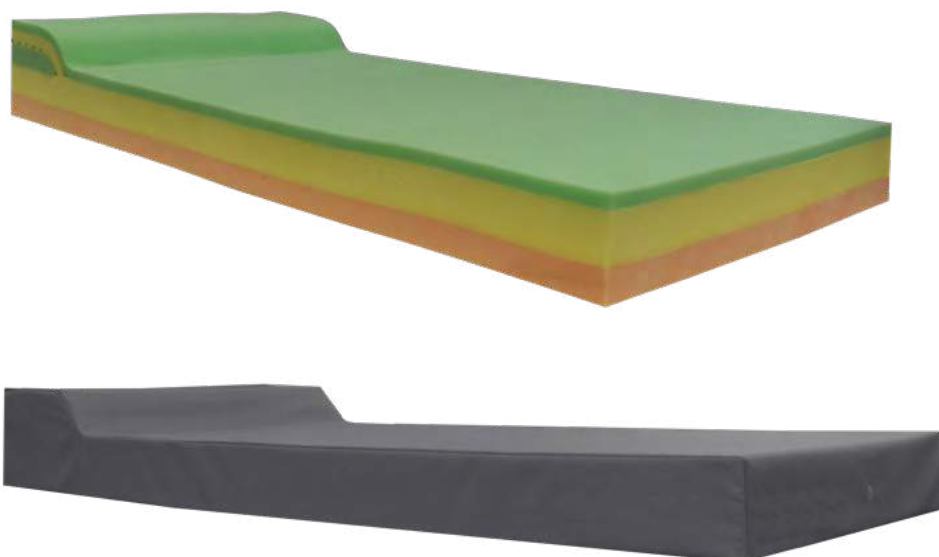
The Fourfront Range delivers ultimate patient care and support surface versatility within the mental health setting. Fourfront Static Care Mental Health Support Surfaces are the superior choice for demanding mental health ward applications.

Tried and trusted in facilities nationwide, the Fourfront range combines outstanding durability, 4-way rotational ability, a high standard and consistency of care and excellent value.

Fourfront Mattresses incorporate fully sealed and enclosed covers to protect the foam core. All foams used meet fire retardant standards for compliance within Mental Healthcare.



Fourfront FS6 Seclusion and Isolation Care All-in-One Mattress



/ Fourfront FS6

CODE	DIMENSIONS (MM)	SIZE
FS6S1000	1980x880x150	Single
FS6SL1000	2030x880x150	Single, Long
FS6KS1000	1980x1050x150	King Single
FS6KSL1000	2030x1050x150	King Single, Long
FS6EW1000	1980x1150x150	Extra-Wide
FS6EWL1000	2030x1150x150	Extra-Wide, Long
FS6D1000	1980x1350x150	Double
FS6DL1000	2030x1350x150	Double, Long
FS6Q1000	1980x1530x150	Queen
FS6QL1000	2030x1530x150	Queen, Long
FS6K1000	1980x1850x150	King
FS6KL1000	2030x1850x150	King, Long
	Customisable	CAN BE MADE TO SUIT ANY BED
THERAPEUTIC WEIGHT RANGE*	150KG	
APPLICATIONS	✔ MENTAL HEALTH WARDS ✔ MENTAL HEALTH FACILITIES ✔ HOME CARE	
WARRANTY**	5-YEAR FOAM CORE, 4-YEAR COVER (12-MONTH WARRANTY IN MENTAL HEALTH APPLICATION)	
STANDARD COVER TYPE	FULLY SEALED & ENCLOSED HEAVY DUTY PVC 2	

Features

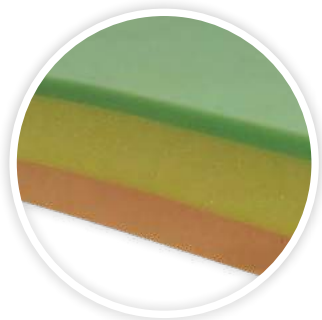


INTEGRATED PILLOW SECTION

- ✓ Enhances patient comfort
- ✓ Dual density inverted convolute construction
- ✓ Tamper resistant
- ✓ High performance foam
- ✓ Meets BS5852 source 5 specification

PATIENT INTERFACE LAYER

- ✓ Enhances patient comfort to deliver superior rest
- ✓ Premium grade, high performance foam
- ✓ Meets BS5852 (fire retardant) source 5 specification



PREMIUM POSTURAL SUPPORT LOWER CORE REGION/FOUNDATION LAYERS

- ✓ Open cell high quality foam
- ✓ Provides protection against 'bottoming-out'
- ✓ Provides exceptional comfort and postural support for repositioning and patient care
- ✓ Meets BS5852 (fire retardant) source 5 specification

SHEAR & FRICTION:



REPOSITIONING:



INFECTION CONTROL:



FIRMNESS:



MOISTURE & MICRO-CLIMATE:



PERFORMANCE & LONGEVITY:



MOBILITY & FUNCTION:



PRESSURE CARE RATING:

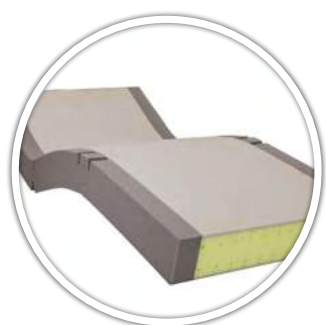
LOW RISK

Standard Custom Options



MENTAL HEALTH SPECIFICATION COVER OPTIONS

- ✓ Pressure Care, Vapour Permeable, Polyurethane Material
- ✓ Non-Pressure Care, Damaged Resistant, Waterproof, PVC Material



SIZE

- ✓ Customisable to any size - width, length, height
- ✓ Contact Forté Healthcare

DISCLAIMERS

* Optimal patient weight range for pressure care and comfort. Minimum weight capacities are to be used as a guide only, it may be the situation that patients with a lower weight than the minimum weight threshold will be suited to a surface with a greater minimum weight threshold than that of their own weight for functional and/or individual comfort purposes.

** Warranty refers to any manufacturing or product defects. Due to its nature, foam will soften and its resilience will decrease with usage and age. Contact Forté Healthcare Solutions for further specific information.



GLOBAL TECHNOLOGY
AUSTRALIAN MADE

All mattresses are made by
Forté Healthcare in Armidale NSW
in accordance with all Australian
manufacturing
and clinical standards.

