



forté
HEALTHCARE

FOURFRONT FS7

Restraint, Seclusion and Isolation Mattress



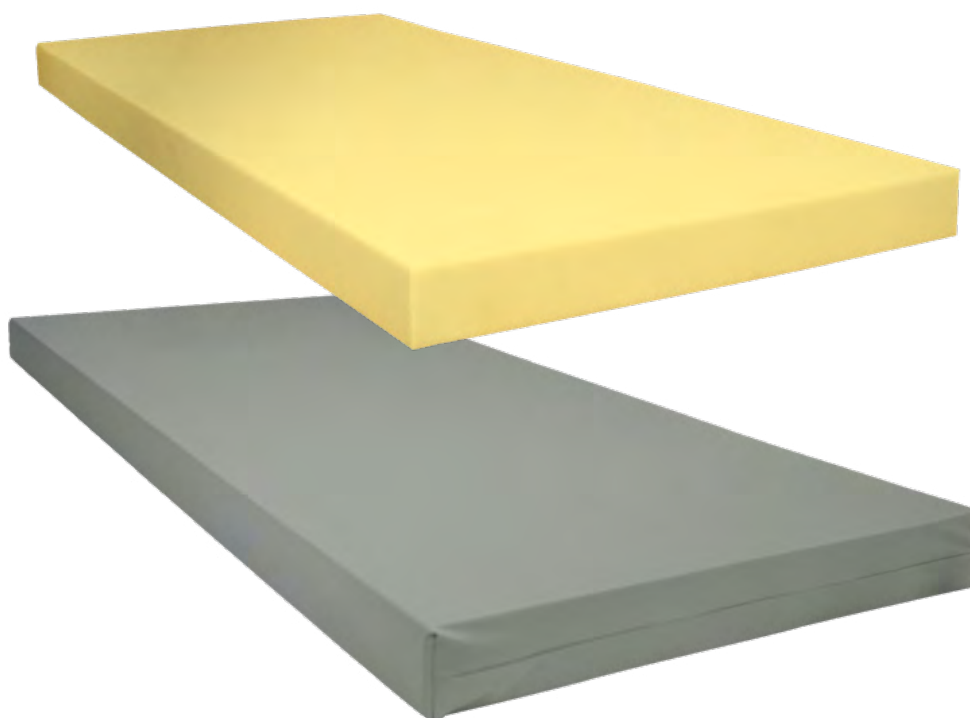
The Fourfront Range delivers ultimate patient care and support surface versatility within the mental health setting. Fourfront Static Care Mental Health Support Surfaces are the superior choice for demanding mental health ward applications.

Tried and trusted in facilities nationwide, the Fourfront range combines outstanding durability, 4-way rotational ability, a high standard and consistency of care and excellent value.

Fourfront Mattresses incorporate fully sealed and enclosed covers to protect the foam core. All foams used meet fire retardant standards for compliance within Mental Healthcare.



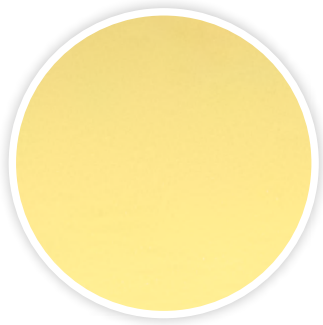
Fourfront FS7 Seclusion and Isolation Care Mattress



/ Fourfront FS7

CODE	DIMENSIONS (MM)	SIZE
FS7S1000	1980x880x150	Single
FS7SL1000	2030x880x150	Single, Long
FS7KS1000	1980x1050x150	King Single
FS7KSL1000	2030x1050x150	King Single, Long
FS7EW1000	1980x1150x150	Extra-Wide
FS7EWL1000	2030x1150x150	Extra-Wide, Long
FS7D1000	1980x1350x150	Double
FS7DL1000	2030x1350x150	Double, Long
FS7Q1000	1980x1530x150	Queen
FS7QL1000	2030x1530x150	Queen, Long
FS7K1000	1980x1850x150	King
FS7KL1000	2030x1850x150	King, Long
	Customisable	CAN BE MADE TO SUIT ANY BED
THERAPEUTIC WEIGHT RANGE*	N/A	
APPLICATIONS	✓ MENTAL HEALTH WARDS ✓ MENTAL HEALTH FACILITIES ✓ HOME CARE	
WARRANTY**	5-YEAR FOAM CORE, 4-YEAR COVER (12-MONTH WARRANTY IN MENTAL HEALTH APPLICATION)	
STANDARD COVER TYPE	FULLY SEALED & ENCLOSED HEAVY DUTY PVC 2	

Features



SUPPORTIVE FOAM CORE

- ✓ Enhances patient comfort to deliver superior rest
- ✓ Premium grade, Open Cell, high performance foam
- ✓ Meets BS5852 (fire retardant) source 5 specification
- ✓ Provides protection against 'bottoming-out' during transfer, repositioning and whilst in the inclined/fowler position

SHEAR & FRICTION:



REPOSITIONING:



INFECTION CONTROL:



FIRMNESS:



MOISTURE & MICRO-CLIMATE:



PERFORMANCE & LONGEVITY:



MOBILITY & FUNCTION:



PRESSURE CARE RATING:

LOW RISK

Standard Custom Options



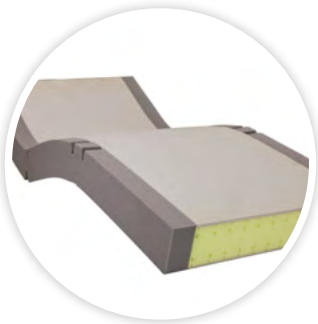
HINGED STRENGTHENED SIDES

- ✓ Increase lateral stability of support surface
- ✓ Improves patient safety and encourages central patient positioning
- ✓ Make patient transfers easier
- ✓ Unique hinge profile reduces foam fatigue and allow mattress to easily conform to varied bed positions
- ✓ Enables ease of primary patient care



MENTAL HEALTH SPECIFICATION COVER OPTIONS

- ✓ Pressure Care, Vapour Permeable, Polyurethane Material
- ✓ Non-Pressure Care, Damaged Resistant, Waterproof, PVC Material



SIZE

- ✓ Customisable to any size - width, length, height
- ✓ Contact Forté Healthcare

DISCLAIMERS

* Optimal patient weight range for pressure care and comfort. Minimum weight capacities are to be used as a guide only, it may be the situation that patients with a lower weight than the minimum weight threshold will be suited to a surface with a greater minimum weight threshold than that of their own weight for functional and/or individual comfort purposes.

** Warranty refers to any manufacturing or product defects. Due to its nature, foam will soften and its resilience will decrease with usage and age. Contact Forté Healthcare Solutions for further specific information.



GLOBAL TECHNOLOGY
AUSTRALIAN MADE

All mattresses are made by
Forté Healthcare in Armidale NSW
in accordance with all Australian
manufacturing
and clinical standards.

