



forté  
HEALTHCARE



ICON



The Icon Medium Risk Pressure Care Mattress Range provides true leadership in static pressure care in a preventative setting. Tried and trusted in facilities nation-wide, the Icon range combines outstanding durability, a high standard and consistency of care and excellent value. An extensive variety of configurations are available providing for a wide range of patient needs and requirements.



# Icon Medical Mattress Characteristics

---



**EXCELLENT  
IMMERSION**



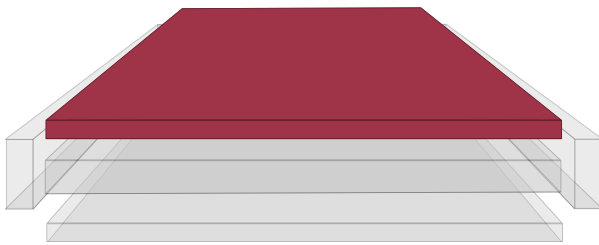
**ANATOMICAL  
SUPPORT**



**FIRM  
FOUNDATION**



**FALLS  
PROTECTION**



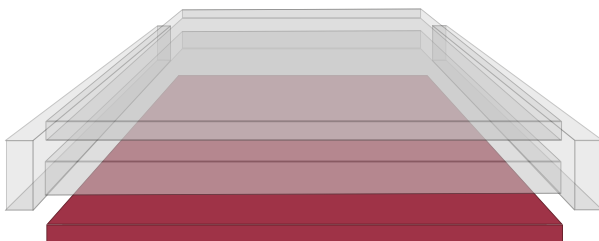
## **AIROFORM IMMERSION INTERFACE**

- ✓ Envelops 'bony prominences'
- ✓ Increases contact between surface and patient, dispersing and equalizing contact pressure
- ✓ Provides excellent conformity to individual patient body profiles



## **ANATOMICAL SUPPORT REGION**

- ✓ Provides additional immersion and envelopment
- ✓ Provides postural support for patient comfort
- ✓ Resilient to optimize function, mobility and repositioning



## **FIRM FOUNDATION AND BASE SUPPORT REGION**

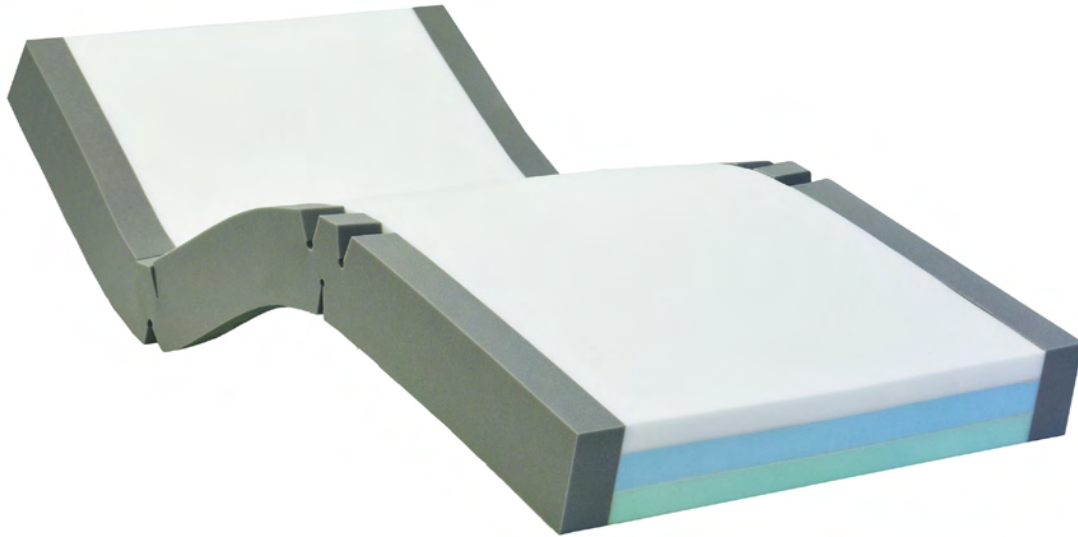
- ✓ Protects patient from 'bottoming-out' whilst in seated/semi-fowler/fowler position
- ✓ Provides enhanced support for repositioning and transfer
- ✓ Assists in primary care



## **INTEGRATED STRENGTHENED SIDES**

- ✓ Provide lateral stability and reduce falls risk
- ✓ Support patient transfer and ingress/egress
- ✓ Assist primary care, provides caregivers a firm edge for support for repositioning
- ✓ Protects patient from edge of bed surface

# Icon I3 Triple Layer Medium Risk Pressure Care Mattress



**SHEAR & FRICTION:**



**REPOSITIONING:**



**INFECTION CONTROL:**



**FIRMNESS::**



**MOISTURE & MICROCLIMATE:**



**PERFORMANCE & LONGEVITY:**



**MOBILITY & FUNCTION:**



**PRESSURE CARE RATING:**

**LOW-MEDIUM RISK**

## / Icon I3

CODE	DIMENSIONS (MM)	SIZE
I3S1000	1980x880x150	Single
I3SL1000	2030x880x150	Single, Long
I3KS1000	1980x1050x150	King Single
I3KSL1000	2030x1050x150	King Single, Long
I3EW1000	1980x1150x150	Extra-Wide
I3EWL1000	2030x1150x150	Extra Wide, Long
I3D1000	1980x1350x150	Double
I3DL1000	2030x1350x150	Double, Long
I3Q1000	1980x1530x150	Queen
I3QL1000	2030x1530x150	Queen, Long
I3K1000	1980x1850x150	King
I3KL1000	2030x1850x150	King, Long
	Customisable	CAN BE MADE TO SUIT ANY BED
<b>THERAPEUTIC WEIGHT RANGE*</b>	40-150KG	
<b>APPLICATIONS</b>	✔ HOSPITAL WARDS ✔ AGED CARE ✔ PALLIATIVE CARE ✔ HOME CARE	
<b>WARRANTY</b>	3-YEAR FOAM CORE WARRANTY 2-YEAR COVER WARRANTY	
<b>STANDARD COVER TYPE</b>	ADVANTIFLEX CLASSIC	

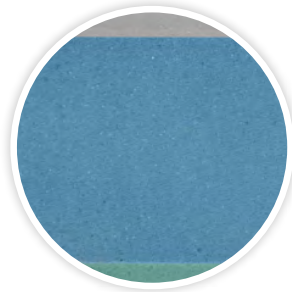
# Features

---



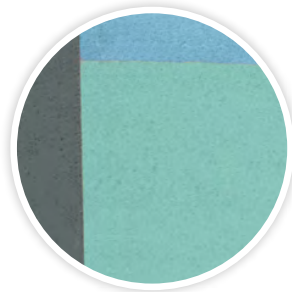
## AIROFORM MEMORY IMMERSION INTERFACE LAYER

- ✓ High Temperature Stability to deliver consistent immersion, performance and comfort
- ✓ Maximises Patient contact with Support Surfaces Providing Pressure Redistribution
- ✓ Alleviates localised pressure points
- ✓ Depth calibrated to maximise functionality and patient mobility
- ✓ Visco-elastic/Memory Foam cell structure provides low-shear surface
- ✓ Firmness: Soft



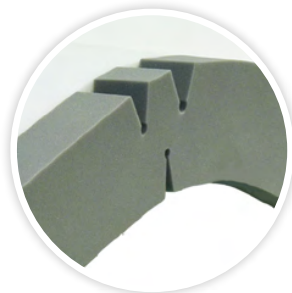
## DELUXE GRADE MID-LAYER

- ✓ Open cell high quality foam
- ✓ Provides exceptional comfort and postural support for repositioning and patient care



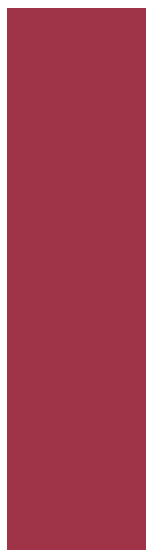
## FIRM FOUNDATION LAYER

- ✓ Provides protection against 'bottoming-out' during transfer, repositioning and whilst in the inclined/fowler position
- ✓ Provides exceptional comfort, support for repositioning and patient care



## HINGED STRENGTHENED SIDES

- ✓ Increase lateral stability of support surface
- ✓ Improves patient safety and encourages central patient positioning
- ✓ Make patient transfers easier
- ✓ Unique hinge profile reduces foam fatigue and allow mattress to easily conform to varied bed positions
- ✓ Enables ease of primary patient care



# Luxury Quilted Cotton Cover

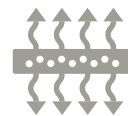
Open weave, breathable pressure care cover which looks and feels comparable to a luxury conventional residential mattress. 4-Way Stretch, anti-shearing, conforming open weave fabric compliments the multi-tiered foam structure offering pressure redistribution, immersion and envelopment. High breathability aids in microclimate control - encouraging air circulation which promotes health microclimate conditions at the skin interface and provides comfort especially to hot sleepers.



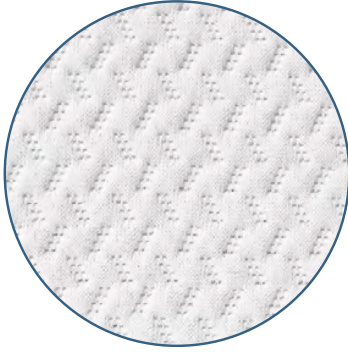
High durability



Excellent stretch



Breathable/  
vapour permeable



#### **LUXURY QUILTED QC1000 MATERIAL**

- ✓ Excellent breathability - open weave structure allows cooler sleep and reduces heat related sweating & discomfort
- ✓ 4-Way stretch preventing hammocking and stretching beneath bony regions
- ✓ Anatomically contouring - complements immersion, envelopment and pressure distribution within mattress
- ✓ Anti-Shearing and Anti-Friction for protection of vulnerable skin
- ✓ High Quality, Luxury Comfort
- ✓ Standard Colour: Textured White

#### **CLEANING AND CARE**

- ✓ Removable
- ✓ Spot Clean

#### **COMPLIANCE**

- ✓ Not suitable for incontinent patients
- ✓ Material manufactured in Australia
- ✓ High Quality materials and construction

#### **CONSTRUCTION**

- ✓ 180° / two-sided integrated zipper

#### **INTEGRATED ZIPPER**

- ✓ 180° / Two-Sided Zipper
- ✓ Allows easy cover removal
- ✓ Robust and durable

# Advantiflex Pressure Care Covers

## Advantiflex Pressure Care Cover



### ADVANTIFLEX PU1100 POLYURETHANE PRESSURE CARE MATERIAL

- ✓ High Performance, Single Sided Polyurethane
- ✓ 4-Way/Bi-Directional stretch for shear protection, immersion & envelopment
- ✓ Vapour permeable and breathable
- ✓ Resistant to patient body fluids
- ✓ Flexible and gentle to the skin
- ✓ Standard Colour: Blue

### CLEANING AND CARE

- ✓ 1,000ppm disinfection chemical suitability
- ✓ Wipe clean
- ✓ Stain Resistant
- ✓ Anti-microbial protected



### COMPLIANCE

- ✓ Fire retardant, meets BS 6807 ignition source 5 and BS 7175 ignition source 5 standards
- ✓ Anti-microbial protected
- ✓ All seams high frequency welded, no exposed sewn seams
- ✓ Meets and Exceeds Facility Requirement
- ✓ Materials manufactured in Belgium, to Forté specification

### CONSTRUCTION

- ✓ All seams high frequency sealed & welded
- ✓ 180° / two-sided integrated zipper
- ✓ Waterfall Fluid Penetration Flap
- ✓ TGA Compliant Product Labelling

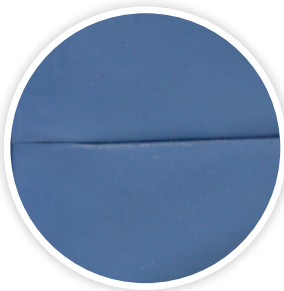


### INTEGRATED ZIPPER

- ✓ 180° / Two-Sided Zipper
- ✓ Allows easy cover removal
- ✓ Robust and durable
- ✓ High frequency welded attachment for optimal protection against fluid ingress

### WATERFALL ZIPPER PROTECTION FLAP

- ✓ Protects additional protection against fluid ingress through zipper
- ✓ Meets infection control guidelines



### HIGH FREQUENCY SEALED AND WELDED SEAMS

- ✓ Electromagnetically fused seams protecting against risk of penetration of fluid
- ✓ Meets and exceeds infection control requirements
- ✓ Reinforced with additional heavy duty stitching at stress points
- ✓ 100% Sealed to prevent ingress of fluid or infection



# Advantiflex Classic Pressure Care Cover



## ADVANTIFLEX PU1100 POLYURETHANE PRESSURE CARE UPPER MATERIAL

- ✓ High Performance, Single Sided Polyurethane
- ✓ 4-Way/Bi-Directional stretch for shear protection, immersion & envelopment
- ✓ Vapour permeable and breathable
- ✓ Resistant to patient body fluids
- ✓ Flexible and gentle to the skin
- ✓ Standard Colour: Blue



## HEAVY DUTY PVC1100 BASE MATERIAL

- ✓ 100% Waterproof
- ✓ Heavy Duty, Robust & Hardwearing
- ✓ Protects foam core against the bed base
- ✓ Provides exceptional conformity and profiling to medical bed surfaces
- ✓ Reduces shearing forces by sliding against bed base as the bed base profiles
- ✓ Superior resistance to cleaning agents
- ✓ Standard Colour: Grey

## CLEANING AND CARE

- ✓ 1,000ppm disinfection chemical suitability
- ✓ Wipe clean
- ✓ Stain Resistant
- ✓ Anti-microbial protected



## COMPLIANCE

- ✓ Fire retardant, meets BS 6807 ignition source 5 and BS 7175 ignition source 5 standards
- ✓ Anti-microbial protected
- ✓ All seams high frequency welded, no exposed sewn seams
- ✓ Meets and Exceeds Facility Requirement
- ✓ Materials manufactured in Belgium, to Forté specification

## CONSTRUCTION

- ✓ All seams high frequency sealed & welded
- ✓ 180° / two-sided integrated zipper
- ✓ Waterfall Fluid Penetration Flap
- ✓ TGA Compliant Product Labelling

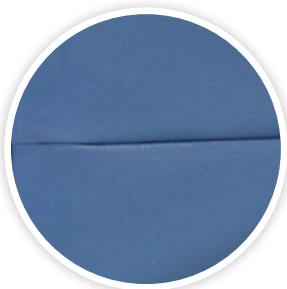


## INTEGRATED ZIPPER

- ✓ 180° / Two-Sided Zipper
- ✓ Allows easy cover removal
- ✓ Robust and durable
- ✓ High frequency welded attachment for optimal protection against fluid ingress

## WATERFALL ZIPPER PROTECTION FLAP

- ✓ Provides additional protection against fluid ingress through zipper
- ✓ Meets infection control guidelines



## HIGH FREQUENCY SEALED AND WELDED SEAMS

- ✓ Electromagnetically fused seams protecting against risk of penetration of fluid
- ✓ Meets and exceeds infection control requirements
- ✓ Reinforced with additional heavy duty stitching at stress points
- ✓ 100% Sealed to prevent ingress of fluid or infection