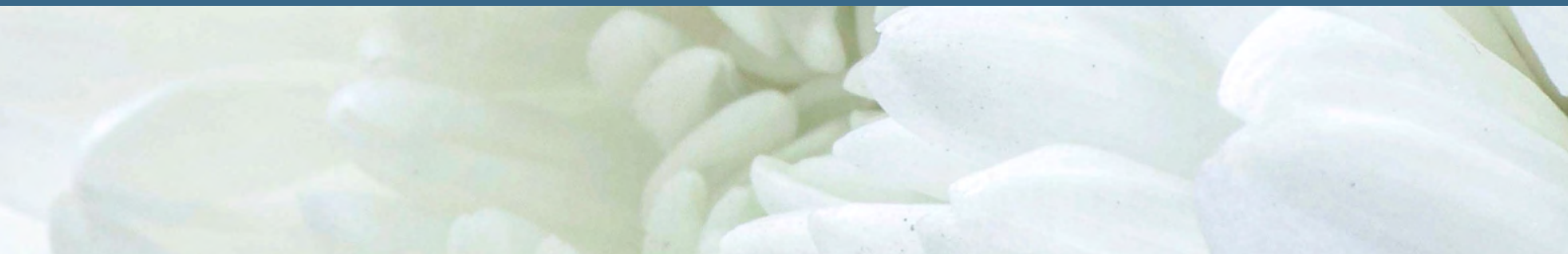




**forté**

Ultra Heavy Duty PVC1160  
Cover



# Ultra Heavy Duty PVC1160 Cover

Proven and tested to withstand the demanding environments & challenging behaviour, The Ultra Heavy Duty PVC cover is the most durable cover available. It is manufactured using a combination of construction methods (double welding and reinforced seams) and the highly sophisticated PVC1160 material. Meeting all infection control and mental health standards, the Ultra Heavy Duty Cover is suitable for mental health wards, care homes, and detention centres. This cover is designed as a damage resistant cover and does not offer pressure care.





#### **ULTRA HEAVY DUTY PVC1160 MATERIAL**

- ✓ 100% Waterproof, Water Repellent
- ✓ Extra Heavy Duty, Robust & Hardwearing
- ✓ Protects foam
- ✓ Superior resistance to cleaning agents
- ✓ Standard Colour: White

#### **CLEANING AND CARE**

- ✓ 10,000ppm disinfection chemical suitability
- ✓ Wipe clean
- ✓ Stain Resistant
- ✓ Anti-microbial protected



#### **COMPLIANCE**

- ✓ Fire retardant, meets BS 6807 ignition source 5 and BS 7175 ignition source 5 standards BS 7837, California T 19, DIN 4102: B1, CAN ULC S109, EN 13501-1: B-s2-d0, D.M. 26.06.84 (UNI 9177): CL. 2
- ✓ Anti-microbial protected
- ✓ All seams high frequency welded, no exposed sewn seams
- ✓ Meets and Exceeds Facility Requirement
- ✓ Material manufactured in Germany, to Forté specification

#### **CONSTRUCTION**

- ✓ All seams double high frequency sealed & welded and reinforced internally with stitching
- ✓ 180° / two-sided integrated zipper
- ✓ Waterfall Fluid Penetration Flap
- ✓ TGA Compliant Product Labelling

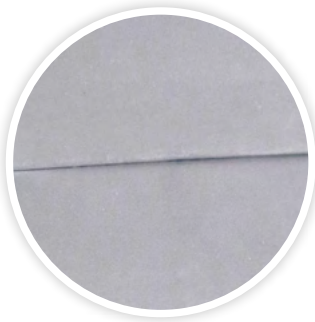


#### **INTEGRATED ZIPPER**

- ✓ 180° / Two-Sided Zipper
- ✓ Allows easy cover removal
- ✓ Robust and durable
- ✓ High frequency welded attachment for optimal protection against fluid ingress

#### **WATERFALL ZIPPER PROTECTION FLAP**

- ✓ Provides additional protection against fluid ingress through zipper
- ✓ Meets infection control guidelines



#### **HIGH FREQUENCY SEALED AND WELDED SEAMS**

- ✓ Electromagnetically fused seams protecting against risk of penetration of fluid
- ✓ Meets and exceeds infection control requirements
- ✓ Reinforced with additional heavy duty stitching at stress points
- ✓ 100% Sealed to prevent ingress of fluid or infection

# Options

## FULLY SEALED & ENCLOSED

- ✓ No-Zipper
- ✓ All seams welded and 100% waterproof to prevent ingress of fluid and infection (high frequency sealed and welded seams)
- ✓ Ultimate core durability and protection,
- ✓ Used for mental health - protects foam core against willful damage
- ✓ Used in high risk infection control applications
- ✓ Usually manufactured with an integrated pressure relief system

## CARRY HANDLES

- ✓ Fits to side of Mattress Cover for easy access whilst Mattress is on the bed
- ✓ Internal Reinforcement for Longevity
- ✓ Close Mount Design Significantly Reduces Risk of Getting Caught on Other Patient Care Equipment
- ✓ Fully Sealed Non-Absorbent and Wipe-Clean for Infection Control
- ✓ Very Strong and Flexible for Performance and Durability



## CUSTOM PRINTING

- ✓ Print ward location, facility name, asset number or any other details to track and control where your mattress gets used
- ✓ Audit register
- ✓ Print additional care information specific to your facility
- ✓ Custom branding available
- ✓ Full colour, indelible, digital system providing excellent flexibility and versatility



## EVACUATION SYSTEMS

- ✓ fully Integrated / Built-in Forté Premium Assure Evacuation System
- ✓ standard Forté evacuation system accessory
- ✓ Contact Forté directly for further details

## CUSTOM ZIPPER

- ✓ up to 360° / Four-Sided Zipper
- ✓ Allows easy cover removal
- ✓ Robust and durable
- ✓ High frequency welded attachment for optimal protection against fluid ingress
- ✓ Other custom zippers available - contact Forté and provide them with the details of what you require. i.e. water resistant, invisible.

# FORTÉ ULTRA HEAVY DUTY PVC1160 FABRIC TECHNICAL INFORMATION

## Typical Applications

Inpatient Mental Health  
Psychiatric  
Group Homes  
Highly incontinent

## Features & Benefits

Excellent HF Welding Compatibility	Allows covers to be sealed against fluid ingress at seams & challenging willful damage
100% Waterproof, Water Repellent	Allows care staff to 'Wipe-Clean', effective barrier against fluid ingress. Protects foam core.
Fire Retardant	Meets hospital and medical facility requirements.
Excellent Flexibility and Cracking Resistance	Greater durability and increased infection control
Sophisticated polyvinylidene fluoride coating.	High Resistance to Cleaning Agents (up to 10000ppm Active Chlorine resistance) Provides outstanding cleaning properties and highest available infection control



Resistance to cleaning agents



High durability



Waterproof



Fire retardant



Excellent HF welding capacity



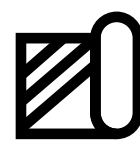
Anti-Static



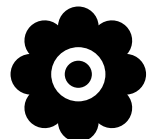
Anti-Microbial protection



Anti-Bacterial



Barrier Fabric



Hypoallergenic

Property	Result	Test Method
Composition	PVC with Multi-composed PVDF-lacquer system on both sides, Titaniumdioxide (TiO <sub>2</sub> ) front side primer, antimicrobial, UV-protected finish	
Weight	±1050 g/m <sup>2</sup> (±5%)	EN ISO 2286-2
Width	240cm	
Tensile strength warp/weft (N/50 mm)	6000 / 5500	EN ISO 1421/V1
Tear strength warp/weft (N)	900 / 800	DIN 53363
Roll Length	100m	
HF Weldable	Yes	
Microbial	Bacteria & Mite Resistant	New York State 63 Test
Adhesion (N/50mm)	25	PA 09.03 (intern)
Cold resistance (°C)	-60	EN 1876-1
High Temperature (°C)	+70	PA 07.04 (intern)
Light fastness (Note, Value)	>6	EN ISO 105 B02
Crack resistance	100000 x (no cracks)	DIN 53359 A
Material	PES	DIN EN ISO 2076
Yarn count (dtex)	1670	DIN EN ISO 2060
Weave	P 2/2	
Fire Standard	PASS	AS1441.13-1973 / BS6807 Crib 5
Burning behaviour		BS 7837, California T 19, DIN 4102: B1, CAN ULC S109, EN 13501-1: B-s2-d0, D.M. 26.06.84 (UNI 9177): CL. 2 (always check validity of fire certificate, also check country-specific validity). Low-wick for base fabric.
Cleaning & Care:	Machine Washable 40°C Do not bleach Do not tumble dry Do not dry clean Do not Iron	