



forté  
HEALTHCARE



# SOVEREIGN ROHO<sup>®</sup> MATTRESS

Pressure Care Modular Air Mattress

# SOVEREIGN ROHO®

## Pressure Care Modular Air Mattress

---

The Sovereign High Care mattress with integrated ROHO® DRY FLOATATION® Technology provides trusted and proven care for high to very high-risk clients requiring a static support surface that balances immersion, breathability, postural support, superior comfort, and outstanding performance.

Whether for specific pain management, palliative care ward usage or a complex client in home care, you can adapt the Sovereign ROHO® Modular Air Mattress to any configuration you require. Deep immersion is achieved without compromising mobility with a unique engineered responsive foam called Airoform Response.

High-performance foams used in the construction of the mattress, combined with the Premiflex Ultra Premium Breathe Pressure Care cover ensures ultimate longevity and consistency of care.





# CORE FEATURES



## AIROFORM MEMORY BREATHE IMMERSION INTERFACE LAYER

- » High-Temperature stability to deliver consistent immersion, performance and comfort
  - » Maximises patient contact with the support surface, providing pressure redistribution
  - » Alleviates localised pressure points
  - » Depth calibrated to maximise functionality and patient mobility
  - » Prevents collapse, tearing and side-ways twisting of the second layer to ensure the patient receives full immersion benefit
  - » Unique Airoform Breathe ventilation system minimises heat entrapment and enhances core circulation providing a cooler sleep surface
  - » Visco-elastic/Memory Foam cell structure provides a low-shear surface
- Firmness: Soft



## HIGH-PERFORMANCE, 4 ZONED IMMERSION REGION

- » 4-Zones of lateral and longitudinal castellations within the immersion region cradle the patient and conform to the bony prominences
- » Dual-zoned depth provides postural support
- » Open-cell foams freely distribute air and enhance circulation
- » Provides reduction of shearing forces at the patient interface
- » Ultra-High Performance Foam instantly responds to patient movement and repositioning for ease of primary care



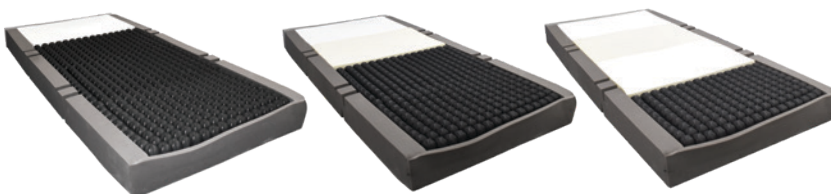
## DRY FLOTATION® TECHNOLOGY

- » The ROHO® DRY FLOTATION® creates an environment supporting protection and healing with the ORIGINAL non-powered, air-filled, adjustable, zoned, reactive mattress sections
- » Comprised of soft, interconnected air cells, the DRY FLOTATION mattress sections are designed to conform to the body's contours, helping soft tissue maintain its shape in order to benefit the healing process
- » Each section can be independently adjusted, providing a low-pressure environment over multiple contact areas of the body
- » Non-powered; ideal for home care applications where there is a risk of power failure



## ROHO® INTERNAL PLACEMENT

- » ROHO® valve extensions to allow pressure to be adjusted without opening cover resulting in minimising infection risk
- » Minimises risk of unauthorised pressure adjustment and /or unintentional tampering with settings
- » Facilitates efficient cleaning without the need to remove sections

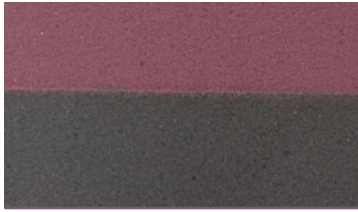


## ROHO® POSITIONING

- » Available with 1 – 4 ROHO® mattress sections
- » Mattress supplied with Sovereign style foam inserts to replace ROHO® sections

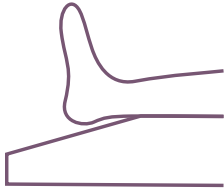
# CORE FEATURES

---



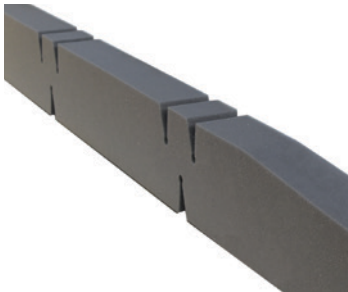
## PREMIUM FIRM FOUNDATION LAYER

- » Provides protection against 'bottoming-out' during transfer, repositioning and whilst in the inclined/fowler position
  - » Provides exceptional comfort, support for repositioning and patient care
- 



## SLOPED HEEL PRESSURE TRANSFER ZONE

- » Enhances pressure relief and protection for critical at-risk heel region
  - » Offloads pressure from the patients' heels and transfers it to the calf area
  - » Unobtrusive as does not require any adjustment
- 



## HINGED STRENGTHENED SIDES

- » Increase lateral stability of support surface
  - » Improves patient safety and encourages central patient positioning
  - » Make patient transfers easier
  - » Unique hinge profile reduces foam fatigue and allows the mattress to easily conform to varied bed positions
  - » Enables ease of primary patient care
- 



# COVER FEATURES

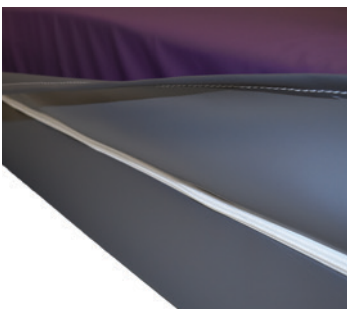
---

## PREMIFLEX ULTRA PREMIUM BREATHE PRESSURE CARE COVER WITH ROHO® VALVE ACCESS



### PREMIFLEX PREMIUM PFPU1100 POLYURETHANE PRESSURE CARE UPPER MATERIAL

- » High Performance, Single-Sided Polyurethane
- » 4-Way/Bi-Directional stretch for shear protection, immersion and envelopment
- » Vapour permeable and breathable
- » Resistant to patient body fluids
- » Flexible and gentle to the skin
- » Superior resistance to cleaning agents
- » Standard Colour: Purple/Grape



### DOUBLE COATED POLYURETHANE BASE

- » Durable
- » Protects foam core against the bed base
- » Provides exceptional conformity and profiling to medical bed surfaces
- » Superior resistance to cleaning agents
- » Standard Colour: Deep Grey



### CLEANING AND CARE

- » 10,000ppm disinfection chemical suitability
- » Wipe clean
- » Stain Resistant
- » Anti-microbial protected

# COVER FEATURES

---



## COMPLIANCE

- » Fire retardant, meets BS 6807 ignition source 5 and BS 7175 ignition source 5 standards
  - » Anti-microbial protected
  - » All seams high frequency welded, no exposed sewn seams
  - » Meets and exceeds facility requirements
  - » Material manufactured in Belgium, to Forté specification
- 



## FULL VAPOUR PERMEABILITY

- » Allows vapour to travel right through the cover at a controlled rate
  - » Reduces risk of internal infection entrapment and optimises core micro-climate
- 



## CONSTRUCTION

- » All seams high frequency sealed and welded
  - » 180° / two-sided integrated zipper
  - » Waterfall Fluid Penetration Flap
  - » TGA Compliant Product Labelling
- 



## ROHO® Valve Extension Pockets

- » Easy adjustment to ROHO® pressure
  - » Access to ROHO® valves without un-zipping cover
  - » Ultimate infection control
- 



## WATERFALL ZIPPER PROTECTION FLAP

- » Provides additional protection against fluid ingress through the zipper
  - » Meets infection control guidelines
-



# SPECIFICATIONS



Code	Dimensions (LxWxDmm)	Size
SRS1000	1980x880x150	Single
SRS1000-R1 (1 x ROHO section)	1980x880x150	Single
SRS1000-R2 (2 x ROHO sections)	1980x880x150	Single
SRS1000-R3 (3 x ROHO sections)	1980x880x150	Single
SRS1000-R3 (3 x ROHO sections)	1980x880x150	Single
SRKS1000	1980x1050x150	King Single
SRKS1000-R1 (1 x ROHO section)	1980x1050x150	King Single
SRKS1000-R2 (2 x ROHO sections)	1980x1050x150	King Single
SRKS1000-R3 (3 x ROHO sections)	1980x1050x150	King Single
SRKS1000-R4 (4 x ROHO sections)	1980x1050x150	King Single
Cover		Warranty
Premiflex Ultra		» 5 Year Foam » 4 Year Cover » 2 Year ROHO®
Therapeutic Weight Range		
No Weight Limit (with ROHO®)   25-275kg (without ROHO®)		
Applications		
» Hospital Wards » Aged Care » Palliative Care » Homecare		



GLOBAL TECHNOLOGY  
AUSTRALIAN MADE

All mattresses are made by  
Forté Healthcare in Armidale  
NSW in accordance with all  
Australian manufacturing  
and clinical standards.

